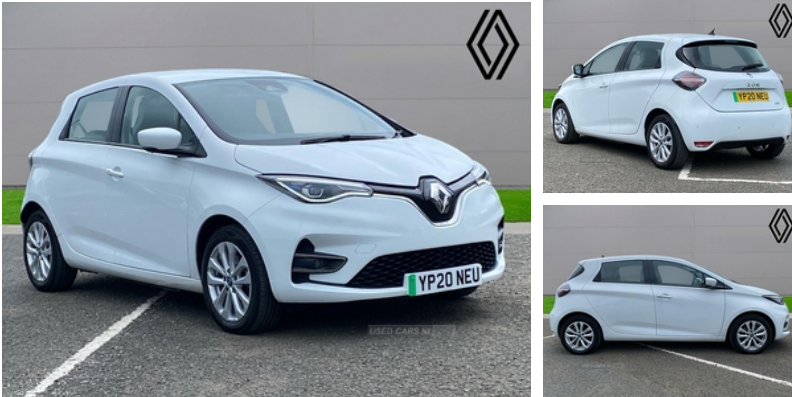


## Renault Zoe 100Kw I Iconic R135 50Kwh Rapid Charge 5Dr Auto | Jun 2020

# £9,899

245 MILE RANGE



The 2020 Renault Zoe Iconic stands out as a beacon in the electric vehicle (EV) market, offering a harmonious blend of style, practicality, and cutting-edge technology. Renault has refined the Zoe over several years, and the 2020 model epitomizes the brand's commitment to electric mobility, making it an attractive option for both urban commuters and eco-conscious drivers.

**Design and Exterior** The Renault Zoe Iconic features a sleek and modern design that exudes a youthful charm. Its compact hatchback silhouette is accentuated by smooth lines and a bold front fascia. The front end is distinguished by the signature Renault logo, set against a striking black background, flanked by LED headlights that provide excellent visibility and a contemporary look. The aerodynamic design not only enhances the Zoe's aesthetic appeal but also contributes to its impressive range. The Iconic trim adds unique touches, enhancing the car's visual appeal and making it stand out in a crowded urban environment.

**Interior and Comfort** Inside, the Zoe Iconic offers a surprisingly spacious cabin given its compact exterior dimensions. The interior is crafted with high-quality materials and a focus on sustainability, featuring recycled fabrics that align with its eco-friendly ethos. The seats are ergonomically designed, providing ample support and comfort for longer journeys. The dashboard is dominated by a 7-inch touchscreen infotainment system that integrates seamlessly with Renault's Easy Link system, offering navigation, smartphone connectivity, and a host of other features. The digital instrument cluster behind the steering wheel provides clear and customizable displays of driving information, including battery status and range.

**Performance and Efficiency** Under the

<b>Miles:</b>	29553
<b>Fuel Type:</b>	Electric
<b>Transmission:</b>	Automatic
<b>Colour:</b>	White
<b>Tax Band:</b>	Electric (£0 p/a)
<b>Body Style:</b>	Hatchback
<b>Insurance group:</b>	22A
<b>Reg:</b>	YP20NEU

### Technical Specs

#### DIMENSIONS

<b>Length:</b>	4087mm
<b>Width:</b>	1787mm
<b>Height:</b>	1562mm
<b>Seats:</b>	5
<b>Luggage Capacity (Seats Up):</b>	338L
<b>Gross Weight:</b>	1988KG
<b>Max. Loading Weight:</b>	486KG

#### PERFORMANCE & ECONOMY

##### Fuel Consum. (Urban Cold):

Not AvailableMPG

##### Fuel Consum. (Extra Urban):

Not AvailableMPG

##### Fuel Consum. (Combined):

Not AvailableMPG

##### Fuel Tank Capacity:

Not AvailableL

<b>Number Of Gears:</b>	1 SPEED
<b>Top Speed:</b>	87MPH
<b>Acceleration 0-100 km/h:</b>	9.5s

hood, the 2020 Renault Zoe Iconic is powered by an electric motor that delivers a robust 110 horsepower. This motor enables the Zoe to accelerate briskly and handle urban traffic with ease. Its top speed is modest, around 87 mph (140 km/h), which is more than adequate for most driving situations. One of the standout features of the Zoe is its impressive electric range. The 52 kWh battery pack offers up to 245 miles (395 km) on a single charge under the WLTP cycle, making it one of the leaders in its class. This range is more than sufficient for daily commuting and even longer trips, reducing the frequency of charging stops.

**Charging and Technology** The Zoe Iconic supports both AC charging, providing flexibility for various charging scenarios. With a 22 kW AC charger, the Zoe can be fully charged in just over 3 hours. Technology is at the forefront of the Zoe's appeal. The car comes equipped with a range of advanced driver assistance systems, including adaptive cruise control, lane departure warning, and automated emergency braking. These features enhance safety and provide a more relaxed driving experience.

**Conclusion** The 2020 Renault Zoe Iconic is a testament to how far electric vehicles have come in

<b>Engine Power BHP:</b>	134.1BHP
--------------------------	----------

## Vehicle Features

2 coat hooks, 2 USB sockets in rear, 3 point rear seatbelts x3, 3 rear head restraints, 6 speakers, 10" TFT Driver information display, 12V socket in lower dashboard, 16" alloy wheels with Michelin tyres, Air Conditioning, Anti-lock braking system (ABS), Automatic air conditioning, Automatic hazard lights activation under emergency braking, Automatic headlights + automatic windscreen wipers, Automatic high/low beam, Automatic parking brake, Automatic rain sensing wipers, Battery charge indicator, Bluetooth Connection, Bluetooth Music Streaming, Body colour bumpers, Body colour door mirrors, Body colour front door handles, Chameleon charger AC 2-22kW, Charging cable (Type 2), Child locks on rear doors, Cruise control + speed limiter, Cruise control switches on steering wheel, Diamond cut alloys, Driver/Front Passenger airbags, Driver/passenger sunvisors and vanity mirrors, Driver one touch and passenger electric windows, Drivers seat with longitudinal adjustment and recline, Driving style indicator, Eco mode, Econometer, Electrically operated heated and folding mirrors, Electric power steering, Electric rear windows, Electronic engine immobiliser, ESP + ASR traction control + CSV understeer control, Fabric upholstery (recycled), Front charging socket, Front door storage bins with bottle holder, Front Fog Lamps, Front fog lights, Front head restraints, Front passenger airbag deactivation, Full LED headlamps with C-shape daytime running lights, Gear shift indicator, Glovebox, Hands free Renault card, Heated rear windscreen, Height/reach adjust steering wheel, Height adjustable front seatbelts, Hill start assist,

ISOFIX on front passenger and rear outer seats, Keyless Entry, Keyless Start, Lane Departure Warning System, Lane departure warning system (LDW), Lane keeping assistant (LKA), LED Headlights, Parking Sensors, PET soft touch steering wheel, RAID (Renault Anti-Intruder Device), Rain sensor wipers, Range indicator, Range optimizer, Rear disc brakes, Remote central locking, Satellite Navigation, Seatbelt pretensioners with load limiters, Seatbelt warning, Slow speed pedestrian warning, Smartphone integration compatible with Apple CarPlay and Android Auto, Soft armrests in door panels, Split folding rear seats, Steering wheel mounted controls, Stowage pocket in front passenger seat back, Tinted Glass, Touch screen display, Traffic sign recognition (TSR), Twin front cupholders, Tyre pressure monitor, Tyre repair kit, USB Connection