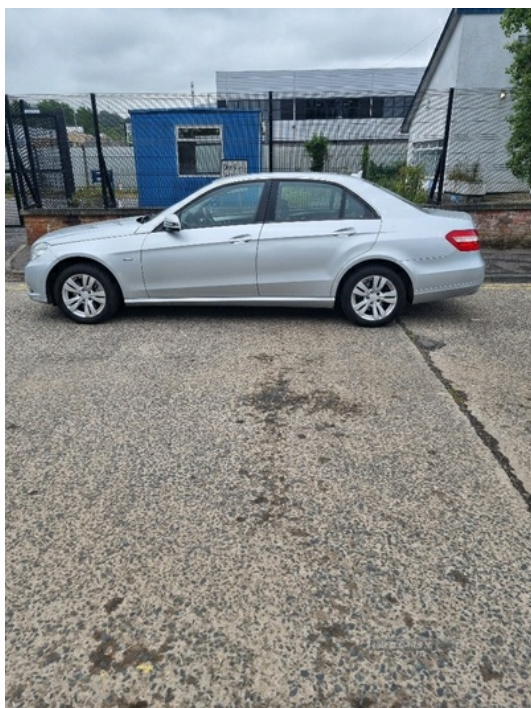


140 orangefield crescent belfast, Belfast, BT6 9GJ
07710 377050

Mercedes E-Class E250 CDI BlueEFFICIENCY SE 4dr Tip Auto [7] | Jul 2011

NEW ENGINE 74, 000 MILES TELE. 0771 0377050

£2,750



New engine fitted with 74,000 miles on it fitted by mercedes garage can be verified also automatic gearbox serviced front and rear disc's and pads fitted car was fully checked for MOT passed MOT 18th April 2024 car looks and drives well any test welcome telephone 0771 0377050

Vehicle Features

ABS with Brake Assist, Active bonnet, Adaptive brake system, Adaptive driver and front passenger airbags, Adjustable rear head restraints, Alarm system/interior protection/immobiliser, Artico man-made leather upholstery, Attention assist, Auto Mercedes-Benz child seat recognition sensor, Auxiliary input socket in glovebox, Bag hook in luggage compartment, Body colour bumpers, Body colour door handles, Boot release from drivers seat, Bottle holders, Comfort suspension, Daytime running lights, Diesel particulate filter, Door mirror integrated indicators, Door sill panels with stainless steel inlays, Drivers knee airbag, Elec heated + adjust door mirrors, Electric front/rear windows with one touch/anti pinch, ESP with ASR, External temperature gauge, Front and rear curtain airbags, Front and rear door pockets, Front and rear parking sensors, Front centre armrest with storage compartment, Front

Miles:	210000
Fuel Type:	Diesel
Transmission:	Automatic/Other
Colour:	Silver
Engine Size:	2143
CO2 Emission:	129
Tax Band:	D (£160 p/a)
Body Style:	Saloon
Reg:	LO11RYR

Technical Specs

DIMENSIONS	
Length:	4868mm
Width:	1854mm
Height:	1470mm
Seats:	5

Luggage Capacity (Seats Up):	540L
Gross Weight:	2280KG
Max. Loading Weight:	545KG

PERFORMANCE & ECONOMY	
Fuel Consum. (Urban Cold):	45.6MPG
Fuel Consum. (Extra Urban):	67.3MPG
Fuel Consum. (Combined):	57.6MPG
Fuel Tank Capacity:	59L
Number Of Gears:	7 SPEED
Top Speed:	150MPH
Acceleration 0-100 km/h:	7.5s
Engine Power BHP:	201.2BHP

cupholder, Front fog lights, Front head restraints, Front seat back map pockets, Front side airbags, Grey radiator grille, Heated front seats, Heated windscreen wash system, Height/reach adjust steering wheel, Interior rear light/integral reading lights, Isofix rear child seat fastenings, Leather gearshift, Leather trimmed steering wheel, LED tail lights, Lockable glovebox, Locking wheel bolts, Multi function steering wheel, On board computer, Parktronic system, PAS, Pre-Safe anticipatory safety system, Rain sensor windscreen wipers, Rear armrest with storage + cupholders, Remote central locking, Seatbelt warning, Service indicator (ASSYST PLUS), Steel space saver spare wheel, Sunvisors with illuminated vanity mirrors, Warning triangle and first aid kit