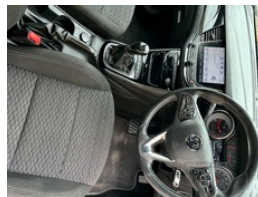


39a lettergeshRoad, Dromore, BT78 3LU
07541253631

Vauxhall Astra 1.6 CDTi 16V 136 SRi Nav 5dr | Feb 2017

£4,750 O.N.O



Vauxhall Astra 1.6 CDTi SRi
5 Door. Service History, Full Electrics, DAB Radio / Aux, Air Conditioning, Cruise Control, Front Fogs, Daytime Running Lights, Alloys, 6 speed. Mot to October 24.

102,105 miles

£20 tax

Vehicle Features

3 spoke leather covered steering wheel, 3x3 point rear seatbelts,

| | |
|----------------------|-------------|
| Miles: | 102150 |
| Fuel Type: | Diesel |
| Transmission: | Manual |
| Colour: | White |
| Engine Size: | 1598 |
| CO2 Emission: | 103 |
| Tax Band: | B (£20 p/a) |
| Body Style: | Hatchback |
| Reg: | Ko66kfn |

Technical Specs

| DIMENSIONS | |
|-------------------------------------|--------|
| Length: | 4370mm |
| Width: | 1809mm |
| Height: | 1485mm |
| Seats: | 5 |
| Luggage Capacity (Seats Up): | 370L |
| Gross Weight: | 1875KG |
| Max. Loading Weight: | 600KG |

| PERFORMANCE & ECONOMY | |
|------------------------------------|----------|
| Fuel Consum. (Urban Cold): | 61.4MPG |
| Fuel Consum. (Extra Urban): | 80.7MPG |
| Fuel Consum. (Combined): | 72.4MPG |
| Fuel Tank Capacity: | 48L |
| Number Of Gears: | 6 SPEED |
| Top Speed: | 127MPH |
| Engine Power BHP: | 134.1BHP |

4 Lashing eyes in boot, 6 speakers, 12V power point front, 60/40 split rear seats, ABS, Adaptive brake lights, Adjustable front armrest, Apple car play/Android Auto, Bluetooth connectivity including audio streaming, Body colour door handles, Body coloured door mirrors, Body colour rear roof spoiler, Centre console with covered storage and cupholders, Child locks on rear doors, Chrome effect upper window trim, Chrome front grille, Chrome headlight surround, Chrome interior door handles, Cruise control + speed limiter, DAB Digital radio, Deadlock, Door to door illumination, Driver's storage box, Driver/Front Passenger airbags, Driver/passenger sunvisors, Driving assistance pack 1 - Astra, Electrically adjustable and heated door mirrors, Electric speed sensitive power steering, Electronic engine immobiliser, ESP, External temperature gauge, Formula cloth upholstery, Front/rear courtesy lights, Front and rear curtain airbags, Front and rear door pockets, Front fog lamps, Front reading lights, Front red LED ambient lighting, Front seat back storage pockets, Front seat side impact airbags, Gloss black finish B pillar, Gloss black finish C pillar, Glovebox, Hazard warning lamps, Heated rear window, Height adjustable front/rear head restraints, Hill start assist, Illuminated load area, Illuminated vanity mirrors, Intellilink Nav 900 European sat nav with 8" touch screen, Intermittent rear wash/wipe, Isofix system on outer rear seats, Leather steering wheel, LED daytime running lights, Locking wheel bolts, Low fuel level warning light, Luggage compartment cover, Mobile App interface, Multi function trip computer, One touch electric front/rear windows, Passenger airbag deactivate switch, Pedal release system, Reach + rake adjustable steering column, Remote central locking, Remote ultrasonic alarm system, Rev counter, Seatbelt pretensioners on front/outer rear seats, Service indicator, Shark fin roof aerial, Solar glass windscreen, Sports switch, Steering wheel mounted audio controls, Tinted windscreen, Trailer Stability Programme, Tyre pressure monitoring system, USB port, Vauxhall OnStar emergency assistance, Voice control system