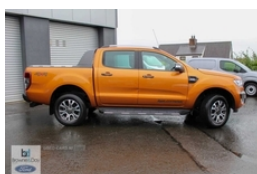




Ford Ranger Pick Up Double Cab Wildtrak 3.2 TDCi 200 Auto | Jan 2018

£15,495 + VAT



Ford Ranger Pick Up Double Cab Wildtrak 3.2 TDCi 200 Auto

Vehicle Features

2 x 12V power outlets, 3x3 point rear seatbelts, 4 speed air recirculation fan + heater, 6 speakers, 8 way adjustable and heated driver/single passenger seat with lumbar support, 18" Machined alloy wheels, ABS + EBD, Additional flip key, Aerodynamic sports bar, Aluminium finish roof rails, Ambient interior lighting, Anti-lock Braking System + EBD, Auto dimming rear view mirror, Aux input socket, Black tailgate handle, Bluetooth hands free kit with voice control, Body colour bumpers, Body colour wheel arch mouldings, C-channel loadbox tie downs, Caliber cloth/Journey grain leather upholstery, Centre console bezel with graphite finish, Centre console coolbox, Child proof rear door locks, Chrome effect scuff plates, DAB with CD and MP3 player, Daytime running lights, Door mirror mounted LED turn signals, Door operated dome light with courtesy switches on all doors, Driver and passenger airbag, Driver and passenger sunvisors with illuminated vanity mirrors, Easy fuel capless refuelling system, Electric folding door mirrors, Electric rear windows, Electric windows, Electronic air temperature control (EATC), Emergency brake assist, ESP including traction control, Fixed bench with 2 height adjustable head restraints, Front centre armrest with storage bin, Front centre console with dual cup holders and armrest with double lidded storage box, Front door storage pockets, Front fog lights, Front passenger airbag deactivation, Front passenger grab handle, Front seat back map pockets, Front seatbelt pre-

Miles:	87339
Fuel Type:	Diesel
Transmission:	Automatic
Colour:	Orange
Engine Size:	3198
Tax Band:	Light goods vehicle (£335 p/a)
Body Style:	Pickup
Reg:	XNZ5948

Technical Specs

DIMENSIONS	
Length:	5359mm
Width:	1860mm
Height:	1815mm
Seats:	5
Luggage Capacity (Seats Up):	Not AvailableL
Gross Weight:	3270KG
PERFORMANCE & ECONOMY	
Fuel Consum. (Urban Cold):	24.8MPG
Fuel Consum. (Extra Urban):	38.7MPG
Fuel Consum. (Combined):	32.1MPG
Fuel Tank Capacity:	80L
Number Of Gears:	6 SPEED
Top Speed:	109MPH
Acceleration 0-100 km/h:	10.4s

tensioners with load limiters, Graphite finish instrument panel, Headlamp levelling, Headlamp levelling, Heated front window, Heated rear cab window, High performance bedliner with protective side wall, Illuminated glovebox, Immobiliser, Interior tie down hooks and load rest, ISOFIX child seat mountings, Knee airbag, Leather gearknob, Leather wrapped steering wheel with contrast stitching, Load area light, Lockable tailgate, Locking wheel nuts, Map reading lights, Mud flaps front and rear, Multifunction colour display, one touch lowering + anti trap device (Driver only), one touch lowering + anti trap device (Driver only), Outside air temperature display with ice warning, Overhead stowage with mood lighting, Overhead sunglasses holder, PAS, Pick up box sports rail extension, Plastic side steps, Power Assisted Steering, Premium carpet mats, Privacy glass, Puddle lights in door mirrors, Rain sensitive wipers and auto headlights, Reach and rake adjustable steering column, Rear 12v plug, Rear cup holders, Rear step in bumper, Rear view camera, Remote central locking, Remote security alarm system, Reverse parking sensor, Satellite navigation system, SD card slot, Seatbelt warning indicator, Side curtain airbags, Side Thorax Airbags, Spare wheel lock, Speed sensing door locks, Steel double skinned pick up box with 2 position tailgate and inner fenders, Steering wheel mounted audio controls, SYNC 3.0 with 8" Colour touch screen, Thatcham category 1 alarm, Tie down rails and rope hooks, Titanium coloured electrically adjustable and heated door mirrors with memory, Titanium grille, Trip computer, Tyre pressure monitor, Under hood engine cover, USB connection

Engine Power BHP:	197.1BHP
--------------------------	----------