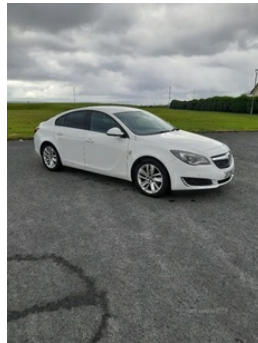
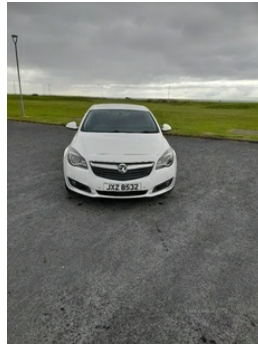


**Vauxhall Insignia 2.0 CDTi [170] ecoFLEX SRI
Nav 5dr [Start Stop] | Jan 2016
MOT JUNE 2025, FULLY SERVICED**

£4,350 O.N.O



Motd June 2025

Fully serviced at 102k with timing belt kit, rear discs,pads and calipers

Excellent condition throughout

Sat nav, sensors front and rear.

£35 per year road tax

Please phone 07872939709

Vehicle Features

3 height adjustable rear headrests, 4 way electrically adjustable lumbar support for drivers seat, 12V accessory power point in centre console, 12V power point for rear passengers, 17" 7 spoke alloy wheels, 60/40 split folding rear seat, ABS, Additional storage compartment in boot, Air recirculation system, Ambient interior lighting, Anti submarining seats, audio streaming, Automatic lighting control, Auxiliary input socket, Black grille, Bluetooth + USB, Body colour bumpers, Body colour door handles, Body colour electric adjustable heated door mirrors,

Miles:	107000
Fuel Type:	Diesel
Transmission:	Manual
Colour:	White
Engine Size:	1956
Tax Band:	C (£35 p/a)
Body Style:	Hatchback
Reg:	JXZ8532

Technical Specs

DIMENSIONS	
Length:	4842mm
Width:	1856mm
Height:	1498mm
Seats:	5
Luggage Capacity (Seats Up):	530L
Gross Weight:	2180KG
Max. Loading Weight:	642KG

PERFORMANCE & ECONOMY	
Fuel Consum. (Urban Cold):	51.4MPG
Fuel Consum. (Extra Urban):	78.5MPG
Fuel Consum. (Combined):	65.7MPG
Fuel Tank Capacity:	70L
Number Of Gears:	6 SPEED
Top Speed:	139MPH
Acceleration 0-100 km/h:	9s
Engine Power BHP:	167.6BHP

Body colour lip spoiler, Boot lashing points, Brake assist function, Centre console with armrest, Chrome inner door handles, CSC - Cornering stability control, Delay courtesy light function, DMB digital radio, Door/boot open warning light, Driver/passenger 2 stage auto adaptive airbags, Driver/passenger reading lights, Driver/passenger sunvisors with illuminated vanity mirrors, Electric front windows + drivers one touch, Electric headlight beam leveling, Electric height adjustable driver seat, Electric rear windows with anti pinch facility, Electronic parking brake, Electronic Stability Programme, Exterior temperature gauge, Follow me home headlights, Footwell illumination, Front and rear outer seat belt pre-tensioners, Front fog lights, Front lateral airbags, Front seat back map pockets, Full size curtain airbags, Fully adjustable front headrests, Heated rear windscreen, Height/reach adjust steering wheel, Height adjustable front seatbelts, Hill start assist, Illuminated boot, Illuminated glovebox, Immobiliser, Integrated fuel filler cap, IntelliLink + shark fin aerial, Interior courtesy light operated by all doors, ISOFIX on front passenger and rear outer seats, Leather gear knob, LED daytime running lights, Lidded front door storage with drinks holder + armrest, Locking wheel nuts, Lowered and uprated sports suspension, Low fuel level warning light, Navi 900 Sat Nav with DMB radio/CD/MP3 player, Oil level gauge, Parcel shelf, PAS, Passenger airbag deactivation system, Pollen filter, Rear courtesy lights, Rear door pockets with bottle holders, Rear passenger heating ducts, Rear wiper, Reclining front seats, Remote central deadlocking, Remote security alarm system, Rev counter, SD card slot, Seatbelt reminder for driver and front passenger, Single exhaust tailpipe, Steering wheel mounted audio controls, Three 3 point rear seatbelts, Tinted glass including windscreen, Traction control, Trigo cool inserts on facia and doors, Trip computer, Tyre pressure monitoring system