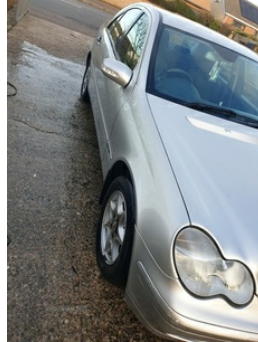


Mercedes C-Class C220 CDI Classic SE 4dr Auto | May 2004

£2,750 O.N.O



Brilliant car only selling has need bigger car comes with 7 months mot

Vehicle Features

3 rear three-point seat belts/head restraints, ABS with Brake Assist, adjustable with storage, Airbags - windowbags, Alarm system/interior protection/immobiliser, Auto Mercedes-Benz child seat recognition sensor, Body colour bumpers, Driver/Front Passenger airbags, Electrically heated + operated door mirrors, ESP with ASR, Eucalyptus wood trim, Front and rear electric windows, Front and rear outer seat belt pre-tensioners, Front centre armrest, Front fog lights, Front head restraints, Front side airbags, Headlamp assist, Heating with dust filter+air recirculation switch, High level third brake light, Leather trim steering wheel and gearshift in anthracite, Locking wheel bolts, Multi function steering wheel + trip computer, Outside temperature gauge, Rear centre armrest, Rear cupholders, Remote boot release, Remote central locking, Service interval indicator, Steel space saver spare wheel, Tinted glass, Tipfunction and Speedtronic cruise control

Miles:	70000
Fuel Type:	Diesel
Transmission:	Automatic/Other
Colour:	Silver
Engine Size:	2148
CO2 Emission:	166
Tax Band:	H (£305 p/a)
Body Style:	Saloon
Insurance group:	31A
Reg:	Yil4696

Technical Specs

DIMENSIONS

Length:	4526mm
Width:	1728mm
Height:	1426mm
Seats:	5
Gross Weight:	1985KG

PERFORMANCE & ECONOMY

Fuel Consum. (Urban Cold):	32.5MPG
Fuel Consum. (Extra Urban):	57.6MPG
Fuel Consum. (Combined):	44.8MPG
Fuel Tank Capacity:	62L
Number Of Gears:	5 SPEED
Top Speed:	134MPH
Acceleration 0-100 km/h:	10.5s
Engine Power BHP:	114BHP