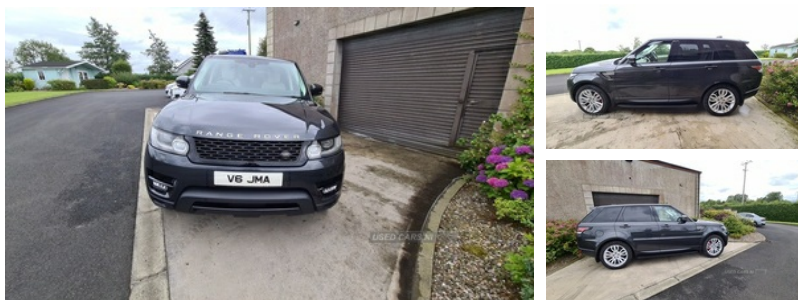


## Land Rover Range Rover Sport 3.0 SDV6 [306] HSE 5dr Auto | Mar 2017

### IMMACULATE RANGEROVER SPORT



2017 Grey Rangerover sport hse 306 ,74,500 miles , ivory leather interior full service history, fixed side steps, heated front and rear seats. Price £21,500 o.n.o TEL.07715321609 .No texts or emails will be answered

### Vehicle Features

2 way active front head restraints, 2 way rear head restraints, 3 point seatbelts on all seats, ABS + EBD + EBA, Adaptive brake lights, Adaptive dynamics, adjustable, Auto air recirculation, Auto dimming rear view mirror, Auto locking differential, Auto lock system when vehicle in motion, Autonomous emergency braking, Bluetooth audio streaming, Bluetooth telephone connection, Body coloured door mirrors, CBC - (Cornering brake control), Centre armrest with cubby box, Climate control memory, Curtain airbags, DAB Digital radio, Daytime running lights, Diesel particulate filter, Door/quarter lights in toughened plate glass, Driver's footrest, DSC - Dynamic Stability Control, Dual stage Driver/Passenger Airbags, Electric child locks, Electric front/rear windows/one touch operation, Electric heated, Electronic air suspension, Electronic parking brake, Electronic traction control, folding door mirrors with memory + approach lamp, Follow me home headlights, Front/rear passenger grab handles, Front and rear cupholders, Front door storage bin, Front fog lights, Front map lights, Front parking aid with visual display, Front seat back map pockets, Front seatbelt pretensioners, Front side airbags, Front stowage pocket, Gesture tailgate, Glovebox, HDD Premium navigation including voice control, Headlight washers, Heated rear window, Heated washer jets, Heated windscreen, Height adjustable front seatbelts, Hill descent control, InControl connect Pack - Range Rover Sport, InControl protect, InControl secure, Isofix child seat preparation, Keyless entry, Laminated front side windows, Laminated windscreen,

**£21,500** O.N.O

|                      |                       |
|----------------------|-----------------------|
| <b>Miles:</b>        | 74500                 |
| <b>Fuel Type:</b>    | Diesel                |
| <b>Transmission:</b> | Automatic/Other       |
| <b>Colour:</b>       | Grey                  |
| <b>Engine Size:</b>  | 2993                  |
| <b>CO2 Emission:</b> | 185                   |
| <b>Tax Band:</b>     | I (£335 p/a)          |
| <b>Body Style:</b>   | Sport utility vehicle |
| <b>Reg:</b>          | V6 JMA                |

### Technical Specs

| DIMENSIONS                          |          |
|-------------------------------------|----------|
| <b>Length:</b>                      | 4850mm   |
| <b>Width:</b>                       | 1983mm   |
| <b>Height:</b>                      | 1780mm   |
| <b>Seats:</b>                       | 5        |
| <b>Luggage Capacity (Seats Up):</b> | 784L     |
| <b>Gross Weight:</b>                | 3050KG   |
| <b>Max. Loading Weight:</b>         | 865KG    |
| PERFORMANCE & ECONOMY               |          |
| <b>Fuel Consum. (Urban Cold):</b>   | 35.8MPG  |
| <b>Fuel Consum. (Extra Urban):</b>  | 44.1MPG  |
| <b>Fuel Consum. (Combined):</b>     | 40.4MPG  |
| <b>Fuel Tank Capacity:</b>          | 86L      |
| <b>Number Of Gears:</b>             | 8 SPEED  |
| <b>Top Speed:</b>                   | 130MPH   |
| <b>Engine Power BHP:</b>            | 301.7BHP |

LED rear lamps, Light atlas exterior trim, Locking wheel nuts, Low traction launch, Luggage compartment lighting, Mist sensor, Multifunction steering wheel, Oxford perforated leather, Perimetric and volumetric anti theft alarm, Pollen filter, Push button starter, Rain sensor windscreen wipers, Reach/rake electric adjustable steering column + entry/exit tilt away, Rear centre armrest, Rear park distance control, Rear wash/wipe, Remote locking, Remote window closing, Roller blind loadspace cover, Roll stability control, Seatbelt warning, Speed sensitive power steering, TFT Virtual Instrument Panel, Three 12V accessory power outlets, TMC with touch screen and media storage, Traffic sign recognition, Trailer stability assist, Trip computer, Twin bright tailpipes, Tyre pressure monitoring system, USB/aux input socket