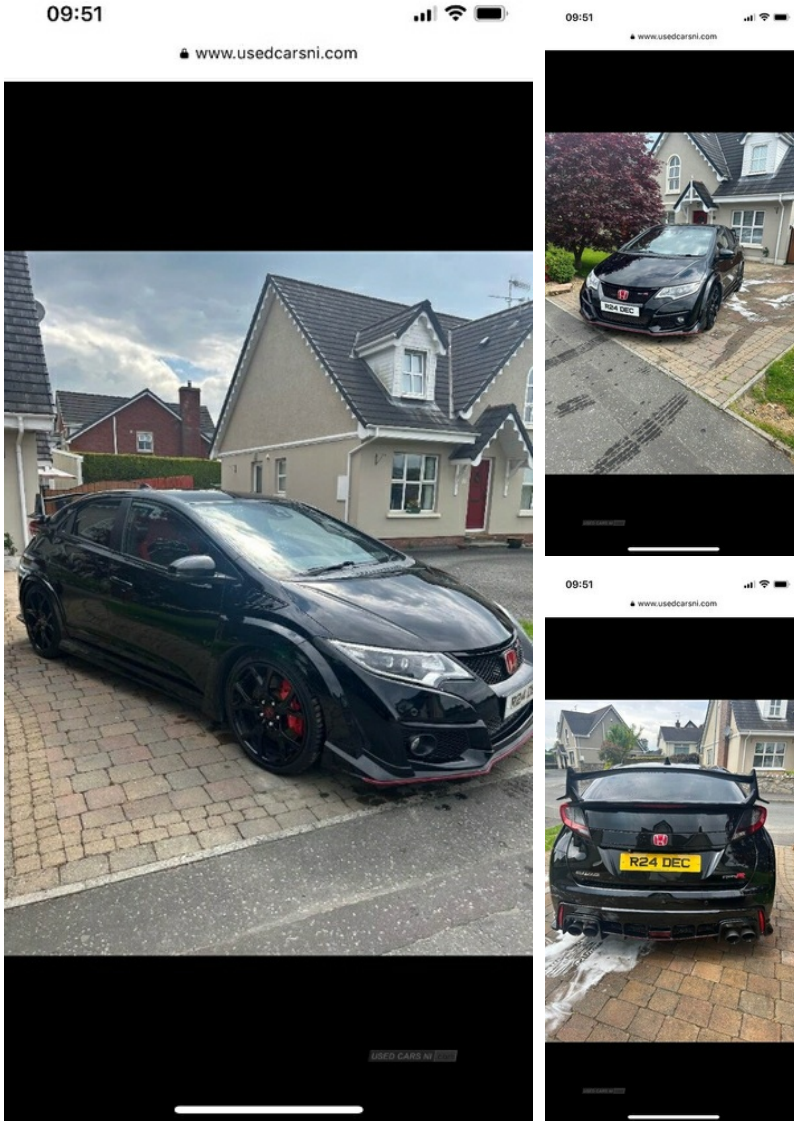


Honda Civic 2.0 i-VTEC Type R GT 5dr | Aug 2016

£19,500

IMMACULATE FK2 TYPE R GT



Car is located in south of Ireland
Original Northern Irish car
Fully stamped service book
Car is in immaculate condition
380bhp mapped on hondadata
Full milltek exhaust
Injen intake
Upgraded intercooler
Upgraded pipes and hoses
New michelin ps5 all round

| | |
|----------------------|--------------|
| Miles: | 41000 |
| Fuel Type: | Petrol |
| Transmission: | Manual |
| Colour: | Black |
| Engine Size: | 1996 |
| CO2 Emission: | 170 |
| Tax Band: | H (£305 p/a) |
| Body Style: | Hatchback |
| Reg: | Uhz5663 |

Technical Specs

| DIMENSIONS | |
|-------------------------------------|--------|
| Length: | 4390mm |
| Width: | 1878mm |
| Height: | 1466mm |
| Seats: | 4 |
| Luggage Capacity (Seats Up): | 475L |
| Gross Weight: | 1700KG |
| Max. Loading Weight: | 318KG |

| PERFORMANCE & ECONOMY | |
|------------------------------------|----------|
| Fuel Consum. (Urban Cold): | 30.1MPG |
| Fuel Consum. (Extra Urban): | 46.3MPG |
| Fuel Consum. (Combined): | 38.7MPG |
| Fuel Tank Capacity: | 50L |
| Number Of Gears: | 6 SPEED |
| Top Speed: | 168MPH |
| Acceleration 0-100 km/h: | 5.7s |
| Engine Power BHP: | 305.8BHP |

The car is flawless, genuine reason for sale
Any questions give me a shout
No finance on the car
+353857136342

Vehicle Features

'Shark fin' mobile antenna, 2x USB and HDMI, 4 three point seatbelts, 6 way adjustable drivers seat, 8 speakers, 19" Alloy wheels, ABS+EBD+Brake assist, Active dampers, Aha app, Alloy gearknob, Alloy pedals, Ambient lighting, Auto dimming rear view mirror, Automatic coming/leaving home lighting function, Automatic headlights with dusk sensor, Automatic rain sensing wipers, Black roof lining, Black side skirts, BLIS (Blind spot information system), Bluetooth hands free telephone connection, Boot light, Cargo hooks, Centre console accessory socket, City safety braking system, Connect with Garmin sat nav, Cross traffic monitor, Cruise control + speed limiter, DAB audio, Deadlocks, Deflation detection system, Driver's seat height adjustment, Dual climate control air conditioning system, Dual front SRS airbags, ECU immobiliser, Electric adjustable heated door mirrors, Electric front/rear windows/one touch operation, Forward collision warning, Front/rear courtesy lights, Front accessory power socket, Front and rear curtain airbags, Front and rear parking sensors, Front fog lights, Front headrests, Front map lights, Front seatbelt pretensioners, Front side airbags, Gear shift indicator, High beam assist, Hill start assist, Intelligent multi info display, internet, internet radio/MP3/CD, Isofix system on outer rear seats, Lane departure warning system, Leather steering wheel, LED daytime running lights, LED Headlights, LED high level brake lights, Lower mesh grille, PAS, Passenger airbag deactivate switch, Power foldback door mirrors, Privacy glass, Rear parking camera, Rear wing spoiler, Red instrument illumination, Remote central locking with 2 remote folding keys, Remote control door mirrors, Remote window closing, Smart entry + Smart start, Sports seats, Steering wheel mounted audio controls, Sub trunk compartment with lid, Suede fabric upholstery, Sunvisors with illuminated vanity mirrors, Tilt/telescopic adjust steering wheel, Tinted rear windscreen, Tonneau cover, touch screen, Traffic sign recognition, Tyre repair kit, Ultrasonic alarm, Vehicle stability assist