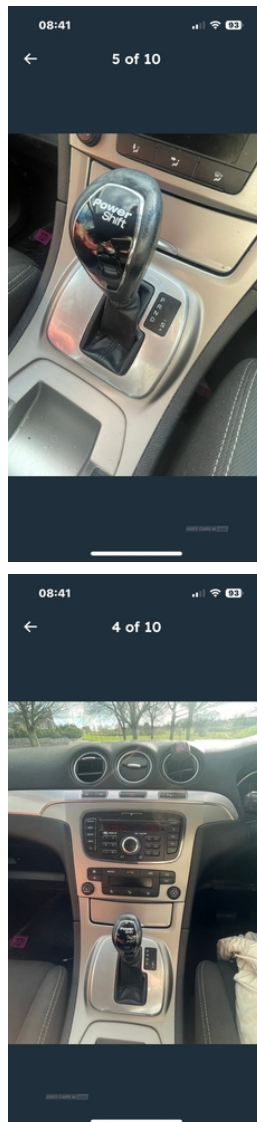
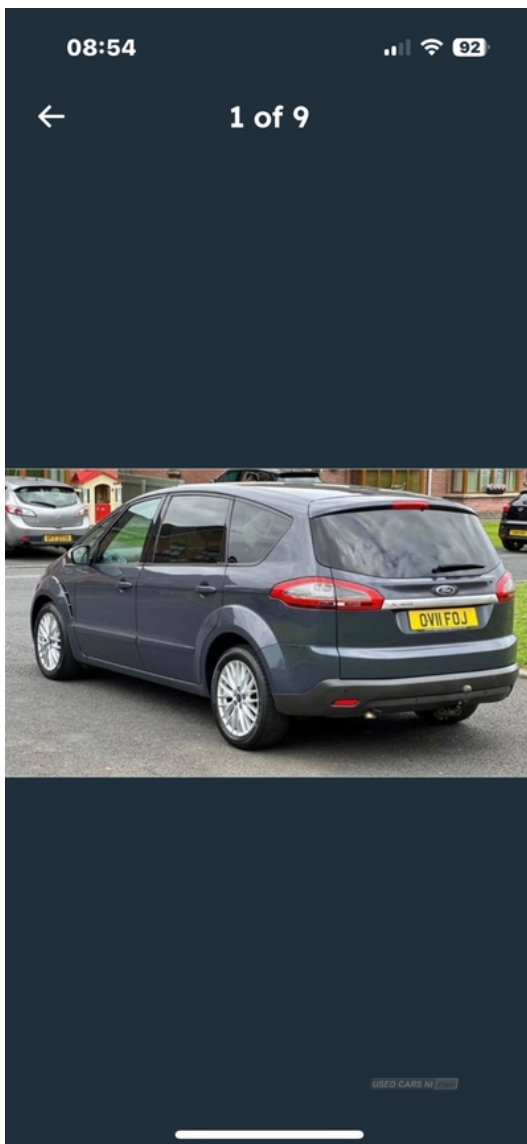


Ford S-Max 2.0 TDCi 140 Zetec 5dr Powershift | Apr 2011

FORD SMAX TEXT 07391301239

£2,100



Miles:	144000
Fuel Type:	Diesel
Transmission:	Semi-Automatic
Colour:	Grey
Engine Size:	1997
CO2 Emission:	159
Tax Band:	G (£255 p/a)
Body Style:	MPV
Reg:	OV11FOJ

Technical Specs

DIMENSIONS

Length:	4801mm
Width:	1884mm
Height:	1660mm
Seats:	7
Luggage Capacity (Seats Up):	285L

Gross Weight:	2505KG
Max. Loading Weight:	816KG

PERFORMANCE & ECONOMY

Fuel Consum. (Urban Cold):	38.2MPG
Fuel Consum. (Extra Urban):	54.3MPG
Fuel Consum. (Combined):	47.1MPG
Fuel Tank Capacity:	70L
Number Of Gears:	6 SPEED
Top Speed:	120MPH
Acceleration 0-100 km/h:	10.9s
Engine Power BHP:	138.1BHP

Vehicle Features

2 individual folding 3rd row seats, 3 individual fold flat 2nd row seats, 3 point seatbelts on all seats, 4 spoke leather steering wheel, 12V accessory sockets - front and rear, ABS/EBD, Apple stopper, Automatic illuminating hazard lights in sudden deceleration, Bluetooth hands free phone with voice control system, Body colour door handles, Body coloured bumpers, Body colour electric adjustable heated door mirrors, Centre console with armrest/storage box + cupholder, Chrome finish to interior door handles, Daphne cloth upholstery, Diesel particulate filter, Driver/Front Passenger airbags, Drivers knee airbag, Drivers seat

with electric height adjustment + manual lumbar support, Dual air conditioning with automatic temperature electronic control, Electric front and rear windows + one touch + global open/closing, ESP+EBA, Front and rear (row 2) curtain airbags, Front and rear courtesy reading lights, Front and rear park assist, Front fog lights, Front overhead courtesy lights with theatre style dimming and delay, Front passenger seat manual height adjustment with lumbar support, Front side airbags, Front variable intermittent wipers with electric wash, Heated windscreen + heated windscreen washer jets, Height adjustable head restraints, Illuminated entry system, Immobiliser, Isofix rear child seat preparation in 2nd row, Leather gear knob, Locking wheel nuts, Overhead console with sunglasses holder, PAS, Reach + rake adjustable steering column, Rear stowage boxes, Remote audio controls on steering wheel, Remote control central/double locking, Sports front seats, Tailgate wash/wipe, Thatcham category 1 alarm system with perimeteric + volumetric protection, Tie down hooks in luggage area, Tonneau cover, Tyre repair kit