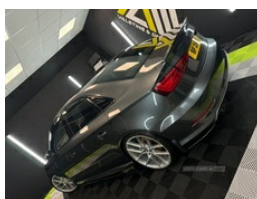
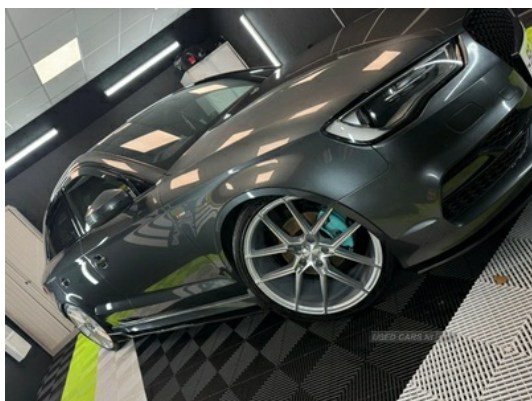


## Audi A3 2.0 TDI S Line 4dr | Apr 2014

**WELL KEPT AND MAINTAINED CAR - GOT EVERYTHING IT EVER NEEDED**

# £6,800



150k miles - will rise as driven daily  
Lowered on Prosport Coilovers - original springs here  
Veeman vfs39 Alloys - less than a year old  
19" wheels  
carbon fibre boot spoiler  
side skirts  
front splitter  
mudflaps  
multifunctional flat bottom steering wheel  
parking sensors - front and back  
heated seats  
honeycomb grill  
brake pads and discs just replaced  
S-Line badges  
full leather interior

### Vehicle Features

3 adjustable rear headrests, 3 point seatbelts on all seats, 3 spoke flat bottomed S Line multifunction steering wheel, 4 lashing points to secure luggage, 60/40 split folding rear seat, ABS/EBD, Active bonnet, Active front headrests, Adjustable front armrest, Aluminium air vent surrounds, Aluminium door sill trims, Aluminium side window trim, Aluminium trim elements, Anti-theft wheel bolts, ASR, Audi drive select, Audi music interface, Black cloth headlining, Body colour bumpers, Body colour door mirrors with integral indicators, Body colour roof

<b>Miles:</b>	150000
<b>Fuel Type:</b>	Diesel
<b>Transmission:</b>	Manual
<b>Colour:</b>	Grey
<b>Engine Size:</b>	1968
<b>CO2 Emission:</b>	107
<b>Tax Band:</b>	B (£20 p/a)
<b>Body Style:</b>	Saloon
<b>Reg:</b>	SFZ 858

### Technical Specs

DIMENSIONS	
<b>Length:</b>	4456mm
<b>Width:</b>	1796mm
<b>Height:</b>	1416mm
<b>Seats:</b>	5
<b>Luggage Capacity (Seats Up):</b>	425L
<b>Gross Weight:</b>	1865KG
<b>Max. Loading Weight:</b>	550KG
PERFORMANCE & ECONOMY	
<b>Fuel Consum. (Urban Cold):</b>	54.3MPG
<b>Fuel Consum. (Extra Urban):</b>	80.7MPG
<b>Fuel Consum. (Combined):</b>	68.9MPG
<b>Fuel Tank Capacity:</b>	50L
<b>Number Of Gears:</b>	6 SPEED
<b>Top Speed:</b>	137MPH
<b>Acceleration 0-100 km/h:</b>	8.7s
<b>Engine Power BHP:</b>	147.5BHP

spoiler, Chrome exhaust tailpipes, Coat hooks on both sides, Colour driver's information system display, Cup holders, Curtain airbags, DAB Digital radio, Diesel particulate filter, Door sill trims with S line logo, Driver/Front Passenger airbags, Driver/passenger sunvisors, Driver and passenger side airbags, Drivers knee airbag, Dual zone electronic climate control, EDL, Electromechanical parking brake, ESC - Electronic Stability Control + traction control, Front/rear floor mats, Front and rear electric windows, Front and rear interior lights with delay, Front fog lights, Front passenger airbag deactivation, Heated rear window, Heated windscreen washer jets, Height/depth adjustable steering column, Height adjustable front seats, High gloss black fog light surround, High gloss black front grille, Illuminated glovebox, Illuminated luggage compartment, ISOFIX child seat preparation+airbag deactivation, LED daytime running lights, Low washer fluid indicator, Manual rear child locks, Matt brushed aluminium inlays, Passenger underseat drawer, Perforated leather gearknob, Remote control central locking, Removable rear parcel shelf, Seatbelt warning, Service interval indicator, S Line body styling, Space saver spare wheel, Storage and luggage pack - A3/RS3, Storage compartment in centre console, Storage compartments in doors, Thatcham category 1 alarm + immobiliser, Twin exhaust tailpipe, Voice control system, Warning triangle and first aid kit