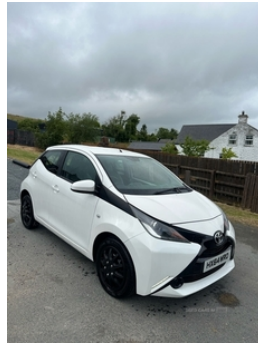


**Toyota Aygo 1.0 VVT-i X-Play 5dr | Sep 2014****FREE TAX LOW INSURANCE****£3,495** O.N.O

□2014 Toyota Aygo X-play □1.0 (very low insurance group) □  
87587 miles □ serviced at 87300 □ very clean car inside and out  
□ free tax □4 new tires □perfect first time car □previously  
damaged and professionally repaired with all genuine parts

**Vehicle Features**

2 speed wipers/variable intermittent/mist function, 4 speakers, 12V Accessory socket, 50/50 split folding rear seat, ABS, Air conditioning, Air recirculation system, Auxiliary input socket, Bluetooth system, Body colour bumpers, Body colour door handles, Body colour door mirrors, Centre console storage, Digital clock, Driver's seat height adjuster, Driver/passenger seat recline/slide adjust, Driver/passenger vanity mirrors with covers, Driver and passenger airbags, Driver and passenger sunvisors, Electric adjustable door mirrors, Electric front windows, Electric pack A - Transporter, Engine immobiliser, ESP, Fabric upholstery, Front cupholder, Front map reading lights, Front side airbags, Fuel indicator with low level warning, Glovebox, Green tinted glass, Headlamp levelling, Heated door mirrors, Heated rear windscreen, Height adjustable front seatbelts with pre-tensioners and load limiters, Hill start assist, Isofix system on outer rear seats, LED daytime running lights, Lights on warning, Lockable fuel cap, Passenger airbag deactivate switch, Pollen filter, Rear 12v plug, Rear child proof door locks, Rear cupholders, Rear

<b>Miles:</b>	87000
<b>Fuel Type:</b>	Petrol
<b>Transmission:</b>	Manual
<b>Colour:</b>	White
<b>Engine Size:</b>	998
<b>CO2 Emission:</b>	95
<b>Tax Band:</b>	A (£0 p/a)
<b>Body Style:</b>	Hatchback
<b>Insurance group:</b>	7E
<b>Reg:</b>	HX64WRO

**Technical Specs****DIMENSIONS**

<b>Length:</b>	3455mm
<b>Width:</b>	1615mm
<b>Height:</b>	1460mm
<b>Seats:</b>	4
<b>Luggage Capacity (Seats Up):</b>	168L
<b>Gross Weight:</b>	1240KG
<b>Max. Loading Weight:</b>	400KG

**PERFORMANCE & ECONOMY**

<b>Fuel Consum. (Urban Cold):</b>	56.5MPG
<b>Fuel Consum. (Extra Urban):</b>	78.5MPG
<b>Fuel Consum. (Combined):</b>	68.9MPG
<b>Fuel Tank Capacity:</b>	35L
<b>Number Of Gears:</b>	5 SPEED
<b>Top Speed:</b>	99MPH
<b>Acceleration 0-100 km/h:</b>	14.2s
<b>Engine Power BHP:</b>	68.4BHP

headrests, Rear spoiler, Rear storage bins, Rear wiper, Remote central locking, Removable rear parcel shelf, Roof mounted aerial, Side curtain airbags, Speed limiter, Speed sensitive power steering, Steering wheel mounted radio/phone controls, Stepless tilt adjustable steering column, Stereo radio, Storage bins on all doors, Tachometer, Tonneau cover, Tyre pressure warning, Tyre repair kit, USB connection, Vehicle Stability Control (VSC)