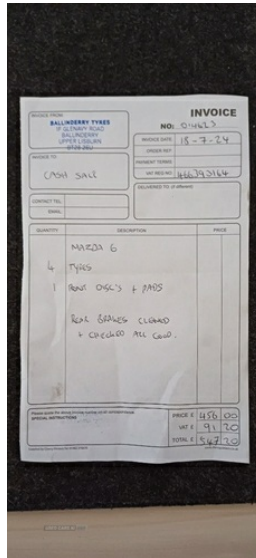


**Mazda 6 2.0 SE-L Nav 4dr | Aug 2015**

**£7,150**



Great condition, 4 new tyres and new break pads fitted recently. Just under 55k miles.

Only selling as we have a dog now and need an estate.

**Vehicle Features**

2 cupholders, 3 point ELR front seat belts, 3 rear 3 point seatbelts with ELR, 6 speakers, 7" touch screen, 12V power socket in centre console, 17" alloy wheels, 60/40 split folding rear seat, ABS + EBD + EBA, Active front headrests, Adjustable front and rear headrests, Adjustable speed limiter, Auto dimming rear view mirror, Auxiliary input socket, Auxiliary power socket in luggage area, Bluetooth connectivity with voice control, Body colour bumpers, Body colour door handles, Cigarette lighter, Cloth upholstery, Coming/leaving home lighting function, Cruise control, DAB Digital radio, Daytime running lights, Door mirror integrated indicators, Driver/passenger sunvisors with ticket holders + illuminated vanity mirrors, Driver and passenger airbags, Driver seat lumbar adjustment, Drivers seatbelt reminder, DSTC-Dynamic Stability and Traction Control, Dual zone climate control, Dusk sensitive headlamps, Electric adjustable heated door mirrors, Electric folding door mirrors, Electric front+rear windows, Electronic parking brake, Engine start/stop button, EPAS, Front and rear curtain airbags, Front and

<b>Miles:</b>	55000
<b>Fuel Type:</b>	Petrol
<b>Transmission:</b>	Manual
<b>Colour:</b>	White
<b>Engine Size:</b>	1998
<b>CO2 Emission:</b>	129
<b>Tax Band:</b>	D (£160 p/a)
<b>Body Style:</b>	Saloon
<b>Insurance group:</b>	16E
<b>Reg:</b>	YFZ1820

**Technical Specs**

<b>DIMENSIONS</b>	
<b>Length:</b>	4870mm
<b>Width:</b>	1840mm
<b>Height:</b>	1450mm
<b>Seats:</b>	5
<b>Luggage Capacity (Seats Up):</b>	489L
<b>Gross Weight:</b>	1935KG
<b>Max. Loading Weight:</b>	488KG

<b>PERFORMANCE &amp; ECONOMY</b>	
<b>Fuel Consum. (Urban Cold):</b>	39.8MPG
<b>Fuel Consum. (Extra Urban):</b>	61.4MPG
<b>Fuel Consum. (Combined):</b>	51.4MPG
<b>Fuel Tank Capacity:</b>	62L
<b>Number Of Gears:</b>	6 SPEED
<b>Top Speed:</b>	129MPH
<b>Acceleration 0-100 km/h:</b>	9.5s
<b>Engine Power BHP:</b>	143.5BHP



rear door pockets, Front and rear parking sensors, Front armrest with storage bin, Front fog lights, Front side airbags, Height adjustable drivers seat, Height adjustable front seatbelts with pre-tensioners and load limiters, Height adjustable passenger seat, Hill hold control, Illuminated glovebox with lock, Integrated navigation system, Interior dome light with integral spotlight, Intrusion minimizing safety brake pedals, Isofix rear child seat fastenings, Leather steering wheel and gear knob, Multimedia System, Passenger airbag deactivate switch, Passenger grab handles, Passenger seat back pocket, Privacy glass, Radio/single CD player, Rain sensor windscreen wipers, Rear air vents, Remote central locking + deadlocks, Scuff plates, Smart City Brake Support - SCBS, Steering wheel mounted remote controls, Supplementary restraint system - central control unit and crush sensors, Thatcham category 1 alarm + immobiliser, Tilt/telescopic adjust steering wheel, Trip computer, Tyre pressure monitoring system, Tyre repair kit, USB/iPod connection