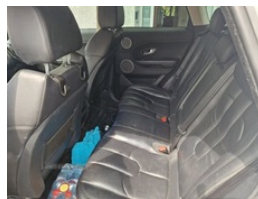


## Land Rover Range Rover Evoque 2.2 SD4 Pure 5dr [Tech Pack] | May 2014

# £5,200



Car has new timing belt and clutch and flywheel done 45k ago also a new factory fitted steering rack last week a recoll and a new clutch cylinder last week will be getting a full service this week selling because got a new car no faults great car for money

### Vehicle Features

3 rear 3 point seatbelts, 3 seat rear bench, 12V power point front, 12V power point in luggage area, 60/40 split folding rear seat, ABS, Alarm, Audio Connectivity System, audio server and CD storage, Auto climate control with air filtration, Automatic headlamp activation, Auxiliary Audio Jack, Auxiliary heater, Bluetooth telephone connectivity, Body coloured bumpers, Brunel tailgate finish, Centre console storage with lid, Cruise control, DAB Digital radio, Diesel particulate filter, Driver/passenger sunvisors and illuminated vanity mirrors, Driver and passenger airbags, Drivers knee airbag, Dynamic route guidance, Electronic parking brake, EPAS, Footwell illumination, Front centre armrest, Front head restraints, Front Parking Aid, Front seatbelt pretensioners with force limiters, Front side airbags with curtain airbags, HDD Premium navigation, Heated rear windscreen, Heated windscreen, Heated windscreen washers, Height/reach adjustable steering column, Height adjustable front seatbelts, Hill descent control, Hill start assist, Illuminated glovebox, Immobiliser, Interior mood lighting, Isofix child seat preparation, Lashing points, Leather gear knob, Leather steering wheel, Leather upholstery, Locking wheel nuts, Luggage compartment lighting, Luggage cover, Power front/rear windows with global close, Proximity sensing and touch detection for overhead map lights, Push button starter, Rain sensor windscreen wipers, Rear centre armrest with 2 cupholders, Rear centre head restraint, Rear headrests, Rear

<b>Miles:</b>	165000
<b>Fuel Type:</b>	Diesel
<b>Transmission:</b>	Manual
<b>Colour:</b>	White
<b>Engine Size:</b>	2179
<b>CO2 Emission:</b>	149
<b>Tax Band:</b>	F (£210 p/a)
<b>Body Style:</b>	Sport utility vehicle
<b>Insurance group:</b>	33E
<b>Reg:</b>	Sg05wpg

### Technical Specs

#### DIMENSIONS

<b>Length:</b>	4365mm
<b>Width:</b>	1900mm
<b>Height:</b>	1635mm
<b>Seats:</b>	5
<b>Luggage Capacity (Seats Up):</b>	575L
<b>Gross Weight:</b>	2350KG
<b>Max. Loading Weight:</b>	680KG

#### PERFORMANCE & ECONOMY

<b>Fuel Consum. (Urban Cold):</b>	40.9MPG
<b>Fuel Consum. (Extra Urban):</b>	56.5MPG
<b>Fuel Consum. (Combined):</b>	49.6MPG
<b>Fuel Tank Capacity:</b>	60L
<b>Number Of Gears:</b>	6 SPEED
<b>Top Speed:</b>	124MPH
<b>Engine Power BHP:</b>	187.7BHP

parking aid, Rear spoiler, Rear wiper, Remote central locking, Roll stability control, Satin brushed aluminium inserts, Seatbelt warning, Service interval indicator, Steering wheel mounted audio/cruise controls, Terrain Response, Traction control, Trailer stability assist, Trip computer, USB connection, Voice control system