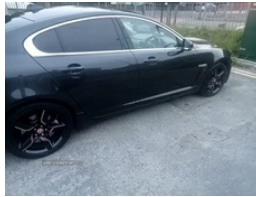


Jaguar XF 2.2d [163] Portfolio 4dr Auto | Mar 2015

£11,000

LOW MILEAGE



One nice 2015 2.2 Jaguar with only 64,000 miles, 2 tone seats and all the toys. Updated wheels, blackout windows in back one nice clean perfect running car with no faults. 1st to see will buy got ne cheap

PH 07762632478

Vehicle Features

2 X front 12v power sockets, 3 rear seat head restraints, 3 spoke leather steering wheel, 7" colour screen, 12V socket in rear of vehicle, 16 way driver/12 way passenger electrically adjustable seats with driver memory, 60/40 asymmetric split folding rear seats, ABS+EBA, Alarm/immobiliser, Anti-whiplash front headrests, Approach lamps, Auto dimming rear view mirror, Automatic headlights, Auxiliary heater, Auxiliary input socket, Bi-Xenon headlights with LED day running lights, Black window surrounds, Blind spot monitor, Bluetooth audio streaming, Bluetooth telephone connectivity, Body colour bumpers, Brake pad warning light, Chrome grille, Coat hooks, Cornering brake control, DAB digital radio module, Deadlocks, Drive away door locking, Driver/Front Passenger airbags, Driver/passenger lumbar adjustment, Driver information centre, Drivers footrest, DSC - Dynamic Stability Control, Dual zone climate control, Electric adjustable heated door mirrors, Electric folding and auto dimming door mirrors, Electric front/rear windows with one touch/anti pinch, Electronic parking brake, Folding rear centre armrest, Footwell lights, Front/rear seatbelt pre-tensioners, Front

Miles:	64000
Fuel Type:	Diesel
Transmission:	Automatic/Other
Colour:	Grey
Engine Size:	2179
CO2 Emission:	129
Tax Band:	D (£160 p/a)
Body Style:	Saloon
Reg:	Af64mck

Technical Specs

DIMENSIONS	
Length:	4961mm
Width:	1877mm
Height:	1460mm
Seats:	5
Luggage Capacity (Seats Up):	540L
Gross Weight:	2320KG
Max. Loading Weight:	575KG

PERFORMANCE & ECONOMY	
Fuel Consum. (Urban Cold):	48.7MPG
Fuel Consum. (Extra Urban):	64.2MPG
Fuel Consum. (Combined):	57.7MPG
Fuel Tank Capacity:	64L
Number Of Gears:	8 SPEED
Top Speed:	130MPH
Engine Power BHP:	160.9BHP

armrest, Front centre console storage box, Front Parking Aid, Front seatback pockets, Headlight washers, Heated and cooled front seats, Heated front seats, Heated front windscreen and timer, Heated rear window with timer, Interior mood lighting, Isofix child seat preparation, JaguarDrive selector, Jaguar sense, Keyless entry system, Keyless Start, Knurled Aluminium IP Finisher, Laminated windscreen, LED tail lights, Low rolling resistance tyres, Media interface, Navigation system with HDD mapping, Rain sensor windscreen wipers, RDS/TMC + DVD player, Reach/rake electric adjustable steering column + entry/exit tilt away, Rear centre head restraint, Rear parking sensor, Remote central locking, Reversing camera, Service interval indicator, Servotronic PAS, Side airbags, Side curtain airbags, Softgrain leather instrument panel and door top rolls, Softgrain leather upholstery, Steering wheel gearshift paddles, Steering wheel mounted audio/cruise controls, Sunvisors with illuminated vanity mirrors, Three 3 point rear seatbelts, Trip computer with dual function, Twin front cupholders, Twin rear cupholders, Tyre pressure monitoring system, Tyre repair kit