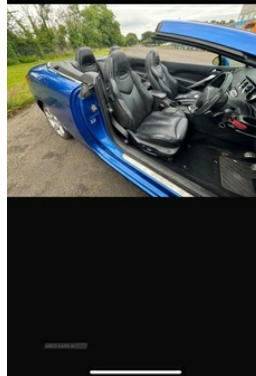
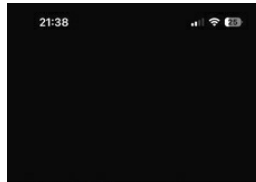


Peugeot 308 2.0 HDi 140 GT 2dr | May 2010

£2,750 O.N.O



Stunning convertible car, good driver.
Just passed mot
Very economical to run
Heated leather seats
Cruise control
Electric hard-top roof
Well looked after, no issues with the car

Vehicle Features

2 piece electrically retractable rigid roof, 2 rear head restraints,
4 three point seatbelts, 6 speakers (4 speakers/2 tweeters), 12V
power point front, 12V socket in luggage compartment, 18"

Miles:	103492
Fuel Type:	Diesel
Transmission:	Manual
Colour:	Blue
Engine Size:	1997
CO2 Emission:	155
Tax Band:	G (£255 p/a)
Body Style:	Convertible
Insurance group:	25E
Reg:	Vjz7140

Technical Specs

DIMENSIONS

Length:	4400mm
Width:	1817mm
Height:	1426mm
Seats:	4
Luggage Capacity (Seats Up):	465L
Gross Weight:	2020KG
Max. Loading Weight:	346KG

PERFORMANCE & ECONOMY

Fuel Consum. (Urban Cold):	36.2MPG
Fuel Consum. (Extra Urban):	58.8MPG
Fuel Consum. (Combined):	47.8MPG
Fuel Tank Capacity:	60L
Number Of Gears:	6 SPEED
Top Speed:	129MPH
Acceleration 0-100 km/h:	11.1s
Engine Power BHP:	138.1BHP

Lincancabur alloy wheels, ABS/EBFD/EBA, Active front seat backrests, Aerial in rear spoiler, Aluminium finish to centre console/air vents/interior door handle surrounds, Aluminium gear knob, Aluminium pedals, Ambient interior lighting, Automatic door lock/re-lock after 30 seconds, Automatic front rain sensing wipers, Body colour bumpers, Body colour door/boot handles, Body colour door mirrors, Body colour side mouldings, Boot light, Boot lip spoiler, Boot net, Car location device via plip key, Carpet mats, Central button operating all 4 windows simultaneously, Centre armrest with storage box, Climate control, Courtesy light delay, Cruise control + speed limiter, Deadlocks, Diesel particulate filter, Double optic headlights with clear polycarbonate lenses, Driver's vanity mirror with cover/ticket holder, Electrically adjustable and heated door mirrors, Electric boot release on tailgate, Electric front and rear windows + anti trap + one touch, Electric pack A - Transporter, Electrochrome rear view mirror, ESP and ASR traction control with deactivation switch, External temperature gauge, Folding mirror with welcome light, Force limiting pretensioned front seat belts, Front fog lights, Front map reading lights, Front Parking Aid, Front passenger vanity mirror, Front seat back map pockets, Front side airbags, Head airbags, Headlight security delay illumination, Heated rear window with timer, Heated seats, Heating/air conditioning outlet in rear, Heat scarf, Height/reach adjust steering wheel, Ignition key in warning chime, Independent boot lock, Instrument panel light dimmer, Isofix location points on rear seats, JBL Hi-Fi system, Lights on warning, Lockable/illuminated air conditioned glovebox, Locking wheel bolts, Odour reducing carbon filter, Panic button, PAS - speed related, Passenger airbag deactivate switch, Pollen filter and air recycling, Protective shutter blind in boot, RD4-2 radio/MP3 CD player with aux input, Rear door bottle holders, Rear parking aid, Remote control central locking with two plip keys, Remote control closing for electric windows, Remote headlamp adjustment from fascia, Retractable steering column and brake pedal, Rev counter, Seatbelt warning, Service interval indicator, Smart driver/front passenger airbags, Space saver spare wheel, Speed sensitive stereo volume, Sports Leather steering wheel, Sports seats, Start and finish of roof retraction warning, Steering column remote controls/stereo equipment, Thatcham cat 1 ultrasonic alarm, Thatcham category 2 transponder immobiliser, Trip computer, Tyre pressure sensor, Visibility Pack - 308 CC, White dials with chrome surround, Wind stop