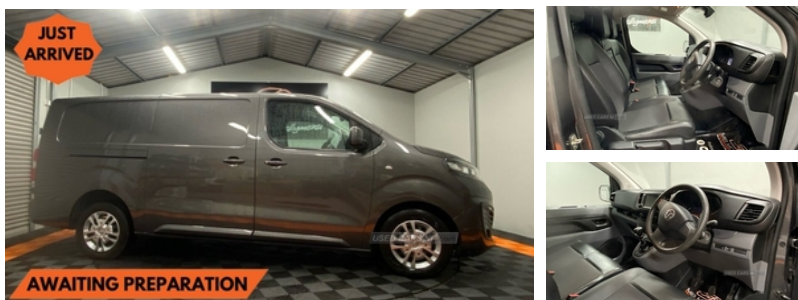




Vauxhall Vivaro 3100 2.0d 150PS Sportive H1 Van | Sep 2020

****NO VAT - 1 OWNER****

£14,495



This car comes with... - Full Vehicle Health Check - RAC Warranty Option Available inc UK & ROI - Fully Serviced - HPI Report - Valeted - Fuel - Ready to Drive away.... **Delivery Available anywhere in the UK & Ireland**

Vehicle Features

16in Steel Wheels with Full-Diameter Wheels Trims, 22.5 litres AdBlue tank, A4 storage on top, Air Conditioning, Anti-Theft Spare Wheel Cradle, Appearance Pack, Appearance pack - Vivaro L2, average and instantaneous fuel economy, average speed, bonnet and the passenger compartment, cab headliner, Cab Headliner, Cab soundproofing, Coolant Temperature Warning Light, Cruise Control with Speed Limiter, Curitiba cloth upholstery with vinyl side bolsters, Daytime Running Lights - LED, Driver airbag and front passenger airbag with deactivation switch, Driver drowsiness system, Drivers and Front Passengers Airbags, Driver Seat - Height - Reach - Backrest Recline - Lumbar Adjustment - Driver Seat Armrest - Padded Head Restraint, driving time, e-Call and b-Call, Electric front windows with one touch up/down facility, Electric Windows - Front with One Touch Facility, Electronic brake force distribution, Electronic engine deadlock immobiliser, Electronic Engine Deadlock Immobiliser, ESP - Electronic Stability Programme Plus with Traction Control, ESP including traction control, facia mounted gear lever, Facia Mounted Gear Lever, Facia Storage, Facia storage-upper glovebox, Fixed Floor-Mounted Load Restraint Lashing Eyes, Fixed floor mounted load restraint lashing eyes x8, FlexCargo load through bulkhead, floor mounted handbrake lever, Floor

Miles:	63000
Fuel Type:	DIESEL
Transmission:	Manual
Colour:	Grey
Engine Size:	1997
Tax Band:	Light goods vehicle (£335 p/a)
Body Style:	Van
Reg:	FL70WYM

Technical Specs

DIMENSIONS	
Length:	5309mm
Width:	1920mm
Height:	1935mm
Seats:	3
Gross Weight:	2940KG

PERFORMANCE & ECONOMY	
Fuel Consum. (Urban Cold):	23.7MPG
Fuel Consum. (Extra Urban):	43.5MPG
Fuel Consum. (Combined):	41.5MPG
Fuel Tank Capacity:	70L
Number Of Gears:	6 SPEED
Top Speed:	106MPH
Acceleration 0-100 km/h:	12.6s
Engine Power BHP:	147.5BHP

Mounted Handbrake Lever, Fold flat centre seat backrest, Four-Channel Anti-Lock Braking System - Anti-lock Braking System, Four channel Anti lock braking system, Front cornering lights, Front door pockets, Front Fog Lights, Fuel Economy Gauge, Fuel Gauge with Low Fuel Warning Light, fuel gauge with low fuel warning light and coolant temperature warning light, Full Size Spare Wheel, hazard warning, Hazard Warning Lights, Height adjustable outer front seatbelts, High Level Brake Light, high level brake light and side repeat indicator, Hill start assist, Hydraulic Power-Assisted Rack and Pinion System with Energy Absorbing Steering Column, Inertia-Reel Lap and Diagonal Seatbelts, inertia reel lap and diagonal seatbelt, Instrumentation - Speedometer, Lights on audible warning, Lights On Audible Warning, Lockable Fuel Filler Cap, lockable fuel filler cap and anti theft spare wheel cradle, lower shelf, Manually Foldable Electrically Adjustable-Heated Door Mirrors, Multi-Function Trip Computer, Multi function trip computer, Multimedia, Nearside and Offside Sliding Side Access Doors, open lower glovebox with 12v socket and aux-in, PAS, pocket in gear lever, Reach and rake adj steering wheel, Reach and Rake Adjustable Steering Wheel, rear fog light, Rear Fog Lights, Rear Parking Distance Sensors, Rear tilting/removable parcel tray, Remote Control Central Deadlocking, Remote control door locking, rev counter, Rev Counter, reversing light, Roof-Mounted Flexible Aerial, Seats - Dual Front Passengers Bench with Underseat Storage, Security Alarm System, Security alarm system with monitors doors, selective door locking, Selective Door Locking, Side Repeat Indicators, Speedometer, steering column lock, Steering Column Lock, Steering Column Mounted Audio Controls, Steering column mounted audio controls and flexible roof mounted aerial, Tachometer, tailgate, trip odometer, Twin Reversing Lights, two drink holders, two keys with integral remote and door deadlocks, Unglazed Rear Doors - 90-180 Opening, Vauxhall Connect, Vauxhall connect box, vehicle range, Visibility Pack, Visibility Pack - Vivaro