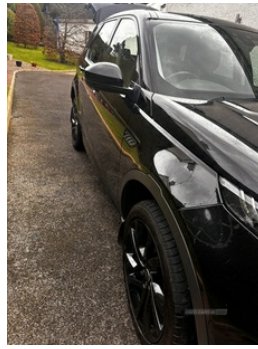


31 Greenfield, Fivemiletown, BT75 0RZ
07770967170

Land Rover Discovery Sport 2.0 TD4 180 HSE Luxury 5dr Auto | Mar 2019

£13,500 O.N.O



2019 Discovery Sport HSE Black Pack Pan roof
71000 miles MOT July25
Automatic Diesel
7 seater
Detachable Tow bar never used

Vehicle Features

2 seats in 3rd row, 2 USB charging points in 2nd row, 2nd row 60/40 split/fold, 2nd row folding rear centre armrest, 3 point seatbelts on all seats, 3rd row vents for climate control with 3rd row USB charging point, 8" colour display screen, 12 way driver/12 way passenger electrically adjustable seats with memory, ABS, Air quality sensor, auto dimming, Auto dimming interior mirror, Automatic headlights with high beam assist, Autonomous emergency braking, Bluetooth connectivity including audio streaming, Body colour door handles, Body coloured bumpers, CBC - (Cornering brake control), CD/DVD player, Centre console with sliding front armrest, Collision mitigation braking system, Configurable Ambient interior lighting, DAB Digital radio, Diesel particulate filter, Driver/Front Passenger airbags, Drivers knee airbag, Dual zone climate control with row 2 vents, Dynamic stability control, Electric folding, Electric front/rear windows, Electric gesture tailgate/boot

Miles:	71000
Fuel Type:	Diesel
Transmission:	Automatic/Other
Colour:	Black
Engine Size:	1999
CO2 Emission:	174
Tax Band:	Petrol/Diesel (£190 p/a)
Body Style:	Estate
Reg:	FFZ4800

Technical Specs

DIMENSIONS	
Length:	4599mm
Width:	2069mm
Height:	1724mm
Seats:	7
Luggage Capacity (Seats Up):	981L
Gross Weight:	2660KG
Max. Loading Weight:	706KG

PERFORMANCE & ECONOMY

Fuel Consum. (Urban Cold):	44.8MPG
Fuel Consum. (Extra Urban):	60.1MPG
Fuel Consum. (Combined):	42.8MPG
Fuel Tank Capacity:	54L
Number Of Gears:	9 SPEED
Top Speed:	117MPH
Acceleration 0-100 km/h:	9.9s
Engine Power BHP:	177BHP

lid, Electronic brake force distribution, Electronic parking brake, Emergency brake assist, ESP + traction control, Fixed panoramic glass sunroof, Front and rear headrests, Front fog lamps, Heated and cooled front seats with heated rear seats, heated door mirrors with memory + approach lights, Heated steering wheel, Heated windscreen, Hill descent control, Hill start assist, Illuminated Aluminium Tread Plates, Illuminated vanity mirrors, Immobiliser, InControl protect, Intrusion sensor, Isofix child seat preparation, Keyless entry, Land Rover InControl apps, Leather steering wheel, Loadspace cover, Locking wheel nuts, Park assist - Parallel, PAS, Pedestrian airbag system, Perimeter alarm with volume sensing, perpendicular and parking exit, Premium carpet mats, Rain sensitive windscreen wipers, Rear wiper, Remote central locking, Roll stability control, Service interval indicator, Side and curtain airbags for front and 2nd row seats, Slide/recline 2nd row seats, Steering wheel mounted audio controls, Tilt/reach adjustable steering wheel, Traffic sign recognition, Trip computer, Twin cupholders in rear centre armrest, Tyre pressure monitoring system, USB connection located in centre console, Windsor leather upholstery