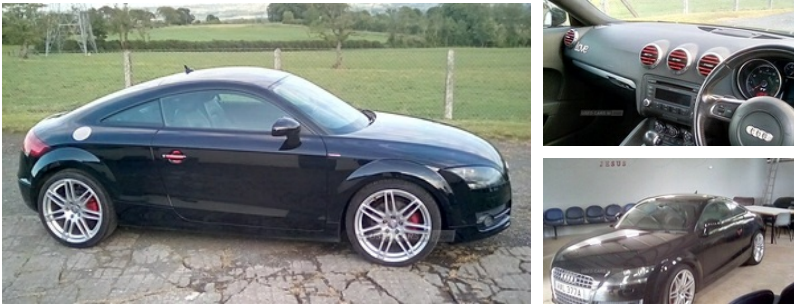


## Audi TT 2.0T FSI 2dr S Tronic | 2008

**ONLY 43800MLS, HEATED LEATHER INTERIOR ,GARAGED D FROM NEW**

# £4,950



Car bought new from Audi Belfast, 2 keys, part Audi service, just serviced 5/7/24, Black metallic, Paddle Shift, 17" Audi alloy wheels, red brake callipers, Air conditioning, Car drives like new, M.o.t until 24/3/2025, private number not for sale tel 07860907090

### Vehicle Features

3 spoke sports leather steering wheel, ABS, Aluminium interior trim, ASR traction control, Auxiliary input socket, Body colour bumpers, Body colour electric adjustable heated door mirrors, Driver's information system, Driver/Front Passenger airbags, EDL traction control, Electric front windows, Electronic climate control (ECC), ESP, Fasten seatbelt reminder, First aid kit, Front floor mats, Front fog lights, Front head restraints, Immobiliser, Jack and tool kit, Leather centre console armrest, Leather door handle inner base, Leather handbrake grip, Locking wheel nuts, Rake/reach adjustable steering wheel, Remote central locking, Retractable rear spoiler, S-Tronic steering wheel mounted paddles, Scuff plates with metal inlays, Service interval indicator, Speed sensitive power steering, Split folding rear seat, Thatcham Cat.1 alarm, Twin exhaust pipes, Tyre mobility system, Warning triangle

<b>Miles:</b>	43800
<b>Fuel Type:</b>	Petrol
<b>Transmission:</b>	Automatic/Other
<b>Colour:</b>	Black
<b>Engine Size:</b>	1984
<b>CO2 Emission:</b>	183
<b>Tax Band:</b>	I (£335 p/a)
<b>Body Style:</b>	Coupe
<b>Insurance group:</b>	34E
<b>Reg:</b>	Val377a

### Technical Specs

DIMENSIONS	
<b>Length:</b>	4178mm
<b>Width:</b>	1842mm
<b>Height:</b>	1352mm
<b>Seats:</b>	4
<b>Luggage Capacity (Seats Up):</b>	290L
<b>Gross Weight:</b>	1680KG
<b>Max. Loading Weight:</b>	400KG

PERFORMANCE & ECONOMY	
<b>Fuel Consum. (Urban Cold):</b>	26.7MPG
<b>Fuel Consum. (Extra Urban):</b>	47.1MPG
<b>Fuel Consum. (Combined):</b>	36.7MPG
<b>Fuel Tank Capacity:</b>	55L
<b>Number Of Gears:</b>	6 SPEED
<b>Top Speed:</b>	149MPH
<b>Acceleration 0-100 km/h:</b>	6.4s
<b>Engine Power BHP:</b>	197.1BHP

