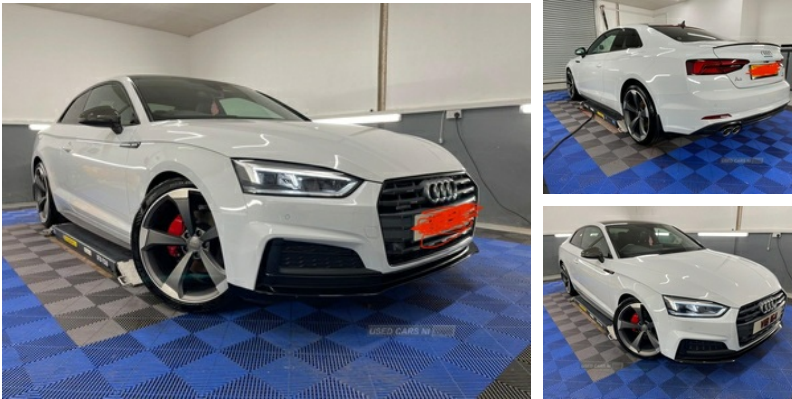


## Audi A5 3.0 TDI 286 Quattro S Line 2dr Tiptronic | Jan 2018

# £18,500 O.N.O



2018 V6 Audi 3.0L A5 Quattro Black edition Sline. Carbon fibre effect roof mirrors and interior. Well maintained motor. Full service history. Major service a month ago. Belfast service centre. 2 new front tyres. Front and rear pads and discs replaced. 22" TTRS twist alloys. Detachable tow bar. Car is ceramic coated for 3 years. X2 keys A few age related marks on the bumper. Calls only please messages won't be answered. 07964860901

### Vehicle Features

2 x USB charging port with aux input socket, ABS, Adjustable steering column, Air inlets in titanium black, Anti theft system, ASR, Audi drive select, Audi parking system plus with front and rear sensors, Audi smartphone interface, Auto dimming rear view mirror with acoustic windscreen, Automatic tri-zone climate control, Black headlining, Body colour bumpers, Body coloured door mirrors, CD player, Centre console with cupholders, Chrome exhaust tailpipes, Colour driver's information system display, Contrast stitching, DAB Digital radio, Diesel particulate filter, Driver/Front Passenger airbags, Electric adjustable heated door mirrors, Electric boot release, Electric front windows, Electro-mechanical PAS, Electromechanical parking brake, ESP + traction control, First aid kit, Front/rear floor mats, Front and rear curtain airbags, Front centre armrest, Front fog lights, Front head restraints, Front passenger airbag deactivation, Front sports seats including electric lumbar support, Heat insulated glass, Height adjustable front seatbelts, Illuminated door sills, Immobiliser, Isofix front passenger and rear seat preparation, Jack and tool kit, Keyless Start, Locking wheel bolts, MMI radio plus with 7" colour MMI screen and MMI controller, Mobile telephone preparation - bluetooth interface, Multi-Collision braking, Non Smokers pack, Perforated leather gearknob, Pre-

<b>Miles:</b>	59400
<b>Fuel Type:</b>	Diesel
<b>Transmission:</b>	Automatic/Other
<b>Colour:</b>	White
<b>Engine Size:</b>	2967
<b>Tax Band:</b>	Petrol/Diesel (£190 p/a)
<b>Body Style:</b>	Coupe
<b>Insurance group:</b>	43E
<b>Reg:</b>	VIB164

### Technical Specs

DIMENSIONS	
<b>Length:</b>	4673mm
<b>Width:</b>	1846mm
<b>Height:</b>	1371mm
<b>Seats:</b>	4
<b>Luggage Capacity (Seats Up):</b>	465L
<b>Gross Weight:</b>	2165KG
<b>Max. Loading Weight:</b>	505KG
PERFORMANCE & ECONOMY	
<b>Fuel Consum. (Urban Cold):</b>	44.8MPG
<b>Fuel Consum. (Extra Urban):</b>	56.5MPG
<b>Fuel Consum. (Combined):</b>	51.4MPG
<b>Fuel Tank Capacity:</b>	58L
<b>Number Of Gears:</b>	8 SPEED
<b>Top Speed:</b>	155MPH
<b>Acceleration 0-100 km/h:</b>	5.2s
<b>Engine Power BHP:</b>	281.6BHP

sense city emergency braking system, Rain and light sensors, Rear centre armrest, Rear headrests, Remote central locking, SD card based satellite navigation system, Seatbelt warning, Service interval indicator, Side airbags, S Line body styling, S line sill plates, Space saver spare wheel, Split folding rear seat, Stainless steel pedals and foot rest, Thatcham category 1 alarm, Top tether anchor plate for isofix child seat, Twilight grey matt radiator grille in matt aluminium inlay, Twilight grey matt rear diffuser, Two SDXC card slots, Tyre pressure monitor, Voice control system, Warning triangle