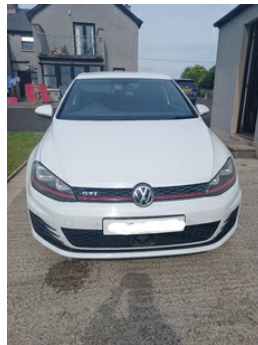


Volkswagen Golf 2.0 TSI GTI 3dr | Jan 2014**FULL HISTORY. MUCH LOVED.****£9,699** O.N.O

Rare 3 door model with full leather interior. Standard unmodified car. Full immaculate service history. Recent alloy refurb. Matching Michelin Pilot 5 tyres. Recent geometry check. Best available of this age. Sold with full year MOT.

Vehicle Features

'Lights On' warning buzzer, 3 point height adj front seatbelts + pretensioners, 3 rear 3 point seatbelts, 3 rear headrests, 12V socket in luggage compartment, 60/40 split folding rear seat, ABS, Air conditioning - 2 zone electronic climate control, Alarm with interior protection, Aluminium inlays, Ambient lighting, Anti-theft wheel bolts, Auto dimming rear view mirror, Automatic coming/leaving home lighting function, Automatic Distance Control with Front Assist, Automatic headlights, aux-in, Bag hook in luggage compartment, Bi-Xenon headlights and headlight washers with LED daytime running lights, Black headlining, Bluetooth Telephone preparation, Body colour bumpers, Body colour door handles, Body colour door mirrors with integral indicators, Boot lashing points, Brake pad wear indicator warning light, CD/MP3/WMA, Cherry red rear light cluster, Chrome-plated electric mirror adjustment switch surround, Chrome-plated electric window button surround, Chrome-plated light switch surround, Chrome air vent surrounds, Chrome trimmed front air intake surrounds, Chrome trimmed front fog light surrounds, cooled glovebox, Courtesy light delay, Cover for storage compartment in centre, Cruise control + speed limiter, Cyclone decorative inserts, DAB Digital radio, Door open warning reflectors, Driver/Front Passenger airbags, Driver/front

Miles:	89000
Fuel Type:	Petrol
Transmission:	Manual
Colour:	White
Engine Size:	1984
CO2 Emission:	139
Tax Band:	E (£190 p/a)
Body Style:	Hatchback
Insurance group:	29E
Reg:	Sc63htk

Technical Specs**DIMENSIONS**

Length:	4268mm
Width:	1799mm
Height:	1442mm
Seats:	5
Luggage Capacity (Seats Up):	380L
Gross Weight:	1820KG
Max. Loading Weight:	544KG

PERFORMANCE & ECONOMY

Fuel Consum. (Urban Cold):	37.7MPG
Fuel Consum. (Extra Urban):	55.4MPG
Fuel Consum. (Combined):	47.1MPG
Fuel Tank Capacity:	50L
Number Of Gears:	6 SPEED
Top Speed:	152MPH
Acceleration 0-100 km/h:	6.5s
Engine Power BHP:	217.2BHP

passenger seat height adjustment, Driver/Passenger whiplash optimised head restraints, Driver alert system, Driver and front passenger under seat drawer, Drivers knee airbag, Dusk sensor + auto driving lights, Dust/pollen filter, Easy entry slide seats (access to rear seats), Electrically adjustable and heated door mirrors, Electric folding door mirrors with puddle lamps, Electric front windows, Electronic engine immobiliser, Electronic parking brake with auto hold, Electronic tyre pressure monitoring, ESP with EDL + ASR, Exterior temperature gauge, Flat tyre indicator, Front + rear carpet mats, Front and rear curtain airbags, Front centre armrest with storage box and rear air vents, Front footwell illumination, Front passenger airbag deactivation, Front reading lights, Front seat back storage pockets, Front side airbags, Fuel cut off safety device, Gloss black decorative inserts in dash, Grab handles, HBA (Hydraulic Brake Assist), Heated rear windscreen, Heat insulated tinted glass 65% light absorbing from B pillar back, Height/reach adjust steering wheel, height adjustable and removable, Honeycomb radiator grille - black, illuminated, Illuminated door sills, Illuminated vanity mirrors, Instrument cluster in white, Isofix preparation for 2 rear child seats, LED fog lights, LED rear lights, LED rear number plate lights, Load through provision, Lockable, Lowered sports suspension, Luggage compartment cover, Luggage compartment lighting, MDI with USB/iPod connection cables, Multifunction computer, Multi function display colour screen, Multifunction leather steering wheel with leather gear knob/handbrake grip, PAS - speed related, Pre crash system, Rain sensor, Range adjustable headlights, Rear centre armrest with 2 cupholders, Rear cupholder, Rear diffuser, Rear reading lights, Rear roof spoiler, Rear windscreen washer and wiper with interval delay, Red brake calipers, Red radiator grille louvres, Remote central locking with 2 remote folding keys, Removable armrests, Rev counter, Reverse activated kerb-view adjustment on passenger's door mirror, Stainless steel pedals, Steel space saver spare wheel, Storage box in luggage compartment, Storage compartment in roof console with cover, Storage compartments in doors, Trip and service interval display, Twin exhaust tailpipe, Ultrasonic front and rear optical and audible parking sensors, USB and SD card reader, Variable boot floor, Warning buzzer and light for front seatbelts unfastened, Warning triangle and first aid kit holder, White adjustable panel illumination, Windscreen wipers/ intermittent wipe + 4 position delay