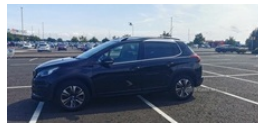


Peugeot 2008 1.2 PureTech Allure 5dr | Sep 2017

£6,995



Peugeot 2008 Allure
2017
1.2l Petrol
Manual
Black
2 owners from new
2 Keys
7 months MOT
Very comfortable to drive
Clean inside and out
HPI check completed
Excellent Condition

Miles:	72200
Fuel Type:	Petrol
Transmission:	Manual
Colour:	Black
Engine Size:	1200
CO2 Emission:	114
Tax Band:	Petrol/Diesel (£190 p/a)
Body Style:	Sport utility vehicle
Reg:	Bsz2777

Technical Specs

DIMENSIONS	
Length:	4159mm
Width:	1829mm
Height:	Not Availablemm
Seats:	5
Luggage Capacity (Seats Up):	360L
Gross Weight:	1590KG
Max. Loading Weight:	545KG
PERFORMANCE & ECONOMY	
Fuel Consum. (Urban Cold):	47.1MPG
Fuel Consum. (Extra Urban):	65.7MPG
Fuel Consum. (Combined):	57.6MPG
Fuel Tank Capacity:	50L
Number Of Gears:	5 SPEED
Top Speed:	105MPH
Acceleration 0-100 km/h:	13.5s
Engine Power BHP:	80.5BHP

Vehicle Features

1/3 to 2/3 split folding rear seats, 3 rear 3 point seatbelts, 3 rear head restraints, 4 speakers + 2 tweeters, 15" steel spare wheel, 16" Aquila alloy wheels, ABS/EBFD/EBA, Apple car play/Android Auto, Automatic activation of hazard warning lights, Automatic lights and wipers, Auxiliary socket for external device, Auxilliary 12V power socket, Bluetooth system, Body colour bumpers, Child safety lock, Chrome front fog light surround, Colour coded door handles, Colour coded door mirrors, Cornering front fog lights, Cruise control + speed limiter, DAB Digital radio, Driver/passenger sunvisors and vanity mirrors, Driver and passenger airbags, Driver seat height adjust, Dual zone automatic air conditioning, Electric folding door mirrors, Electric operated/heated door mirrors, Electrochrome rear view mirror, EPAS, ESP, External temperature gauge, Follow me home headlights, Front and rear curtain airbags, Front head restraints, Front passenger seat height adjust, Front side airbags, Gear shift indicator, Grip control, Height/reach adjust steering wheel, ISOFIX on outer rear seats, Leather and chrome gear knob, Leather steering wheel, LED daytime running lights, LED rear lights, Mirror link, One touch electric front/rear windows, Passenger airbag deactivation system, Radiator grille with bright chrome surround and bright chrome bars, Rear parking aid, Rear sports spoiler, Rear wash/wipe, Refrigerated glovebox, Remote central locking + deadlocks, Roof bars, Seatbelt warning lamp and buzzer, Service interval indicator, Steering wheel mounted remote controls, Thatcham Cat 2 engine immobiliser, Tinted rear windows, Touch screen display, Trip computer, Tyre pressure sensor, Ultrasonic alarm, USB interface, Wheel arch extensions