

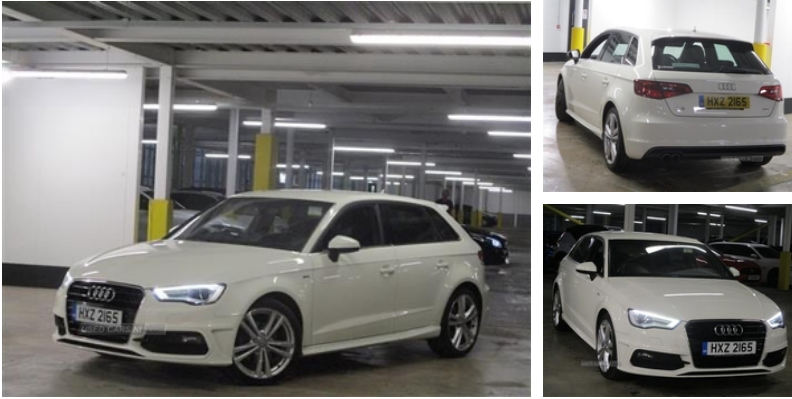


2A Cadger Road Carryduff, Northern Ireland, Carryduff, BT8 8AU
lakeside autos: 028 9081 5082

Audi A3 2.0 TDI S Line 5dr | 2015

2.0 TDI 150BHP , TIMING BELT DONE . FLAT BOTTOM WHEEL .

£9,995



Miles:	75000
Fuel Type:	Diesel
Transmission:	Manual
Colour:	White
Engine Size:	1968
Tax Band:	B (£20 p/a)
Body Style:	Hatchback
Insurance group:	24E
Reg:	HXZ2165

- Heated seats
- Climate control
- Multi function flat bottom steering wheel
- Includes full years MOT

Vehicle Features

3 adjustable rear headrests, 3 point seatbelts on all seats, 3 spoke flat bottomed S Line multifunction steering wheel, 4 lashing points to secure luggage, 60/40 split folding rear seat, ABS/EBD, Active bonnet, Active front headrests, Adjustable front armrest, Aluminium air vent surrounds, Aluminium door sill trims, Aluminium side window trim, Aluminium trim elements, Anti-theft wheel bolts, ASR, Audi drive select, Audi music interface, Black cloth headlining, Body colour bumpers, Body colour door mirrors with integral indicators, Body colour roof spoiler, Chrome exhaust tailpipes, Coat hooks on both sides, Colour driver's information system display, Cup holders, Curtain airbags, DAB Digital radio, Daytime running lights, Diesel particulate filter, Door sill trims with S line logo, Driver/Front Passenger airbags, Driver/passenger sunvisors, Driver and passenger side airbags, Driver seat undertray, Drivers knee airbag, Dual zone electronic climate control, EDL, Electromechanical parking brake, ESC - Electronic Stability Control + traction control, Front/rear floor mats, Front and rear electric windows, Front and rear interior lights with delay, Front fog lights, Front passenger airbag deactivation, Headlight washers, Heated rear window, Heated windscreen washer jets, Height/depth adjustable steering column, Height adjustable front

Technical Specs

DIMENSIONS	
Length:	4310mm
Width:	1785mm
Height:	1425mm
Seats:	5
Luggage Capacity (Seats Up):	380L
Gross Weight:	1865KG
Max. Loading Weight:	560KG
PERFORMANCE & ECONOMY	
Fuel Consum. (Urban Cold):	55.4MPG
Fuel Consum. (Extra Urban):	76.3MPG
Fuel Consum. (Combined):	67.3MPG
Fuel Tank Capacity:	50L
Number Of Gears:	6 SPEED
Top Speed:	135MPH
Acceleration 0-100 km/h:	8.6s
Engine Power BHP:	147.5BHP

USED CARS NI

seats, High gloss black fog light surround, High gloss black front grille, Illuminated glovebox, Illuminated luggage compartment, ISOFIX child seat preparation+airbag deactivation, Jack and tool kit, Low washer fluid indicator, Manual rear child locks, Matt brushed aluminium inlays, Perforated leather gearknob, Rear wiper, Remote control central locking, Removable rear parcel shelf, Seatbelt warning, Service interval indicator, S Line body styling, Space saver spare wheel, Storage and luggage pack - A3/RS3, Storage compartment in centre console, Storage compartments in doors, Thatcham category 1 alarm + immobiliser, Twin exhaust tailpipe, Tyre pressure monitor, Variable boot floor, Voice control system, Warning triangle and first aid kit