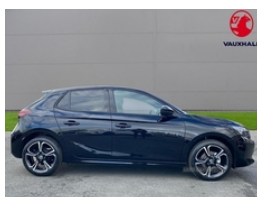
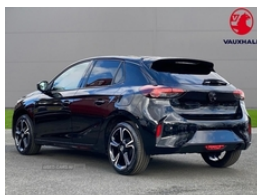


Vauxhall Corsa 1.2 Turbo Gs 5Dr | Jul 2024

100HP TURBO - DELIVERY MILES

£17,999



Miles:	1
Fuel Type:	Petrol
Transmission:	Manual
Colour:	Black
Tax Band:	Petrol/Diesel (£190 p/a)
Body Style:	Hatchback
Insurance group:	19E
Reg:	FMZ3462

ONLY ONE AVAILABLE OF THE 100HP TURBO GS

Vehicle Features

2 keys one folding with integral remote, 3 bench rear seats in 2nd row, 3 rear 3 point seatbelts, 3 spoke, 3rd brake light, 4 speed fan with illuminated controls, 4 way manual co-driver seat reach fore/aft, 6 way manual adjustable driver seat height up/down, 7 inch digital instrument cluster display, 12V power sockets, 60/40 split folding rear seat, airborne particles and pollen, Air Conditioning, Alloy Wheels, AM/FM stereo radio, Anti-lock braking system (ABS), Auto lights, Automatic emergency braking with pedestrian detection, Automatic headlight control system, Auto tele unit 3S vehicle communication system, backrest upright/recline, backrest upright/recline, Black DLO, Black door mirror housings, Black Griffin logo and vizor frame, Black headliner, Black lower side window mouldings, Bluetooth A2DP audio streaming, Bluetooth Connection, Bluetooth Music Streaming, Body colour door handles, Body colour front and rear bumpers, Bonnet/headlight/wiper structure, Breakdown call (b-call), Cabin particulate filter - removes dust, Central fascia display with digital clock, Compatible With Apple Carplay or Android Auto, Cornering brake control, Cruise control with intelligent speed limiter, DAB Digital radio, Dark tinted rear side windows + tailgate window, Deactivation switch for front passenger's airbag, Drag torque control, Driver/passenger sunvisors with vanity mirrors + covers, Driver and front passenger airbags, Driver drowsiness alert system, E-call, EBD - Electronic brakeforce distribution, Electrical child lock system in rear door latch, Electrically adjustable and heated door mirrors, Electrically folding door mirrors, Electrically operated front and rear windows

Technical Specs

DIMENSIONS

Length:	4060mm
Width:	1745mm
Height:	1433mm
Seats:	5
Luggage Capacity (Seats Up):	309L
Gross Weight:	1620KG
Max. Loading Weight:	520KG

PERFORMANCE & ECONOMY

Fuel Consum. (Combined):	55.4MPG
Fuel Tank Capacity:	45L
Number Of Gears:	6 SPEED
Top Speed:	120MPH
Acceleration 0-100 km/h:	9.9s
Engine Power BHP:	99.2BHP

with safety auto reverse and one touch up/down facility,
Electrochromic automatic anti-dazzle rear view mirror,
Electronically protected audio equipment, Electronic climate control (ECC), Electronic returnless fuel system, Electronic Stability Programme (ESP), Emergency brake assist, Engine deadlock and immobiliser, Engine oil life indicator, flat bottomed, Flexible roof mounted aerial, Forward collision alert, Four adjustable facia vents, Freewheeling door locks, Front and rear parking sensors, Front camera system, Front centre armrest with storage, Front cupholder, Front headrests, Front seatbelt unfastened audible warning and warning light, front seat side impact airbags, full size curtain airbags, Glazed tailgate and heated rear window with wash/wipe facility, Hazard warning lights, Headlamps for left side traffic, Height adjustable head restraints, High beam assist, High gloss black finish B pillar, Hill hold and start system, Illuminated glovebox with lid, Instrumentation - Speedometer, Interior courtesy light, Internal chrome door handles, ISOFIX child seat mountings incorporating top tether anchor points located on second row rear seats, Lane departure warning, Lane keep assist, leather effect steering wheel with satin chrome effect bezel, LED boot light, LED daytime running lights, LED front fog lights, LED Headlights, LED tail lamp, Lights on audible warning, Locking wheel nuts, low fuel gauge warning light + water temperature gauge warning light, Manual handbrake, Multi function trip computer, outside air temperature and audio information, Petrol Particulate Filter, phone and cruise controls, Polyurethane gear knob/lever, Rain sensitive windscreen wipers, RDS with traffic programme, Reach and rake adjustable steering column, reach fore/aft, Rear cupholder, Rear fog lamp, Rear headrests, Rear reversing lights, Rear side wing doors, Rear wiper, Remote control central locking, Remote control security alarm system, Remote locking fuel filler flap, rev counter, Right hand drive (RHD), Seatbelt pretensioners, Service indicator, Side blind spot alert, Single dome lamp with dual front reading lamps, Single front passenger seat, Single tone horn, Six speakers, Smartphone projection, Solar heat absorbing windscreen, Speed sensitive power steering, Speed sign recognition, Sports front and rear body styling for upper and lower bumper design, Sports style front seats, Start/stop system, Steering column lock, Steering wheel audio, Straight line stability control, Traction control, Two litre open door pockets, Two speed windscreen wipers with variable intermittent wipe, Tyre deflation detection system, Tyre pressure monitoring system, Under body shield for aero, USB type C port, Vauxhall connect box, Visible vehicle identification number, Windscreen and side window demist vents, Wireless Apple CarPlay/Android Auto

