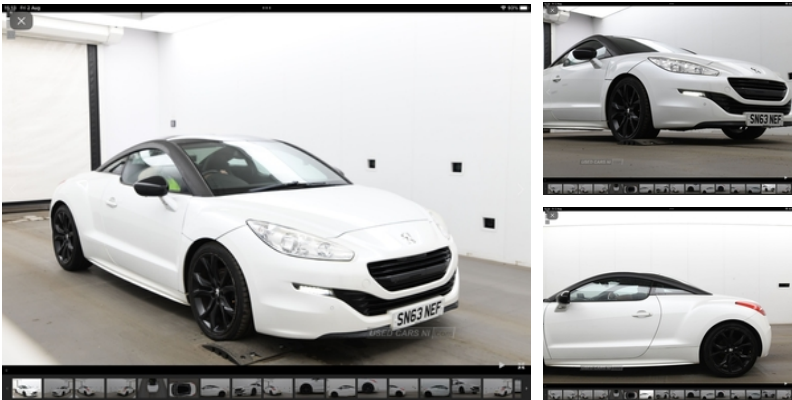


## Peugeot RCZ 1.6 THP Magnetic 2dr | Sep 2013 VERY MILES SPECIAL EDT MAGNETIC VERY HIGH SPEC

# £6,450



stunning peugoet rcz limited edition magnetic model face lift model with nav different leather big black wheels stunning car coming in from England more photos to follow trade in welcome top price payed for your old car nil deposit fiance tel 07950 540047 anytime

### Vehicle Features

2 rear head restraints, 6 speakers (4 speakers/2 tweeters), ABS/EBFD/EBA, Analogue clock, Approach lamps, Automatic headlights + automatic windscreen wipers, Bench folding rear seat, Black pack - RCZ, Body coloured bumpers, Carpet mats, Cruise control + speed limiter, Driver and passenger airbags, Driver seat height adjust, Dual climate control air conditioning system, Electrically adjustable front seats, Electric front windows + one touch + anti-pinch, Electric heated folding door mirrors, Electrochrome rear view mirror, ESP and ASR traction control with deactivation switch, Follow me home headlights, Front centre armrest, Front fog lights, Front head restraints, Front Parking Aid, Front side airbags, Heated front seats, Height/reach adjust steering wheel, Immobiliser, Interior Sports Kit - RCZ, Internally operated central locking button, Isofix location points on rear seats, Leather upholstery, Locking wheel nuts, Lumbar adjustment for front seats, Passenger airbag deactivate switch, Peugeot connect navigation with radio/CD, Peugeot connect SOS and assistance, Peugeot connect with USB and bluetooth, Rear centre armrest, Rear parking aid, Rear spoiler, Remote central locking + deadlocks, Sports front seats, Thatcham cat 1 ultrasonic alarm, Tinted rear windows, Trip computer, Twin sports exhaust, Tyre puncture repair kit, Variable power steering

<b>Miles:</b>	57000
<b>Fuel Type:</b>	Petrol
<b>Transmission:</b>	Manual
<b>Colour:</b>	White
<b>Engine Size:</b>	1598
<b>CO2 Emission:</b>	149
<b>Tax Band:</b>	F (£210 p/a)
<b>Body Style:</b>	Coupe
<b>Insurance group:</b>	30E
<b>Reg:</b>	SN63NEF

### Technical Specs

#### DIMENSIONS

<b>Length:</b>	4290mm
<b>Width:</b>	1845mm
<b>Height:</b>	1352mm
<b>Seats:</b>	4
<b>Luggage Capacity (Seats Up):</b>	309L
<b>Gross Weight:</b>	1726KG
<b>Max. Loading Weight:</b>	332KG

#### PERFORMANCE & ECONOMY

<b>Fuel Consum. (Urban Cold):</b>	31.7MPG
<b>Fuel Consum. (Extra Urban):</b>	55.4MPG
<b>Fuel Consum. (Combined):</b>	44.1MPG
<b>Fuel Tank Capacity:</b>	55L
<b>Number Of Gears:</b>	6 SPEED
<b>Top Speed:</b>	133MPH
<b>Acceleration 0-100 km/h:</b>	8.3s
<b>Engine Power BHP:</b>	154.2BHP

