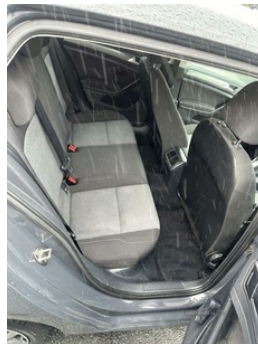
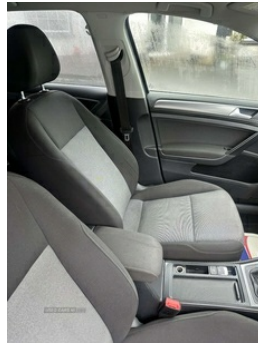


## Volkswagen Golf 1.6 TDI 105 S 5dr | Jun 2015

**£3,400** O.N.O



<b>Miles:</b>	189000
<b>Fuel Type:</b>	Diesel
<b>Transmission:</b>	Manual
<b>Colour:</b>	Grey
<b>Engine Size:</b>	1598
<b>CO2 Emission:</b>	99
<b>Tax Band:</b>	A (£0 p/a)
<b>Body Style:</b>	Hatchback
<b>Reg:</b>	Vn15HFW

### Technical Specs

DIMENSIONS	
<b>Length:</b>	4255mm
<b>Width:</b>	1799mm
<b>Height:</b>	1452mm
<b>Seats:</b>	5
<b>Luggage Capacity (Seats Up):</b>	380L
<b>Gross Weight:</b>	1800KG
<b>Max. Loading Weight:</b>	550KG
PERFORMANCE & ECONOMY	
<b>Fuel Consum. (Urban Cold):</b>	61.4MPG
<b>Fuel Consum. (Extra Urban):</b>	85.6MPG
<b>Fuel Consum. (Combined):</b>	74.3MPG
<b>Fuel Tank Capacity:</b>	50L
<b>Number Of Gears:</b>	5 SPEED
<b>Top Speed:</b>	119MPH
<b>Acceleration 0-100 km/h:</b>	10.7s
<b>Engine Power BHP:</b>	103.3BHP

Full years test

Just serviced. Ready to go phone edel on +44 7484 772657

### Vehicle Features

'Lights On' warning buzzer, 3 point height adj front seatbelts + pretensioners, 3 rear 3 point seatbelts, 3 rear headrests, 3 spoke steering wheel, 5.8" colour touch screen, 8 speakers, 60/40 split folding rear seat, ABS, aux-in, Bag hook in luggage compartment, Black front air intake and radiator grilles, Bluetooth Telephone preparation, Body colour bumpers, Body colour door handles, Body colour door mirrors with integral indicators, Boot lashing points, Brake pad wear indicator warning light, CD/MP3/WMA, Child locks on rear doors, Chrome air vent surrounds, cooled glovebox, Courtesy light delay, Cover for storage compartment in centre, DAB Digital radio, Dark rhodium decorative inserts in dash, Daytime running lights, Diesel particulate filter, Door open warning reflectors, Driver/Front Passenger airbags, Driver/front passenger seat height adjustment, Driver/Passenger whiplash optimised head restraints, Drivers knee airbag, Dust/pollen filter, Electrically adjustable and heated door mirrors, Electric front windows, Electronic engine immobiliser, Electronic parking brake with auto hold, Electronic tyre pressure monitoring, ESP with EDL + ASR, Exterior temperature gauge, Flat tyre indicator, Front and rear

curtain airbags, Front centre armrest with storage box and rear air vents, Front passenger airbag deactivation, Front reading lights, Front side airbags, Fuel cut off safety device, Grab handles, Green tinted heat insulating glass, HBA (Hydraulic Brake Assist), Heated rear windscreen, Height/reach adjust steering wheel, height adjustable and removable, illuminated, Illuminated vanity mirrors, Instrument cluster in white, Isofix preparation for 2 rear child seats, Lockable, Luggage compartment cover, Luggage compartment lighting, MDI with USB/iPod connection cables, Multifunction computer, PAS - speed related, Range adjustable headlights, Rear cupholder, Rear diffuser, Rear roof spoiler, Rear windscreen washer and wiper with interval delay, Remote central locking with 2 remote folding keys, Rev counter, Salt cloth upholstery, Steel space saver spare wheel, Storage compartments in doors, Trip and service interval display, USB and SD card reader, Variable boot floor, Warning buzzer and light for front seatbelts unfastened, Warning triangle and first aid kit holder, White adjustable panel illumination, Windscreen wipers/ intermittent wipe + 4 position delay