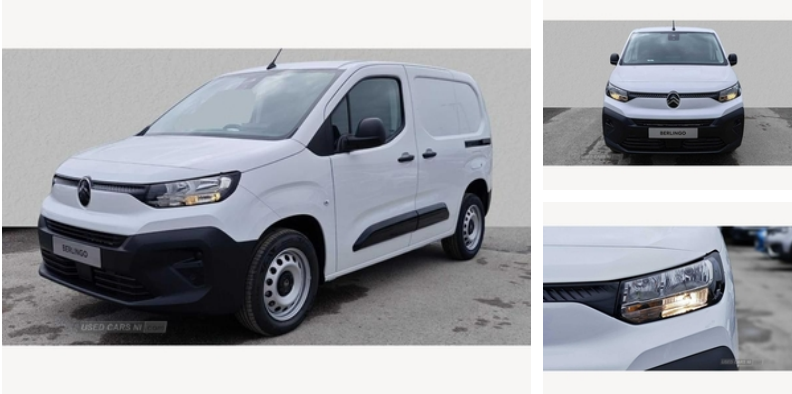


Citroen Berlingo 1.5 BlueHDi 100ps 1000kg Van Enterprise | Jun 2024

£17,895 + VAT

2 SEATS | PRE REG | DELIVERYMILES | NEW MODEL



Here we have for sale a delivery mileage pre-registered (New - registered June 2024 on a '24 plate) new shape Citroen Berlingo M Diesel 1000 1.5 BlueHdi 100 Enterprise Van in White. The specification includes Air conditioning, Bluetooth, Rear parking sensors and Single passenger seat. We have a number of these available.

Vehicle Features

4 boot load lashing points, 6 floor mounted load securing rings, 12 volt socket in dashboard, Auxilliary 12V power socket, Black door handles, Black door mirrors, Black front and rear bumpers, Black side rubbing strips, Citroen connect box with emergency and assistance system, Curitiba cloth upholstery, Curtain airbags, Dashboard mounted central locking push button and auto locking above 7mph, Door opening warning and audible lights on warning, Driver/passenger seatbelt unfastened warning, Driver attention alert, EBA and EBFD, Electrically adjustable door mirrors with temperature sensor, Electronic Stability Control and ABS with hill start assist, Engine deadlock immobiliser, Front/rear cupholders, Front door pockets with 1.5L bottle holder, Hard plastic floor protection in cabin, Height adjustable halogen headlights with integrated daytime running lights, High Beam Assist, High level third brake light, Lane keep assist, Left side sliding door, Lockable fuel cap, Multi-function trip computer, One touch open on drivers window, Overhead storage shelf in cabin, Reach and rake adjustable steering column, Rear parking sensor, Rear seat back table top, Remote control central deadlocking, Rev counter with maintenance and gear efficiency indicators (GEI), Side airbags, Tyre pressure monitor, Under front seat storage drawer, Visible VIN at

Miles:	300
Fuel Type:	Diesel
Transmission:	Manual
Colour:	Ice White
Engine Size:	1499
Tax Band:	Light goods vehicle (£335 p/a)
Body Style:	Van
Reg:	YD24NGB

Technical Specs

DIMENSIONS	
Length:	4403mm
Width:	1848mm
Height:	1860mm
Seats:	2
Gross Weight:	2370KG

PERFORMANCE & ECONOMY	
Fuel Consum. (Urban Cold):	57.6MPG
Fuel Consum. (Extra Urban):	70.6MPG
Fuel Consum. (Combined):	52.3MPG
Fuel Tank Capacity:	53L
Number Of Gears:	6 SPEED
Top Speed:	103MPH
Engine Power BHP:	100.6BHP

windscreen base