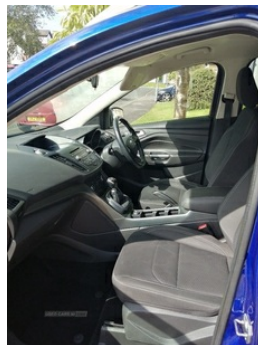


Ford Kuga 1.5 TDCi Zetec 5dr 2WD | Sep 2017

93K MILES, MOT MAY 25

£8,375 O.N.O



Lovely Driving Car
Full Service History
MOT until May 2025
Alloy Wheels
4 good tyres
Tow Bar

Roof rack bars and 2 x roof mounted bicycle racks as additional extras
2 Keys!

Vehicle Features

3 point seatbelts on all 3 rear seats, 6 speakers, 60/40 split/folding rear back and cushion, ABS/EBD, Auxiliary power socket in luggage area, Auxiliary socket for external device, Body colour bumpers, Body colour rear spoiler, Centre console with stowage tray/bottle holder/CD stowage/front and rear 12V power point, Cloth upholstery, Cruise control + speed limiter, DAB radio/CD with SYNC, Driver/passenger front seatback pockets, Driver/passenger seats fore/aft adjustment, Driver and passenger airbags, Driver and passenger side airbags, Driver seat lumbar adjustment, Electrically heated door mirrors, Electric traction assist system, EPAS, ESP+EBA, Footwell courtesy lights front and rear, Front/rear reading lights, Front and rear curtain

| | |
|----------------------|--------------------------|
| Miles: | 93000 |
| Fuel Type: | Diesel |
| Transmission: | Manual |
| Colour: | Blue |
| Engine Size: | 1499 |
| CO2 Emission: | 115 |
| Tax Band: | Petrol/Diesel (£190 p/a) |
| Body Style: | Sport utility vehicle |
| Reg: | mrz9010 |

Technical Specs

| DIMENSIONS | |
|-------------------------------------|--------|
| Length: | 4531mm |
| Width: | 1838mm |
| Height: | 1689mm |
| Seats: | 5 |
| Luggage Capacity (Seats Up): | 456L |

PERFORMANCE & ECONOMY

| | |
|------------------------------------|---------|
| Fuel Consum. (Urban Cold): | 58.9MPG |
| Fuel Consum. (Extra Urban): | 67.3MPG |
| Fuel Consum. (Combined): | 64.2MPG |
| Fuel Tank Capacity: | 60L |
| Number Of Gears: | 6 SPEED |
| Top Speed: | 108MPH |
| Acceleration 0-100 km/h: | 12.7s |
| Engine Power BHP: | 118BHP |

airbags, Front floor mats, Front head restraints, Front overhead courtesy lights with theatre style dimming and delay, Hill start assist, Immobiliser, Intelligent Protection System (IPS), Isofix system on outer rear seats, Keyless Start, Leather gearknob, Leather steering wheel, Locking wheel nuts, Manual air conditioning, Mini steel spare wheel, Power front and rear windows, Quickclear heated windscreen, Reach + rake adjustable steering column, Rear diffuser, Rear head restraints, Remote audio controls on steering wheel, Remote central locking, Sports style front seats, Stowage unit in upper instrument panel, Tailgate wash/wipe, Thatcham Cat.1 alarm, Tie down hooks, Tonneau cover, Trip computer, Twin exhaust pipes, Tyre pressure monitoring system, USB connection, Variable intensity instrument illumination, voice control + emergency assist