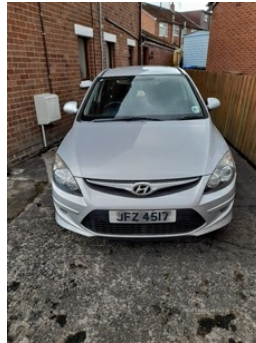


## Hyundai i30 1.6 CRDi Comfort 5dr | Apr 2011

GOOD EXAMPLE, LOW MILES FOR AGE.

# £1,650



Great example, first to see will buy.

### Vehicle Features

3x3 point rear seatbelts, 6 speakers, 12V power outlets, 16" alloy wheels, 60/40 split folding flat to floor rear seats, ABS + EBD + EBA, Active front headrests, Adjustable intermittent wipers, Air conditioning, Alarm, Automatic door locking, Body colour door mirrors and handles, Body coloured bumpers, Brake assist function, Childproof rear door locks, Cloth upholstery, Cool box in glove compartment, Curtain airbags, Deadlocks, Diesel particulate filter, Drive away door locking, Driver's seat height adjuster, Driver/Front Passenger airbags, Driver/passenger sunvisors and vanity mirrors, Driver seat lumbar adjustment, Electric adjustable heated door mirrors, Electronic headlamp levelling, Electronic Stability Programme, Engine immobiliser, Fasten seatbelt reminder, Folding key, Follow me home headlights, Front and rear door pockets, Front and rear electric windows, Front cupholders, Front fog lights, Front map reading lights, Front seatbelt pretensioners + load limiters, Front side airbags, Fully adjustable front head restraints, Heated rear window, Height/reach adjustable steering column, Height adjustable front seatbelts, Height adjustable rear head restraints, Illuminated ashtray, Illuminated cigarette lighter, Instrument panel illumination control, Interior light, Isofix rear

|                         |             |
|-------------------------|-------------|
| <b>Miles:</b>           | 109000      |
| <b>Fuel Type:</b>       | Diesel      |
| <b>Transmission:</b>    | Manual      |
| <b>Colour:</b>          | Silver      |
| <b>Engine Size:</b>     | 1582        |
| <b>CO2 Emission:</b>    | 119         |
| <b>Tax Band:</b>        | C (£35 p/a) |
| <b>Body Style:</b>      | Hatchback   |
| <b>Insurance group:</b> | 17E         |
| <b>Reg:</b>             | Jfz4517     |

### Technical Specs

#### DIMENSIONS

|                                     |        |
|-------------------------------------|--------|
| <b>Length:</b>                      | 4280mm |
| <b>Width:</b>                       | 1775mm |
| <b>Height:</b>                      | 1480mm |
| <b>Seats:</b>                       | 5      |
| <b>Luggage Capacity (Seats Up):</b> | 340L   |
| <b>Gross Weight:</b>                | 1820KG |
| <b>Max. Loading Weight:</b>         | 425KG  |

#### PERFORMANCE & ECONOMY

|                                    |         |
|------------------------------------|---------|
| <b>Fuel Consum. (Urban Cold):</b>  | 53.3MPG |
| <b>Fuel Consum. (Extra Urban):</b> | 68.9MPG |
| <b>Fuel Consum. (Combined):</b>    | 62.8MPG |
| <b>Fuel Tank Capacity:</b>         | 53L     |
| <b>Number Of Gears:</b>            | 6 SPEED |
| <b>Top Speed:</b>                  | 117MPH  |
| <b>Acceleration 0-100 km/h:</b>    | 11.5s   |
| <b>Engine Power BHP:</b>           | 114BHP  |

child seat fastenings, Leather gear knob, Leather steering wheel, Lockable glovebox, Locking wheel nuts, Luggage compartment lighting, Luggage hooks, Luggage net, One touch open on front windows, Overhead console with sunglasses holder, PAS, Passenger airbag deactivate switch, Radio/CD with MP3 and WMA compatibility, Rear spoiler, Rear wash/wipe, Remote boot release, Remote central locking, Remote fuel flap release, Roof mouldings for roof rack, Seat back pockets, Speed sensitive front wipers + wash/wipe, Steering wheel mounted audio controls, Temporary spare wheel, Tinted glass, Traction control, Trip computer, Underfloor tool tray, USB/iPod/auxiliary input connections