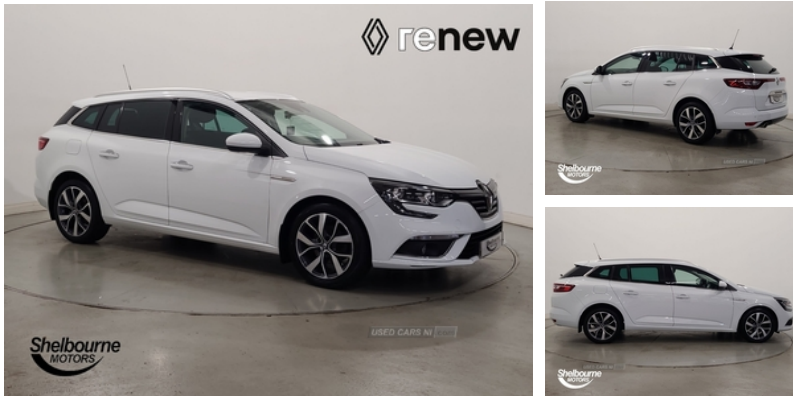


## Renault Megane 1.5 dCi Dynamique Nav 5dr | 2018

# £9,750

### RENAULT MEGANE 1. 5 DCI DYNAMIQUE NAV 5DR



Renault Megane 1.5 dCi Dynamique Nav 5dr

### Vehicle Features

3 height adjustable rear headrests, 3 seat rear bench, 4x35W RDS radio/CD, 4x35W RDS radio/CD, 60/40 split folding rear seat, ABS/EBD, Accessory power point, Adjustable dashboard illumination, Air recirculation system, Ambient lighting, Anti-drill door locks/ignition barrel, Anti-lock Braking System/EBD, Arkamys 3D sound with bluetooth and multifunction tunepoint, Arkamys 3D sound with Bluetooth and multifunction tunepoint, Automatic headlights and windscreen wipers, Aux-in socket, Body colour bumpers, Body colour door handles, Body coloured door mirrors, Cruise control + speed limiter, DAB Digital radio, Door/boot open warning light, Drive mode selector, Driver's seat with lumbar adjustment, Driver/front passenger seat height adjustment, Driver/passenger 2 stage auto adaptive airbags, Driver/passenger reading lights, Dual zone climate control, Eco mode, Electric adjustable/heated/folding door mirrors, Electronic parking brake, Emergency brake assist, ESP + ASR traction control + CSV understeer control, Exterior temperature gauge, Fingertip controls for audio system, Front and rear curtain airbags, Front and rear outer seat belt pre-tensioners, Front and rear towing rings, Front centre armrest with storage, Front fog lights, Front lateral airbags, Fully adjustable front headrests, Hands free Renault card, Heated rear windscreen, Height/reach adjust steering wheel, Height adjustable front seatbelts, Hill start assist, Illuminated boot, Insurance approved Cat 1 alarm system, Insurance Approved Immobiliser, Integrated fuel filler cap, Interior courtesy light operated by all doors, Isofix system on

|                         |                          |
|-------------------------|--------------------------|
| <b>Miles:</b>           | 43646                    |
| <b>Fuel Type:</b>       | Diesel                   |
| <b>Transmission:</b>    | Manual                   |
| <b>Colour:</b>          | White                    |
| <b>Engine Size:</b>     | 1461                     |
| <b>Tax Band:</b>        | Petrol/Diesel (£190 p/a) |
| <b>Body Style:</b>      | Estate                   |
| <b>Insurance group:</b> | 15E                      |
| <b>Reg:</b>             | KGZ7373                  |

### Technical Specs

| DIMENSIONS                          |          |
|-------------------------------------|----------|
| <b>Length:</b>                      | 4626mm   |
| <b>Width:</b>                       | 1814mm   |
| <b>Height:</b>                      | 1457mm   |
| <b>Seats:</b>                       | 5        |
| <b>Luggage Capacity (Seats Up):</b> | 580L     |
| <b>Gross Weight:</b>                | 1914KG   |
| <b>Max. Loading Weight:</b>         | 462KG    |
| PERFORMANCE & ECONOMY               |          |
| <b>Fuel Consum. (Urban Cold):</b>   | 68.9MPG  |
| <b>Fuel Consum. (Extra Urban):</b>  | 80.7MPG  |
| <b>Fuel Consum. (Combined):</b>     | 76.4MPG  |
| <b>Fuel Tank Capacity:</b>          | 47L      |
| <b>Number Of Gears:</b>             | 6 SPEED  |
| <b>Top Speed:</b>                   | 116MPH   |
| <b>Acceleration 0-100 km/h:</b>     | 11.6s    |
| <b>Engine Power BHP:</b>            | 108.6BHP |

outer rear seats, Leather steering wheel, LED daytime running lights, Multi function trip computer, Passenger airbag deactivation system, Passenger sunvisor with illuminated vanity mirror, Pollen filter, Power front and rear windows, RAID (Renault Anti-Intruder Device), RAID (Renault Anti-Intruder Device) with automatic door locking, Rear courtesy lights, Rear passenger heating ducts, Seatbelt warning, Superlocking, Synthetic leather/cloth upholstery, TFT display screen, Three 3 point rear seatbelts, Traffic sign recognition, Tyre pressure monitor, USB socket, Variable PAS, Variable Power Assisted Steering, Visio system - lane departure and high beam assist