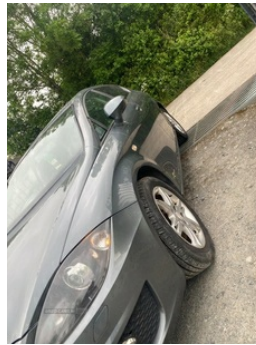


## Seat Leon 1.6 TDI CR Ecomotive SE Copa 5dr | Jan 2012

# £3,750

**FREE ROAD TAX, XENON HEADLIGHTS, HEATED SEATS, LOW MILES**



<b>Miles:</b>	92197
<b>Fuel Type:</b>	Diesel
<b>Transmission:</b>	Manual
<b>Colour:</b>	Grey
<b>Engine Size:</b>	1598
<b>CO2 Emission:</b>	99
<b>Tax Band:</b>	A (£0 p/a)
<b>Body Style:</b>	Hatchback
<b>Reg:</b>	YF61FFG

### Technical Specs

DIMENSIONS	
<b>Length:</b>	4315mm
<b>Width:</b>	1768mm
<b>Height:</b>	1455mm
<b>Seats:</b>	5
<b>Luggage Capacity (Seats Up):</b>	341L
<b>Gross Weight:</b>	1820KG
<b>Max. Loading Weight:</b>	495KG

### PERFORMANCE & ECONOMY

<b>Fuel Consum. (Urban Cold):</b>	60.1MPG
<b>Fuel Consum. (Extra Urban):</b>	83.1MPG
<b>Fuel Consum. (Combined):</b>	74.3MPG
<b>Fuel Tank Capacity:</b>	55L
<b>Number Of Gears:</b>	5 SPEED
<b>Top Speed:</b>	118MPH
<b>Acceleration 0-100 km/h:</b>	11.5s
<b>Engine Power BHP:</b>	103.3BHP

Very little use since last MOT as got new car.

Touch screen satellite navigation

Bluetooth

CD player

USB ports

Xenon headlights

Heated seats

Rear parking sensors

New EGR and cooler

New clutch master and slave cylinder

New battery

Free tax

MOT until 19th October 2024

2 brand new tyres

Car has been well looked after, lovely to drive.

### Vehicle Features

'Lights On' warning buzzer, 2 rear cupholders, 3 Button folding key with remote window opening/closing function, 3 point rear seatbelts x3, 8 speakers, 12V power point front, 16" Endurance alloy wheels, ABS + TCS (with TCS deactivation), Active head

restraints, Auto-lock/unlock doors, Auxiliary input socket, Body colour door handles, Body coloured bumpers, Body coloured door mirrors, Boot open warning light, Boot storage net, Child proof door locks, Chromed centre radiator grille surround, Combined ipod/USB connection, Coming home headlight function, Convenience pack - Leon, Cornering front fog lights, Cruise control, Curtain airbags, Dark green tinted rear windows, Diesel particulate filter, Digital clock and outside temperature display, Driver/Front Passenger airbags, Driver seat height/lumbar adjust, Dual zone climate control, Dust/pollen filter, Dynamic steering response (DSR), Electric adjustable/heated/folding door mirrors, Electric front/rear windows with one touch/anti pinch, Electric headlamp adjustment, Electro - mechanical power assisted steering, ESP + EBA (with ESP deactivation), Fasten seatbelt reminder, Front + rear carpet mats, Front adjustable head restraints, Front and rear courtesy lights with delay, Front cupholder, Front map reading lights, Front seatbelt pretensioners, Front side airbags, Height/reach adjust steering wheel, Height adj front seatbelts/belt force limiters, Hill hold control, Honeycomb front grille, Illuminated boot, Illuminated glovebox, Immobiliser, Isofix child seat preparation, Leather steering wheel and gear knob, Locking wheel bolts, Low fuel warning light, Passenger airbag deactivation system, Passenger seat back pocket, Passenger seat height adjuster, Passenger seat lumbar adjust, Radio/CD + MP3, Rear head restraints, Rear reading lights, Rear wash/wipe, Remote central locking + deadlocks, Remote fuel flap release, SEAT logo boot release, Seat media pack - Leon, Second remote key, Service interval indicator, Split folding rear seat, Steering wheel mounted audio controls, Storage under front passenger seat, Sunvisors with illuminated vanity mirrors (drivers with covered mirror + card holder), Tinted windows, Trip computer, Tyre pressure monitoring system, Tyre repair kit, Volumetric alarm with back up horn, White instrument lighting with brightness control