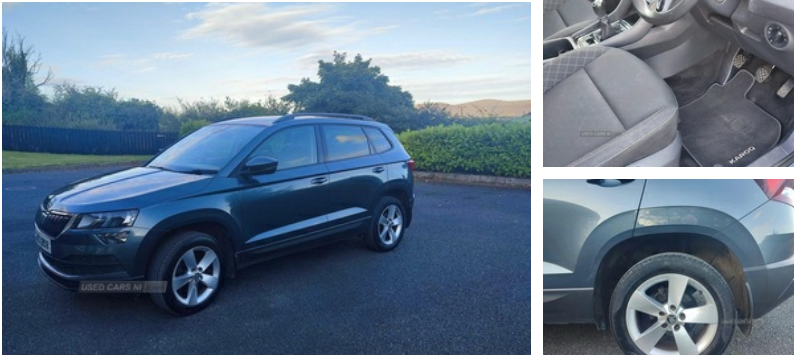


Skoda Karoq 1.0 TSI SE 5dr | Nov 2019**GREAT FAMILY SUV****£13,599****Vehicle Features**

1.5 litre bottle holders in driver and front passenger door panels, 2 Folding hooks and nets in boot, 2 Front readings lights for driver and passenger, 3 rear height adjustable headrests, 4 foldable roof handles with rear coat hooks, 4 lashing points on luggage floor, 12V socket in boot, 12v socket in front centre armrest with storage compartment and rear air vents, Acoustic glass, Aero front windscreen wipers with intermittent function, Airbags - Front side, Alarm with interior monitoring, ASR, Automatic door unlocking in case of crash, Automatic fuel cut off in case of crash, Automatic headlight control system, Backrest release, back up horn and tilt sensor with safe function, Black electric window control buttons, Body colour door mirrors and handles, Body coloured bumpers, Cargo elements in boot, Chrome framed air vents, Chrome inner door handles, DAB radio with Bluetooth, Driver airbag, Driver alert system, Driver and passenger seats height adjust, Driver fatigue sensor, Driver profile selection, DSR, Dual zone climate control, EDS, Electrically adjustable heated folding and auto dimming door mirrors, Electric front and rear windows with child proof lock, Electro-mechanical PAS, Electronic engine immobiliser, Electronic parking brake with auto hold function, Emergency rear braking signal, ESC including ABS, Folding tables on the front seat backrests, Front assist radar scanning of the space in front of the car with automatic braking, Front seatback pockets, Full height hardboard side lining, HBA, head, Heated rear windscreen, Height/reach adjust steering wheel, Height adjustable front three point seats belts with tensioners, Hill hold control, Ice scraper, Illuminated and cooled glovebox, Illuminated luggage compartment, Isofix child seat preparation outer rear, knee and curtain, LED rear lights with high functionality, Light assistant (coming/leaving home/tunnel light),

Miles: 56000**Fuel Type:** Petrol**Transmission:** Manual**Colour:** Grey**Engine Size:** 999**CO2 Emission:** 124**Tax Band:**
Petrol/Diesel (£190 p/a)**Body Style:** Estate**Reg:** Urz1253**Technical Specs****DIMENSIONS****Length:** 4382mm**Width:** 1841mm**Height:** 1603mm**Seats:** 5**Luggage Capacity (Seats Up):** 521L**Gross Weight:** 1853KG**Max. Loading Weight:** 584KG**PERFORMANCE & ECONOMY****Fuel Consum. (Urban Cold):** 42.2MPG**Fuel Consum. (Extra Urban):** 60.1MPG**Fuel Consum. (Combined):** 52.3MPG**Fuel Tank Capacity:** 50L**Number Of Gears:** 6 SPEED**Top Speed:** 116MPH**Acceleration 0-100 km/h:** 10.6s**Engine Power BHP:** 114BHP

Manual lumbar support for front seats, MKB and traction control, MSR, Net programme in boot, Outside temperature gauge, Passenger airbag with switch-off function, Pedestrian monitor, Pen holder, Pollen filter, Privacy glass, RBS, Rear boot cover, Rear reading lights, Rear seats fixed folding and divided 60:40, Remote central locking with 2 remote folding keys, Safety reflectors on front doors, Safety vest holder, SD card slot, Seatbelt reminder signalisation and pretensioner for all seats, Service interval indicator, Start/stop system with regenerative braking, Storage box in upper central dashboard closed, Storage on wheel cover, Sunvisors with illuminated vanity mirrors, Three point seatbelts rear, Two tone horn, Tyre pressure display, Tyre pressure monitor, Umbrella under passenger seat, USB connection