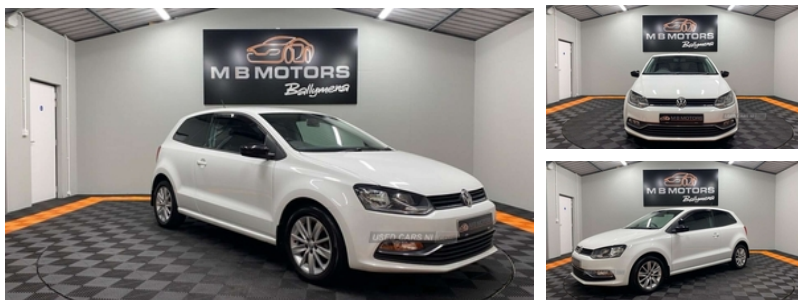




## Volkswagen Polo 1.2 TSI SE 3dr | Sep 2015

# £7,495



### Vehicle Features

'Lights On' warning buzzer, 2 bag hooks in luggage compartment, 2 cupholders, 3 point height adj front seatbelts + pretensioners, 3 rear head restraints, 3 spoke steering wheel, 3x3 point rear seatbelts, 4 grab handles, 6 speakers, 12V power socket in centre console, 60/40 split folding rear seat, ABS, Air vents in Matt chrome, Alarm with interior protection, Automatic post collision braking, aux-in, Black grille with chrome surround, Bluetooth Telephone preparation, Body colour bumpers, Body colour door handles, Body colour door mirrors, Body coloured side sills, Centre console storage, Chrome interior door handles, colour touch screen, Composition media system with radio, DAB Digital radio, Driver/front passenger airbag, Driver/Passenger whiplash optimised head restraints, Driver alert system, Driver and passenger sunvisors, Driver seat height adjust, Dust/pollen filter, Easy entry slide seats (access to rear seats), Electric front windows, Electric operated/heated door mirrors, Electronic engine immobiliser, ESC - Electronic Stability Control + traction control, ESP with EDL + ASR, Front/rear reading lights, Front door pockets, Front passenger seat height adjust, Front seat backrest storage nets, Front wash/wipe with interval delay, Full size spare wheel, Glovebox, glovebox mounted CD, HBA (Hydraulic Brake Assist), Heated rear window with auto timer, Heat insulating tinted glass, Height/reach adjustable steering column, Hill hold control, Illuminated vanity mirror, Interior light with delay, Isofix Preparation 2 Rear child seats, Luggage compartment cover, Luggage compartment lighting, Matt chrome gear lever gaiter surround, Matt chrome interior trim, Multifunction computer, Multi function display, Multifunction leather steering wheel with leather gear knob/handbrake grip,

<b>Miles:</b>	66000
<b>Fuel Type:</b>	Petrol
<b>Transmission:</b>	MANUAL
<b>Colour:</b>	White
<b>Engine Size:</b>	1197
<b>CO2 Emission:</b>	107
<b>Tax Band:</b>	B (£20 p/a)
<b>Body Style:</b>	Hatchback
<b>Insurance group:</b>	15E
<b>Reg:</b>	SD65ZLY

### Technical Specs

#### DIMENSIONS

<b>Length:</b>	3972mm
<b>Width:</b>	1682mm
<b>Height:</b>	1453mm
<b>Seats:</b>	5
<b>Luggage Capacity (Seats Up):</b>	280L
<b>Gross Weight:</b>	1620KG
<b>Max. Loading Weight:</b>	513KG

#### PERFORMANCE & ECONOMY

<b>Fuel Consum. (Urban Cold):</b>	47.1MPG
<b>Fuel Consum. (Extra Urban):</b>	70.6MPG
<b>Fuel Consum. (Combined):</b>	60.1MPG
<b>Fuel Tank Capacity:</b>	45L
<b>Number Of Gears:</b>	5 SPEED

multimedia interface, PAS - speed related, Rear windscreen washer and wiper with interval delay, Remote central locking with 2 remote folding keys, removable, SD card, Service interval indicator, Storage compartment in front doors, Sunglasses holder, Tyre pressure monitoring system, USB, Variable boot floor, Warning buzzer and light for front seatbelts unfastened

**Top Speed:** 114MPH

**Acceleration 0-100 km/h:** 10.8s

**Engine Power BHP:** 88.5BHP