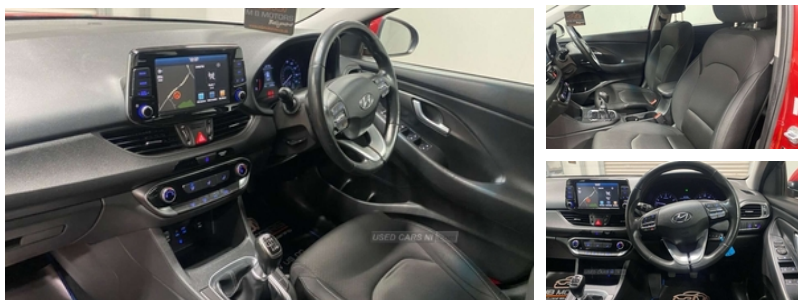




Hyundai i30 1.0T GDI SE Nav 5dr | Mar 2018

£8,995



Vehicle Features

3x3 point rear seatbelts, 6 speakers, 8" touch screen sat nav with TMC, 12V accessory power point in centre console, 12V socket in luggage compartment, 60/40 split folding flat to floor rear seats, ABS, Active front headrests, Adjustable intermittent wipers, Apple car play/Android Auto, Auto dimming rear view mirror, Automatic headlights, Autonomous emergency braking, Black front grille with chrome accent, Black window surrounds, Bluetooth connectivity with voice recognition, Body colour door handles, Body colour door mirrors, Body coloured bumpers, Centre console storage, Childproof rear door locks, Chrome effect interior door handles, Cloth upholstery, Cornering headlights, Cruise control + speed limiter, Curtain airbags, DAB Digital radio, Deadlocks, Digital clock, Drive away door locking, Driver's electric adjustable lumbar support, Driver's seat height adjuster, Driver/Front Passenger airbags, Driver/passenger sunvisors and illuminated vanity mirrors, Driver alert system, Dusk sensor, EBD + Brake Assist, Electric adjustable heated door mirrors, Electric folding door mirrors, Electric front and rear windows + anti trap + one touch, Electronic Stability Programme, Emergency spare wheel, Fasten seatbelt reminder, Folding key, Follow me home headlights, Forward collision warning, Front/rear adjustable head restraints, Front and rear door pockets, Front and rear interior lights with delay, Front centre armrest with storage compartment, Front cupholders, Front fog lights, Front map reading lights, Front passenger seat height adjust, Front seatbelt pretensioners, Front side airbags, Glove compartment, Headlamp levelling, Height/reach adjustable steering column, Height adjustable front seatbelts, Hill start assist control (HAC), Illuminated ignition key hole,

Miles:	66000
Fuel Type:	Petrol
Transmission:	MANUAL
Colour:	Red
Engine Size:	998
CO2 Emission:	115
Tax Band:	Petrol/Diesel (£190 p/a)
Body Style:	Hatchback
Insurance group:	8E
Reg:	EU18WNJ

Technical Specs

DIMENSIONS	
Length:	4340mm
Width:	1795mm
Height:	1455mm
Seats:	5
Luggage Capacity (Seats Up):	395L
Gross Weight:	1800KG
Max. Loading Weight:	606KG

PERFORMANCE & ECONOMY	
Fuel Consum. (Urban Cold):	48.7MPG
Fuel Consum. (Extra Urban):	61.4MPG
Fuel Consum. (Combined):	56.5MPG
Fuel Tank Capacity:	50L

Immobiliser, Isofix rear child seat fastenings, Lane departure warning system, Lane keep assist, Leather gear knob, Leather handbrake, Leather steering wheel, LED daytime running lights, Locking wheel nuts, Luggage compartment lighting, Parking system with rear camera and guidance system, PAS, Passenger airbag deactivate switch, Radio/CD with MP3 and WMA compatibility, Rear armrests with cupholder, Rear parking sensor, Rear spoiler, Rear wash/wipe, Remote central locking, Ski bag through loading, Smart beam, Smartphone wireless charging plate, Speed sensitive auto door locking, Steering wheel mounted audio/phone controls, Sunglasses holder, Thatcham cat 2 ultrasonic alarm, Tinted glass with shade band, Traction control, Trip computer, Tyre pressure monitor, USB/aux input socket, Variable boot floor, Vehicle Stability Control (VSC), Windscreen washer level indicator

Number Of Gears: 6 SPEED

Top Speed: 118MPH

Acceleration 0-100 km/h: 11.1s

Engine Power BHP: 118BHP