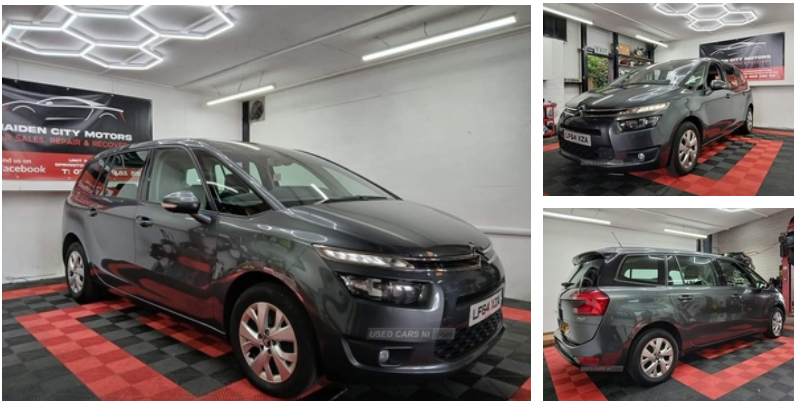


**Citroen Grand C4 Picasso 1.6 e-HDi 115  
Airdream VTR+ 5dr | Sep 2014**

**£5,450**



. ) )

moted 27/02/25  
101000 miles  
£20 pa road tax  
group 19 insurance  
parking sensors  
Touch screen media system  
Multi function steering wheel  
cruise control  
Bluetooth usb/aux  
isofx compatible

Fully serviced  
Finance available  
hpi clear  
new clutch kit just fitted

All of our Vehicles come professionally valeted and fully serviced which includes new timing belts prior to sale.

They also receive a full health check and any work that's needed is carried out in our Fully equipped workshop

We also offer a 3 month in-house warranty on all vehicles.

This could be yours for only

£5450

07840918155

<b>Miles:</b>	101000
<b>Fuel Type:</b>	Diesel
<b>Transmission:</b>	Manual
<b>Colour:</b>	Grey
<b>Engine Size:</b>	1560
<b>CO2 Emission:</b>	105
<b>Tax Band:</b>	B (£20 p/a)
<b>Body Style:</b>	MPV
<b>Insurance group:</b>	19A
<b>Reg:</b>	LF64XZA

**Technical Specs**

**DIMENSIONS**

<b>Length:</b>	4597mm
<b>Width:</b>	1826mm
<b>Height:</b>	1656mm
<b>Seats:</b>	7
<b>Luggage Capacity (Seats Up):</b>	165L
<b>Gross Weight:</b>	2150KG
<b>Max. Loading Weight:</b>	830KG

**PERFORMANCE & ECONOMY**

<b>Fuel Consum. (Urban Cold):</b>	62.8MPG
<b>Fuel Consum. (Extra Urban):</b>	74.3MPG
<b>Fuel Consum. (Combined):</b>	70.6MPG
<b>Fuel Tank Capacity:</b>	55L
<b>Number Of Gears:</b>	6 SPEED
<b>Top Speed:</b>	117MPH
<b>Acceleration 0-100 km/h:</b>	12.1s
<b>Engine Power BHP:</b>	112.6BHP

## Vehicle Features

'Guide me home' headlamps, 2 individual fold flat 3rd row seats, 3 point seatbelts on all seats, 6 speakers, 7" touch screen, 12V accessory sockets - front and rear, ABS + EBD + EBA, Adaptive driver and front passenger airbags, Aircraft type trays in front seat backrests, Automatic activation of hazard warning lights, Automatic boot locking, Automatic door locking, Automatic lights and wipers, Bluetooth with USB and AUX input, Body colour bumpers, Body colour door handles, Body colour door mirrors, Child lock indicator, Connecting box, Courtesy light in boot, Cruise control + speed limiter, Cup holders, DAB Digital radio, Double optic headlights, Dual zone automatic air conditioning, Electric folding door mirrors, Electric front/rear windows with one touch/anti pinch, Electric heated door mirrors, Electronic parking brake, ESP, Fold flat passenger seat with storage drawer, Front and rear (row 2) curtain airbags, Front and rear courtesy reading lights, Front armrests, Front fog lights, Front headrests, Front lateral airbags, Front seat back storage pockets, Front seatbelt pretensioners with force limiters, Gear selection indicator, Height/tilt adjustable driver's seat, Hill start assist, Illuminated air conditioned front passenger glovebox, Interior lights activated when doors unlocked, Leather steering wheel with audio controls, LED daytime running lights, Oil level indicator, Ondulice cloth upholstery, Passenger airbag deactivate switch, Rear air vents, Rear headrests, Rear parking sensor, Rear top tether child seat ISOFIX attachment, Rear wiper, Remote central locking + deadlocks, Remote fuel cap release, Service indicator, Split folding rear seats, Super wide panoramic acoustic windscreen, Three foldable/retractable rear head restraints [row 2], Three individual sliding/fold flat rear seats [row 2], Traction control, Transponder immobiliser, Trip computer, Tyre pressure monitor, Under floor storage compartment [row 2], Variable PAS