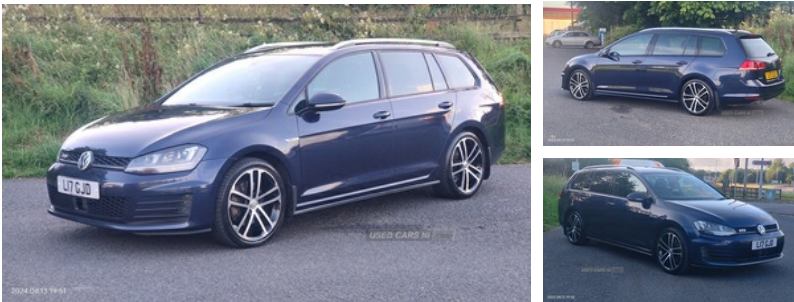


## Volkswagen Golf 2.0 TDI 184 GTD 5dr DSG | Jan 2016

**£9,995** O.N.O



### Volkswagen Golf GTD

2016 184 BHP semi-auto  
98k miles with timing belt and water pump done at 72k miles  
Full Volkswagen service history up to 80k miles  
Black addition (black headliner)  
All usual GTD Extras  
Tartan Heated front seats  
18" GTD alloys recently had new tyres all round  
Xenon headlights  
Electric windows and mirrors  
Sat Nav  
USB Charger port  
Auto headlights  
Daytime running lights  
Keyless entry with 2 remote keys  
Some age related marks  
MOT'D Oct 2024  
Just had full valet and polish

### Vehicle Features

'Lights On' warning buzzer, 3 point height adj front seatbelts + pretensioners, 3 rear 3 point seatbelts, 3 rear headrests, 3 spoke steering wheel, 4 boot load lashing points, 8 speakers, 12V socket in luggage compartment, 18" Nogar alloy wheels, 60/40 split folding rear seat, ABS, Air conditioning - 2 zone electronic climate control, Alarm with interior protection, Ambient lighting, Auto dimming rear view mirror, Auxiliary input socket, Bag hook in luggage compartment, Bi-xenon headlights with washers + dynamic curve lighting + LED daytime running lights, Black headlining, Black rear diffuser, Bluetooth Telephone preparation, Body colour bumpers, Body colour door handles, Body colour door mirrors with integral indicators, Body colour rear roof

<b>Miles:</b>	98655
<b>Fuel Type:</b>	Diesel
<b>Transmission:</b>	Automatic/Other
<b>Colour:</b>	Blue
<b>Engine Size:</b>	1968
<b>CO2 Emission:</b>	125
<b>Tax Band:</b>	D (£160 p/a)
<b>Body Style:</b>	Estate
<b>Reg:</b>	L17GJD

### Technical Specs

DIMENSIONS	
<b>Length:</b>	4596mm
<b>Width:</b>	1799mm
<b>Height:</b>	1475mm
<b>Seats:</b>	5
<b>Luggage Capacity (Seats Up):</b>	605L
<b>Gross Weight:</b>	2020KG
<b>Max. Loading Weight:</b>	600KG
PERFORMANCE & ECONOMY	
<b>Fuel Consum. (Urban Cold):</b>	49.6MPG
<b>Fuel Consum. (Extra Urban):</b>	65.7MPG
<b>Fuel Consum. (Combined):</b>	58.9MPG
<b>Fuel Tank Capacity:</b>	50L
<b>Number Of Gears:</b>	6 SPEED
<b>Top Speed:</b>	142MPH
<b>Acceleration 0-100 km/h:</b>	7.9s
<b>Engine Power BHP:</b>	185.1BHP

spoiler, Brake pad wear indicator warning light, Cherry red rear light cluster, Child locks on rear doors, Chrome-plated light switch surround, Chrome air vent surrounds, Chrome surround for front fog lights, Chrome trimmed radiator grille louvre inserts, Collision mitigation braking system, Coming/leaving home lighting function, Composition media system with Radio/CD/MP3, cooled glovebox, Cornering front fog lights, Courtesy light delay, Cover for storage compartment in centre, Cruise control + speed limiter, Cyclone decorative inserts, DAB Digital radio, Decorative effect painted inlay - Silver, Diesel particulate filter, Door open warning reflectors, Driver/Front Passenger airbags, Driver/Passenger whiplash optimised head restraints, Driver alert system, Drivers knee airbag, Dusk sensor + auto driving lights, Dust/pollen filter, Electrically adjustable and heated door mirrors, Electric front windows, Electric rear windows, Electronic brake force distribution, Electronic engine immobiliser, Electronic parking brake with auto hold, ESP with EDL + ASR, Exterior temperature gauge, Front + rear carpet mats, Front and rear curtain airbags, Front and rear parking sensors, Front footwell illumination, Front passenger airbag deactivation, Front seat back storage pockets, Front side airbags, Fuel cut off safety device, Gloss black decorative inserts in dash, Grab handles, HBA (Hydraulic Brake Assist), Heated rear windscreen, Heat insulated tinted glass 65% light absorbing from B pillar back, Height/reach adjust steering wheel, height adjustable and removable, Honeycomb radiator grille - black, illuminated, Illuminated door sills, Illuminated vanity mirrors, iPod adaptor, Isofix preparation for 2 rear child seats, Keyless entry, LED reading lights, Load through provision with rear centre armrest and cupholders x2, Lockable, Lowered sports suspension, Luggage compartment cover, Luggage compartment lighting, MDI with USB/iPod connection cables, Mirror pack - Golf, Multifunction computer - Midline, Multi function display colour screen, Multifunction leather steering wheel with leather gear knob/handbrake grip, Pre crash system, Progressive power assisted steering, Rain sensor, Range adjustable headlights, Rear windscreen washer and wiper with interval delay, Remote central locking with 2 remote folding keys, removable, Rev counter, SD card slot, Silver roof rails, Space saver spare wheel, Sports bumpers, Stainless steel pedals, Storage compartment in roof console with cover, Storage compartments in doors, Storage drawer under driver's seat, Sun visors, TFT display screen, Traffic Master traffic alert system, Trip and service interval display, Twin exhaust tailpipe, Tyre pressure monitor, Variable boot floor, Warning buzzer and light for front seatbelts unfastened, Warning triangle and first aid kit holder, White adjustable panel illumination, Windscreen wipers/ intermittent wipe + 4 position delay, Winter pack - Golf GTI/GTD/R/Alltrack

