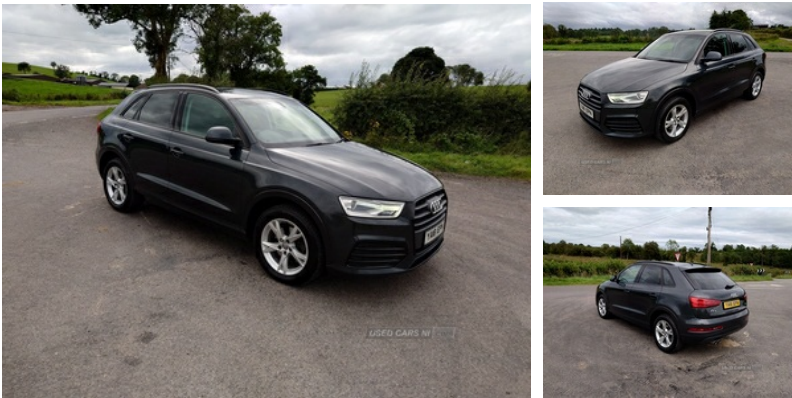


41 camderry, Dromore, BT78 3AU
07968916856

Audi Q3 2.0 TDI Sport 5dr | Jun 2018

6 SPEED, GOOD SPEC, WELL LOOKED AFTER Q3.

£12,500 O.N.O



2018 Audi Q3

Dark grey colour
2nd owner
Just through MOT (Full year)
Just got fresh tyres and new brake discs and pads.

Contact by phone:
07532682640

Vehicle Features

3 spoke multi-function Q design steering wheel, 3x3 point rear seatbelts, 6.5" colour display screen, 12V socket in rear centre console, ABS+Electronic Brake force Distribution, Acoustic windscreen, Aluminium door sill trims, Aluminium window surround, Audi drive select, Audi music interface, Auto dimming rear view mirror, Body colour door mirrors, Body coloured bumpers, Cloth headlining, Coming home function, Cruise control, Curtain airbags, DAB digital radio module, Diesel particulate filter, Door mirror integrated indicators, Driver and passenger airbags, Driver and passenger side airbags, Dual zone climate control, Dynamic suspension, EDL + ASR, Electrically operated child locks on rear doors, Electric front lumbar adjustment, Electro-mechanical PAS, Electromechanical parking brake, ESP, First aid kit, Front and rear electric windows, Front and rear headrests, Front and rear velour floor mats, Front centre armrest with storage compartment and angle adjustment, Front fog lights, Front passenger airbag deactivation, Front sports seats, Head airbags, Heated windscreen washer jets, Height/reach adjust steering wheel, ISOFIX on front passenger

Miles:	90000
Fuel Type:	Diesel
Transmission:	Manual
Colour:	Grey
Engine Size:	1968
CO2 Emission:	117
Tax Band:	Petrol/Diesel (£190 p/a)
Body Style:	Sport utility vehicle
Reg:	YA18EPN

Technical Specs

DIMENSIONS	
Length:	4388mm
Width:	1831mm
Height:	Not Availablemm
Seats:	5
Luggage Capacity (Seats Up):	420L
Gross Weight:	2085KG
Max. Loading Weight:	600KG
PERFORMANCE & ECONOMY	
Fuel Consum. (Urban Cold):	55.4MPG
Fuel Consum. (Extra Urban):	68.9MPG
Fuel Consum. (Combined):	62.8MPG
Fuel Tank Capacity:	64L
Number Of Gears:	6 SPEED
Top Speed:	126MPH
Acceleration 0-100 km/h:	9.6s
Engine Power BHP:	147.5BHP

and rear outer seats, Jack and tool kit, LED daytime running lights, LED rear lights, Light and rain sensor for auto activation of lights and windscreen wipers, Loading sill protector in stainless steel, Locking wheel bolts, Low washer fluid indicator, MMI - Multi Media Interface control system, Monometallic platinum inlay, On board computer, Rear wiper, Remote central locking, Retractable luggage cover, Seatbelt warning light, Service interval indicator, Split fold rear seat, Sports bodystyling, Storage compartment and 12V socket, Sunband for windscreen, Thatcham category 1 alarm + immobiliser, Tyre pressure monitoring system, Under floor storage in luggage area, Voice control system, Warning triangle, Xenon Plus headlights+washers+auto range adjust