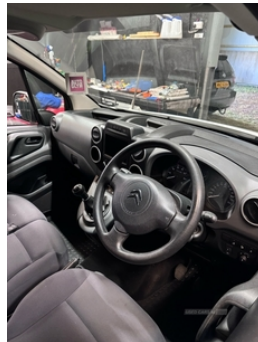


20a claggan, 20a Claggan, BT80 9XJ
07715 010123

Citroen Berlingo 1.6 HDi 850Kg Enterprise 90ps | Aug 2016

£5,250

CLEAN EXAMPLE/ AC/ APPLE CARPL



Miles:	106000
Fuel Type:	Diesel
Transmission:	Manual
Colour:	White
Engine Size:	1560
Tax Band:	Light goods vehicle (£335 p/a)
Body Style:	Van
Reg:	MH16LYO

Technical Specs

DIMENSIONS

Length:	4380mm
Width:	1810mm
Height:	1828mm
Seats:	3

Luggage Capacity (Seats Up):

Not AvailableL

Gross Weight:	2195KG
----------------------	--------

PERFORMANCE & ECONOMY

Fuel Consum. (Urban Cold):	49.6MPG
-----------------------------------	---------

Fuel Consum. (Extra Urban):	60.1MPG
------------------------------------	---------

Fuel Consum. (Combined):	56.5MPG
---------------------------------	---------

Fuel Tank Capacity:	60L
----------------------------	-----

Number Of Gears:	5 SPEED
-------------------------	---------

Top Speed:	99MPH
-------------------	-------

Engine Power BHP:	88.5BHP
--------------------------	---------

2016 Berlingo 1.6Hdi Enterprise NO VAT MOT June 2025
HPI Clear Drives like new 106k miles Excellent condition
Part service history 1.6 Diesel 50+ mpg Apple Car Play Air
conditioning Great van for sale, very well looked after. AC as well
as apple carplay and electric windows. Lissan, Cookstown
Garage for night viewing Trade in welcomed
07715010123

Vehicle Features

2 speed intermittent front wipers, 12V socket on central dashboard console, 15" steel wheels, ABS, Alarm, Cloth upholstery, Cruise control and variable speed limiter, Drivers airbag, Dual passenger bench seat, ESC including traction control, Feroe wheel trims, Full size spare wheel, Height adjustable drivers seat, Hill start assist, Multi-function trip computer, Removable PVC load floor mat, Sliding side load door nearside, Slim side rubbing strips, Smartnav navigation system, Steering wheel mounted audio controls, Super Plus pack - Berlingo, Touch screen Audio pack - Berlingo, Trackstar, Trip computer, Tyre pressure monitor, Variable PAS

USED CARS NI