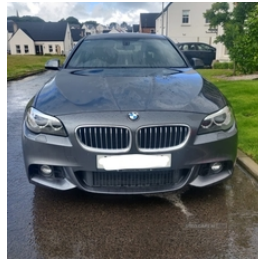


BMW 5 Series 520d [190] M Sport 4dr Step Auto | Jun 2016

£11,500



Gun metal grey colour, very good car and well looked after.

Vehicle Features

3 Spoke M sports leather steering wheel, 12V socket in rear centre console, ABS/EBD, Advanced Head Protection System front + rear, Aluminium brake calipers, Anthracite Velour floor mats, Auto dimming rear view mirror, Automatic Stability Control (ASC), Auxiliary point for auxiliary devices, Bluetooth audio streaming, BMW emergency call, BMW Online services, BMW professional radio/CD/MP3, BMW Teleservices, Body colour door handles, Body coloured bumpers, Body coloured door mirrors, Body coloured side sills, CBC - (Cornering brake control), Check control system, Chrome kidney grille with black vertical slats, Crash Sensor - activates hazard/interior lighting + unlocks doors, DAB Digital radio, Diesel particulate filter, Driver/front passenger side airbags, Driver/Passenger airbags (Impact dependent), DSC+, Dynamic brake control, Dynamic Traction Control - DTC, Electric + heated aspheric door mirrors, Electric front and rear windows with fingertip open/close + anti-trap all round, Electromechanical parking brake, Engine immobiliser, Fogging sensor for front windscreen, Front/rear courtesy lights with soft on/off dimming, Front/rear Parking distance control, Front centre armrest, Front cupholders x 2, Front footwell lights, Front head restraints with anti-whiplash, Front passenger airbag deactivation, Front passenger seat occupancy sensor, Front reading lights, Fuel cut off safety device, Green tinted heat insulating glass, Headlight range control-electric, Headlight washers, Heated front seats, Heated windscreen washer jets, Hill start assist, Illuminated glovebox with lock, Inertia reel front seatbelts+pretensioners, Isofix rear child seat preparation, Keyless ignition, Locking wheel bolts, Luggage compartment

Miles:	106000
Fuel Type:	Diesel
Transmission:	Automatic/Other
Colour:	Grey
Engine Size:	1995
CO2 Emission:	119
Tax Band:	C (£35 p/a)
Body Style:	Saloon
Reg:	YP16LBK

Technical Specs

DIMENSIONS	
Length:	4907mm
Width:	1860mm
Height:	1475mm
Seats:	5
Luggage Capacity (Seats Up):	520L
Gross Weight:	2240KG
Max. Loading Weight:	610KG
PERFORMANCE & ECONOMY	
Fuel Consum. (Urban Cold):	53.3MPG
Fuel Consum. (Extra Urban):	68.9MPG
Fuel Consum. (Combined):	62.8MPG
Fuel Tank Capacity:	70L
Number Of Gears:	8 SPEED
Top Speed:	145MPH
Acceleration 0-100 km/h:	7.7s
Engine Power BHP:	187.7BHP

release button in drivers A pillar, Luggage compartment with electric unlocking via key remote control, M aerodynamic body kit, Multi-function controls for steering wheel, On board computer, Outside temperature display, Personal Profile, Rain sensor with auto light activation system, Reach + rake adjustable steering column, Rear centre armrest with 2 cupholders + storage, Rear door child safety locks, Rear headrests, Remote central locking, Remote control Thatcham category 1 alarm, Run flat tyres, Securing rings in luggage compartment, Service interval indicator, Shark fin roof aerial, Speed limiter, Sunvisors with illuminated vanity mirrors, Three inertia reel rear seatbelts, Twin chrome exhaust tailpipes, Tyre pressure monitoring system, Warning triangle and first aid kit