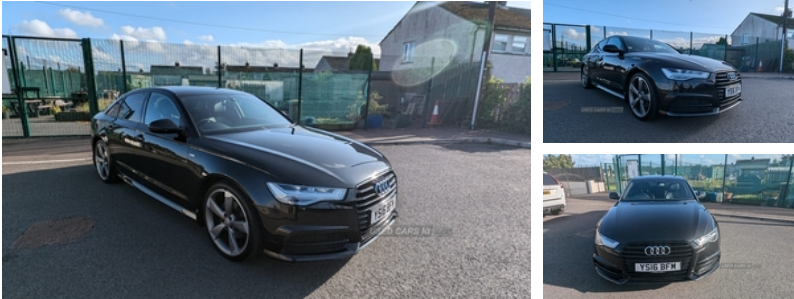


Oakvale gardens, Dunmurry, BT17 0SD
07557747621

Audi A6 2.0 TDI Ultra Black Edition 4dr S Tronic | May 2016

BLACK EDITION AUTO SAT NAV



Timing belt and waterpump and full service just done.

Gear box oil change and service just done

All work completed by AUDI BELFAST.

FULL SERVICE HISTORY

Receipts all available on request.

Car was bought from audi belfast in November.

Vehicle Features

3 point seatbelts on all seats, 4 way electric lumbar support for driver and front passenger, 4 zone climate control, 12 way electric front seats with driver's memory function, 12V power in rear centre console, ABS/EBD, Alcantara door trim, Aluminium door sill trims, Anti-theft wheel bolts, Anti theft alarm, ASR traction control, Audible and visual fasten seat belt warning - front and rear, Audi drive select, Audi music interface, Audi parking system plus with front and rear sensors, Auto dimming rear view mirror, Automatic headlights + automatic windscreen wipers, Auxiliary input socket, Black styling pack - A6, Body colour bumpers, Body colour door mirrors and handles, Body coloured door mirrors, Curtain airbags, DAB digital radio module, Diesel particulate filter, Door sill trims with S line logo, Driver/front passenger side airbags, Driver and passenger airbags, Electric front/rear windows, Electromechanical parking brake, Electronic stability control, Front/rear floor mats, Front centre armrest, Front head restraints, Front passenger airbag deactivation, Headlight washers, Height/reach adjust steering

£10,499

Miles:	128000
Fuel Type:	Diesel
Transmission:	Automatic/Other
Colour:	Black
Engine Size:	1968
CO2 Emission:	116
Tax Band:	C (£35 p/a)
Body Style:	Saloon
Reg:	YS16BFM

Technical Specs

DIMENSIONS

Length:	4933mm
Width:	1874mm
Height:	1455mm
Seats:	5
Luggage Capacity (Seats Up):	530L
Gross Weight:	2240KG
Max. Loading Weight:	580KG

PERFORMANCE & ECONOMY

Fuel Consum. (Urban Cold):	57.6MPG
Fuel Consum. (Extra Urban):	68.9MPG
Fuel Consum. (Combined):	64.2MPG
Fuel Tank Capacity:	73L
Number Of Gears:	7 SPEED
Top Speed:	144MPH
Acceleration 0-100 km/h:	8.2s
Engine Power BHP:	187.7BHP

USED CARS NI

Used Cars NI can take no responsibility for any errors which may appear in listings. Please confirm details with the seller when making an enquiry.

wheel, Height adjustable front seats, Hill hold assist, Immobiliser, Isofix front passenger and rear seat preparation, Jack and tool kit, Keyless Start, LED daytime running lights, LED rear lights, Mobile telephone preparation - bluetooth interface, Non smoking pack - A6, PAS, Perforated leather gearknob, Platinum grey front lip spoiler, Privacy glass (to rear of B post), Rear headrests, Remote central locking, Service interval indicator, S Line body styling, Space saver spare wheel, Split folding rear seat, Tyre pressure monitoring system, Warning triangle and first aid kit