

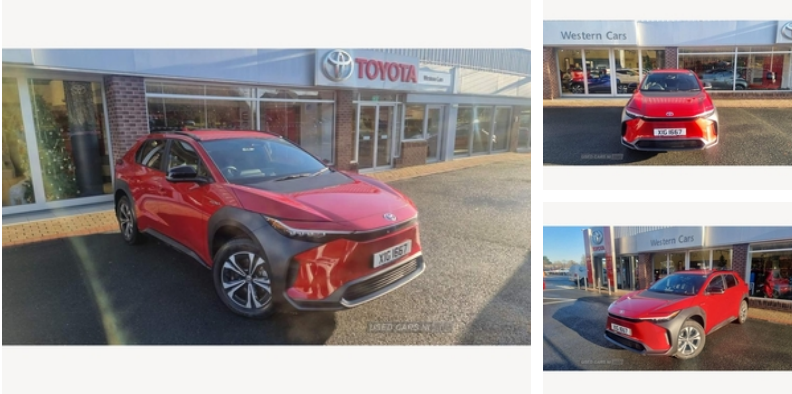


28-32 Sligo Road Enniskillen, Enniskillen, BT74 7JY  
Office: 02866324323 | Western Cars: 07730133221

## Toyota bZ4X 150kW Motion 71.4kWh 5dr Auto [11kW] | Jul 2023

# £34,890

**REVERSE CAMERA, PARKING SENSORS**



This 2023 Toyota Bz4x in the Motion Edition spec. The Bz4x is the very top of the range when it comes to spec, Heated/Electric Front Seats, Push button tailgate, Multimedia System including built in SatNav and Apple Car Play, 360 Camera, Blind Spot Monitor, Front and Back Parking Sensors, Reverse Camera and more! The vehicle is ready for you to view at our dealership today, however, if you aren't able to come and visit our dedicated sales team can provide you the opportunity to view through video call at a time that suits you best!

This is a one owner vehicle with a full Toyota service history here with us at Western cars and has been prepared to the highest of standards including a full valet inside and out! It also comes with 12 months road side assist for peace of mind and a 12 month warranty, which can be extended up to 10 years or 100,000 miles through the Toyota Relax scheme!

Finance options are available and we welcome part-exchange, (finance can be processed online).

Western Cars are a long established, family run business with over 35 years of experience as a Toyota Franchise. Customer experience and satisfaction is always our top priority, whether that be through sales or our top class after sales department. Come visit us to view our stock and to experience a fantastic customer journey.

#GoWestForTheBest

### Vehicle Features

<b>Miles:</b>	1210
<b>Fuel Type:</b>	Electric
<b>Transmission:</b>	Automatic
<b>Colour:</b>	Red
<b>Tax Band:</b>	Electric (£0 p/a)
<b>Body Style:</b>	Estate
<b>Insurance group:</b>	36E
<b>Reg:</b>	XIG1667

### Technical Specs

DIMENSIONS	
<b>Length:</b>	4690mm
<b>Width:</b>	1860mm
<b>Height:</b>	1600mm
<b>Seats:</b>	5
<b>Luggage Capacity (Seats Up):</b>	452L
<b>Gross Weight:</b>	2465KG
<b>Max. Loading Weight:</b>	555KG

PERFORMANCE & ECONOMY	
<b>Fuel Consum. (Urban Cold):</b>	Not AvailableMPG
<b>Fuel Consum. (Extra Urban):</b>	Not AvailableMPG
<b>Fuel Consum. (Combined):</b>	Not AvailableMPG
<b>Fuel Tank Capacity:</b>	Not AvailableL
<b>Number Of Gears:</b>	1 SPEED
<b>Top Speed:</b>	99MPH
<b>Acceleration 0-100 km/h:</b>	7.5s



2nd row rear passenger room LED light, 3 seat bench in 2nd row, 3 spoke leather steering wheel, 3x3 point rear seatbelts, 6 speakers, 7" Multi information screen, 12.3" multimedia display screen, 12v power outlet - front, 60/40 split folding 2nd row rear seats, 360 degree panoramic view monitor, Acceleration suppression at low speed, Adaptive cruise control [ACC] switch on steering wheel, Adaptive high beam, Ambient lighting on interior door handles, Armrest on front console box, Assist grips front, Assist grips rear, Auto headlight levelling, Automatic headlights, Automatic rear flashing hazard lights, Auto up and down function on power windows, Auto wipers, Black centre console, Black interior door handles, Black lower front grille, Blind spot monitor, Bluetooth connectivity, Body coloured door handles, Body colour shark fin antenna, Boot door release with push button, Child safety door lock, cyclist and motorbike detection, DAB Digital radio, Downhill Assist Control (DAC), Driver and passenger central airbags, Driver and passenger front airbags, Driver and passenger side airbags, Driver monitoring camera, Dual zone automatic air conditioning, Electric heated door mirrors, Electrochromatic auto dimming rear view mirror, Electronic parking brake with hold function, Emergency driving stop system, Emergency services call system, Emergency steering assist, Energy saving heat pump, Front Calipers, Front head restraints, Front parking sensors with automatic object breaking, Front seat belt reminder, Front to front oncoming car and motorbike daytime detection, Glass breaking alarm sensors, Headlight cut-off reminder, Heated driver and front passenger seats, Hill start assist control (HAC), Illuminated entry system and footwell lights, Immobiliser, Intelligent adaptive cruise control, Intersection cut in traffic assist, Intersection turn assist, Intrusion sensor, Lane departure alert with steering control, Lane trace assist, LED centre room light, LED daytime running lights, LED Headlights, LED High mounted stop lamp, LED Indicators, LED rear brake lights, LED rear combination lights, Light on driver sun visor, Light on passenger sun visor, Lower front grille shape, Manually height adjustable front passenger seat, Manually sliding front passenger seat, Manual telescopic steering wheel, Manual tilt steering wheel, Microphone on front personal light, Mirror on driver sun visor, Mirror on passenger sun visor, Multimedia switch on steering wheel, On-off switch for passenger airbags, Partial synthetic leather upholstery, PAS, Power adjustable door mirrors, Power adjustable lumbar support on driver seat, Power back door, Power door locks, Power height adjustable driver seats, Power sliding driver seat, Power window switches with satin chrome inserts, Pre collision system with pedestrian, Privacy glass, Rain sensor, Rear armrest, Rear calipers, Rear fog lights, Rear head restraints, Rear parking sensors with automatic object and car breaking, Rear passenger

**Engine Power BHP:**

201.2BHP

air vents, Rear passenger side airbags, Rear seat belt reminder, Rear side wing doors, Rear spoiler, Rear USB connector x2, Rear wiper, Remote boot door release on key, Safe exit assist, Shark fin antenna, Single front passenger seat, Smart voice assist, Soft touch rear door trim, Speed limiter switch on steering wheel, Speed limiter with road sign assist, Tailgate, Telephone switches on steering wheel, Tilt detection sensors, Toyota safety sense with over the air updates, Toyota touch 2 with go navigation, Tyre pressure warning system, Tyre repair kit, USB connector, UV-filter on driver and front passenger windows, UV-filter on rear windows, Voice recognition, Wireless Mobile Phone Charger, Wireless smartphone integration with Apple CarPlay and Android auto