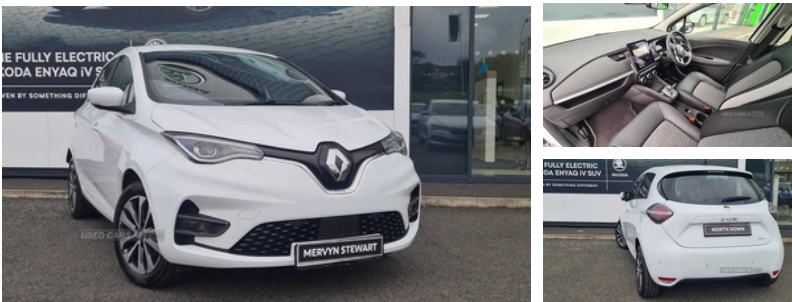


**Renault Zoe 100kW i GT Line R135 50kWh 5dr Auto | Oct 2020**

**£9,195**



**Vehicle Features**

2 coat hooks, 2 USB sockets in rear, 3 point rear seatbelts x3, 3 point seatbelts on all rear seats, 3 rear head restraints, 10" TFT Driver information display, 12V socket in lower dashboard, Anti-lock braking system (ABS), Anti-lock braking system (Anti-lock Braking System), Auto dimming rear view mirror, Automatic air conditioning, Automatic hazard lights activation under emergency braking, Automatic headlights + automatic windscreen wipers, Automatic high/low beam, Automatic parking brake, Automatic rain sensing wipers, Battery charge indicator, Blind spot warning, Body colour bumpers, Body colour door mirrors, Body colour front door handles, Chameleon charger AC 2-22kW, Chameleon charger Air Conditioning 2-22kW, Charging cable (Type 2), Child locks on rear doors, Chrome grille, Chrome surround on front fog lamps, Cruise control + speed limiter, Cruise control switches on steering wheel, Deadlocking system, Driver/Front Passenger airbags, Driver/passenger sunvisors and vanity mirrors, Driver one touch and passenger electric windows, Drivers seat with longitudinal adjustment and recline, Driving style indicator, Eco mode, Econometer, Electrically operated heated and folding mirrors, Electric power steering, Electric rear windows, Electronic engine immobiliser, ESP + ASR traction control + CSV understeer control, Front charging socket, Front door storage bins with bottle holder, Front fog lights, Front head restraints, Front passenger airbag deactivation, Full LED headlamps with C-shape daytime running lights, Full LED headlamps with C-shape LED daytime running lights, Gear shift indicator, Glovebox, Hands free Renault card, Heated rear windscreen, Height/reach adjust steering wheel, Height adjustable front seatbelts, Hill start assist, Hot stamped grille, ISOFIX on front passenger and rear outer seats, Lane departure warning system (LDW), Lane keeping assistant (LKA), Over speed prevention, PET soft touch steering wheel, RAID (Renault

<b>Miles:</b>	41820
<b>Fuel Type:</b>	ELECTRIC
<b>Transmission:</b>	Automatic
<b>Colour:</b>	White
<b>Tax Band:</b>	Electric (£0 p/a)
<b>Body Style:</b>	Hatchback
<b>Insurance group:</b>	22A
<b>Reg:</b>	AYZ5730

**Technical Specs**

<b>DIMENSIONS</b>	
<b>Length:</b>	4087mm
<b>Width:</b>	1787mm
<b>Height:</b>	1562mm
<b>Seats:</b>	5
<b>Luggage Capacity (Seats Up):</b>	338L
<b>Gross Weight:</b>	1988KG
<b>Max. Loading Weight:</b>	486KG

<b>PERFORMANCE &amp; ECONOMY</b>	
<b>Fuel Consum. (Urban Cold):</b>	Not AvailableMPG
<b>Fuel Consum. (Extra Urban):</b>	Not AvailableMPG
<b>Fuel Consum. (Combined):</b>	Not AvailableMPG
<b>Fuel Tank Capacity:</b>	Not AvailableL
<b>Number Of Gears:</b>	1 SPEED
<b>Top Speed:</b>	87MPH
<b>Acceleration 0-100 km/h:</b>	9.5s

Anti-Intruder Device), RAID (Renault Anti-Intruder Device) with automatic door locking, Range indicator, Range optimizer, Rear disc brakes, Remote central locking, Seatbelt pretensioners with load limiters, Seatbelt warning, Slow speed pedestrian warning, Smartphone integration compatible with Apple CarPlay and Android Auto, Soft armrests in door panels, Split folding rear seats, Steering wheel mounted controls, Stowage pocket in front passenger seat back, Synthetic leather/fabric (recycled) upholstery, Technology pack - Zoe, Tinted rear windows, Traffic sign recognition (TSR), Twin front cupholders, Tyre pressure monitor, Tyre repair kit

**Engine Power BHP:** 134.1BHP