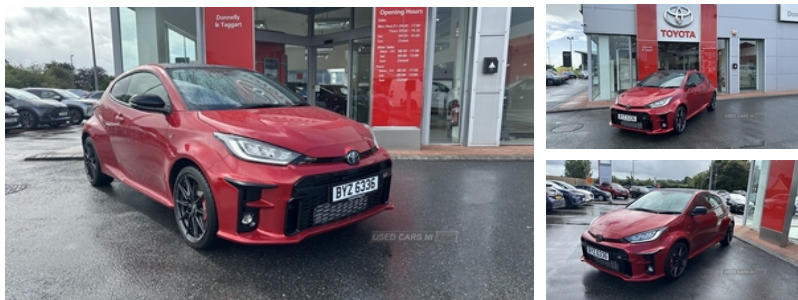


Toyota GR Yaris 1.6 3dr AWD [Circuit Pack] | Sep 2022

£39,995

BRAND NEW! SHOWROOM CONDITION!



Vehicle Features

1 rear and 2 sides, 2 rear head restraints, 2 seat bench in 2nd row, 3 spoke leather sports steering wheel, 6 speakers, 8" Multimedia display touch screen, 12v socket in front, 18" 10 spoke forged alloy wheels with Michelin pilot sport, 60/40 split folding rear seat, ABS with Brake Assist, Adaptive high beam assist, Adaptive LED Headlights, Airbags - driver and front passenger, Air intakes for brake cooling, Alarm/immobiliser, Aluminium pedals, Apple car play/Android Auto, Auto dimming electrochromatic rear view mirror, Automatically retractable door mirrors, Automatic headlights, Automatic headlights cut-off, Auto windscreen wipers, Black contrasting colour door mirrors, Black rear roof spoiler, Body coloured door handles, Body coloured rear bumper, Carbon fibre roof wrap, Circuit tuned GR suspension, Clean air filter, Coloured TFT multi informational display, DAB Digital radio, Door scuff plates, Double wishbone rear suspension, Driver's sun visor with vanity mirror, Driver and passenger headrests, Driver and passenger side airbags, Dual exhaust pipes, Dual zone automatic air conditioning, eCall emergency system, Electric adjustable heated door mirrors, Emergency brake light system (EBS), Emergency steering assist, Follow me home headlights, Front auto power windows with anti jam protection, Front cup holders, Front map light, Front passenger airbag on/off switch, Front seatbelt reminder, Front sports seats, Gloss black GR front bumper, GR-Four AWD switch, GR badges 1 front, GR floor mats, GR logo on steering wheel, GR lower front grille, GR Ultrasuede leather upholstery, Height adjustable driver's seat, Hill start assist control (HAC), Integrated LED indicators in door mirrors, Intelligent adaptive cruise control, Isofix child rear seat restraints, Keyless smart entry with push button start, Lane Departure Alert (LDA) switch on steering wheel, Lane trace assist, Leather gearshift, Leather handbrake,

| | |
|-------------------------|--------------------------|
| Miles: | 10 |
| Fuel Type: | Petrol |
| Transmission: | Manual |
| Colour: | Red |
| Engine Size: | 1618 |
| Tax Band: | Petrol/Diesel (£190 p/a) |
| Body Style: | Hatchback |
| Insurance group: | 36A |
| Reg: | BYZ6336 |

Technical Specs

| DIMENSIONS | |
|-------------------------------------|----------|
| Length: | 3995mm |
| Width: | 1805mm |
| Height: | 1455mm |
| Seats: | 4 |
| Luggage Capacity (Seats Up): | 141L |
| Gross Weight: | 1645KG |
| Max. Loading Weight: | 365KG |
| PERFORMANCE & ECONOMY | |
| Fuel Consum. (Combined): | 34.5MPG |
| Fuel Tank Capacity: | 50L |
| Number Of Gears: | 6 SPEED |
| Top Speed: | 00143MPH |
| Acceleration 0-100 km/h: | 5.5s |
| Engine Power BHP: | 257.5BHP |

LED daytime running lights, LED fog lights, LED High mounted stop lamp, LED rear combination lights, MacPherson front suspension, Manual slide adjustable on driver's and passenger seats, Microphone on front personal light, Multimedia switch on steering wheel, Piano black side air vents, Pollen filter, Power Steering, Pre-collision system (PCS), Privacy glass on rear and back windows, Rear auto power windows with anti jam protection, Rear passenger airbag, Rear seat belt reminder, Rear window defogger, Rear wiper, Red brake callipers, Red sport front and rear brake pads, Red stitching on gearshift, Red stitching on handbrake lever, Reversing camera, Road sign assist - RSA, Satin chrome interior door handles, Shark fin antenna, Single front passenger seat, Soft tonneau cover, Start holding control, Ticket holder on driver's sun visor, Tilt/telescopic steering column, Torsen limited slip differentials x2, Toyota touch 2 multimedia system, Tyre pressure warning system, Tyre repair kit, USB connection, Vehicle Stability Control (VSC)