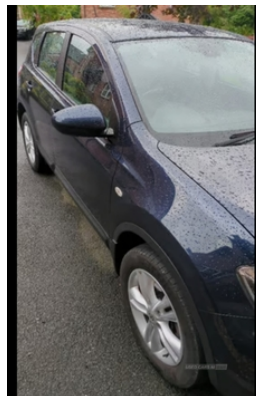


## Nissan Qashqai 1.5 dCi [110] Acenta 5dr | Mar 2012

**£1,995** O.N.O



Great family car.  
Full service history.  
Recently installed new timing belt, Starter and alternator.

Dent in passenger door -see photos

### Vehicle Features

2 speed wipers+variable intermittent wipe, 6 speakers, 12V socket, 17" alloy wheels, 60/40 split folding rear seat, ABS, Alarm, Audio remote control, Automatic door locking, Automatic headlamp activation, Black honeycomb front grille, Bluetooth phone integration system, Body colour bumpers, Body colour door mirrors and handles, brake assist and EBD, Child locks on rear doors, Cloth upholstery, Cruise control, Diesel particulate filter, Driver's lumbar support, Driver/front passenger airbag, Driver/passenger front seatback pockets, Dual zone climate control, Electric folding door mirrors, Electric front/rear windows with drivers one touch/anti-trap, Electric operated/heated door mirrors, ESP + traction control, Footwell ambient lighting, Front armrest, Front cupholders x 2, Front fog lights, Front head restraints, Front seat belt pre-tensioners with load limiters, Height adjustable driver's seat, Height adjustable front seatbelts, Illuminated glovebox, Immobiliser, Isofix child seat preparation, Leather gearknob, Leather steering wheel, Map reading lamp,

<b>Miles:</b>	155000
<b>Fuel Type:</b>	Diesel
<b>Transmission:</b>	Manual
<b>Colour:</b>	Blue
<b>Engine Size:</b>	1461
<b>CO2 Emission:</b>	137
<b>Tax Band:</b>	E (£190 p/a)
<b>Body Style:</b>	Sport utility vehicle
<b>Reg:</b>	Cxz6986

### Technical Specs

DIMENSIONS	
<b>Length:</b>	4330mm
<b>Width:</b>	1780mm
<b>Height:</b>	1615mm
<b>Seats:</b>	5
<b>Luggage Capacity (Seats Up):</b>	410L
<b>Gross Weight:</b>	1930KG
<b>Max. Loading Weight:</b>	512KG

PERFORMANCE & ECONOMY	
<b>Fuel Consum. (Urban Cold):</b>	44.8MPG
<b>Fuel Consum. (Extra Urban):</b>	61.4MPG
<b>Fuel Consum. (Combined):</b>	54.3MPG
<b>Fuel Tank Capacity:</b>	65L
<b>Number Of Gears:</b>	6 SPEED
<b>Top Speed:</b>	110MPH
<b>Acceleration 0-100 km/h:</b>	12.4s
<b>Engine Power BHP:</b>	108.6BHP

PAS, Pollen filter, Radio/CD + MP3, Rain sensor windscreen wipers, Rake/reach adjustable steering wheel, Rear armrest with 2 cupholders, Rear headrests, Rear ultrasonic parking distance sensors, Rear wiper, Remote central locking, Service interval indicator, Side + roof airbags, Speed limiter, Three 3 point rear seatbelts, Trip computer, Tyre puncture repair kit, USB/aux input socket