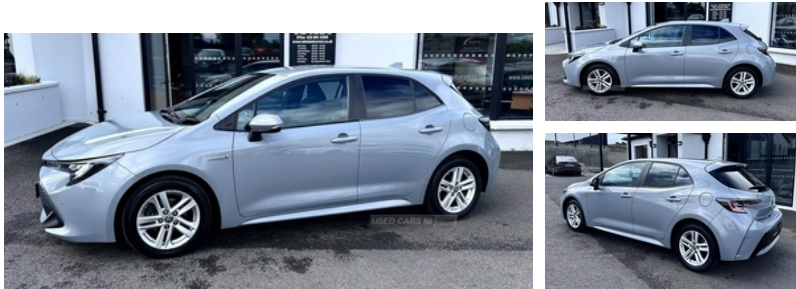


**Toyota Corolla 1.8 VVT-i Hybrid Icon Tech 5dr  
CVT | Jun 2021**

**£15,295**

**ABSOLUTELY IMMACULATE EXAMPLE!**



ABSOLUTELY IMMACULATE EXAMPLE! Comes complete with Full owners manual, Fully serviced, Full electrics, Bluetooth, Intelligent park assist, Reversing camera, Apple car play, Side steps and all the usual Tech refinements All our vehicles are fully serviced, warranted and prepared to the highest standards. Excellent part ex and finance examples are available on request. Contact one of our sales team for more information

**Vehicle Features**

3 rear headrests, 3 spoke leather steering wheel + gear knob, 3x3 point rear seatbelts, 6 speakers, 7" Multi information display screen, 8" Touchscreen with MM19 Multimedia system and voice recognition, 60/40 split folding rear seat, Acoustic vehicle alert system (AVAS), Adjustable driver and front passenger seat belt extender to top anchor point, Adjustable speed limiter switch on steering wheel, Alarm with motion sensor and immobilizer, AM/FM radio, Anti-jam protection on power windows, Anti lock braking system + Electronic brake force distribution, Audio, Audio, Automatic headlights with high beam assist, Auto up and down function on all power windows, Black metallic surround on lower front grille, Black toyota logo in front, Black window frames, Bluetooth telephone connectivity, Body coloured bumpers, Body coloured door mirrors, Body coloured outside door handles, Body coloured rear spoiler, Body colour rear spoiler, Boot light, Brake assist function, Centre room light, Clean air filter, Connected car functionality upgrade, Connected car functionality upgrade, DAB Digital radio, Downhill Assist Control (DAC), Driver and front passenger personal light, Driver and passenger assist grip, Driver and passenger sun visor with mirror and light, dual side curtain, dual side curtain, Dual zone automatic air conditioning with ECO mode switch, Dynamic radar cruise control (with RSA) including switch on steering wheel, Dynamic radar cruise control (with RSA) switch on steering

<b>Miles:</b>	40000
<b>Fuel Type:</b>	HYBRID ELECTRIC
<b>Transmission:</b>	Automatic
<b>Colour:</b>	Grey
<b>Engine Size:</b>	1798
<b>Body Style:</b>	Hatchback
<b>Insurance group:</b>	15E
<b>Reg:</b>	HG21JFN

**Technical Specs**

<b>DIMENSIONS</b>	
<b>Length:</b>	4370mm
<b>Width:</b>	1790mm
<b>Height:</b>	1435mm
<b>Seats:</b>	5
<b>Luggage Capacity (Seats Up):</b>	313L
<b>Gross Weight:</b>	1820KG
<b>Max. Loading Weight:</b>	525KG

<b>PERFORMANCE &amp; ECONOMY</b>	
<b>Fuel Consum. (Urban Cold):</b>	88.3MPG
<b>Fuel Consum. (Extra Urban):</b>	78.5MPG
<b>Fuel Consum. (Combined):</b>	85.6MPG
<b>Fuel Tank Capacity:</b>	43L
<b>Number Of Gears:</b>	1 SPEED
<b>Top Speed:</b>	112MPH
<b>Acceleration 0-100 km/h:</b>	10.9s
<b>Engine Power BHP:</b>	120.7BHP

wheel, E-call, Electrically assisted power steering, Electronic parking brake, Emergency brake light signal (EBS), EV drive indicator, Fabric armrests, Follow me home headlights, Front and rear cup and bottle holders, Front door pockets, Front head restraints, Front passenger airbag on/off switch, Front seatbelt reminder, Gasoline particulate filter, HAC-Hill-start Assist Control, Heated driver and front passenger seats, Illuminated entry system in room lamp, Intelligent park assist, ISOFIX seat fixing (2 fixings on rear outer seats), Lane Departure Alert (LDA) switch on steering wheel, Leather gear shift with satin chrome on gear shift console, LED daytime running lights, LED front fog lights, LED Headlights, LED High mounted stop light, Manual day/night rear view mirror, Manual height adjustable for driver and front passenger seat, Memory on adjustable speed limiter, multimedia and telephone switches on steering wheel, multimedia and telephone switches on steering wheel, Parcel shelf, Parking pack - Corolla, Passenger seat back pocket, Pollen filter, Power adjustable heated door mirrors, Power adjustable lumbar support on driver seat, Power front windows, Power rear windows, Power window switches with satin chrome inserts, Push button start, Quilted fabric upholstery with grey stitches seats, Rear armrest with 2 cupholders, Rear passenger coat hooks (2), Rear seat belt reminder, Rear window defogger, Rear window wiper, Remote central locking + deadlocks, remote status and e-care, remote status and e-care, Reversing camera, Satin chrome dash trim, Satin chrome inside door handles, Seatbelt pretensioners and force limiters, Shark fin antenna, Shopping bag hooks in luggage compartment, side impact and driver knee airbags, side impact and driver knee airbags, Sliding armrest on centre console box, Slow opening glovebox with lights, Smart entry, Smartphone integration with Apple CarPlay and Android auto, Soft touch texture on upper dashboard, Soft touch texture on upper dashboard, Supplemental restraint system (SRS) 7 airbags - dual driver, Supplemental restraint system (SRS) 7 airbags - dual driver, Tilt/telescopic steering column, Time adjustment on intermittent wiper, Toyota safety sense 2 pack - Corolla, Toyota touch 2 with go navigation system, tracker, tracker, Traction control, Turning signal integrated indicators in door mirrors, Tyre pressure warning system, Unique lower skirt, Unique side rocker with black insert, Unique wheel finish with red wheel cap, USB and Aux in connectors + 12V front outlet, UV-filter on driver and passenger windows, Vehicle Stability Control (VSC), Voice recognition switch on steering wheel, Whiplash Injury Lessening (WIL) feature (active headrest) for seats, WIL - Whiplash Injury Lessening seats