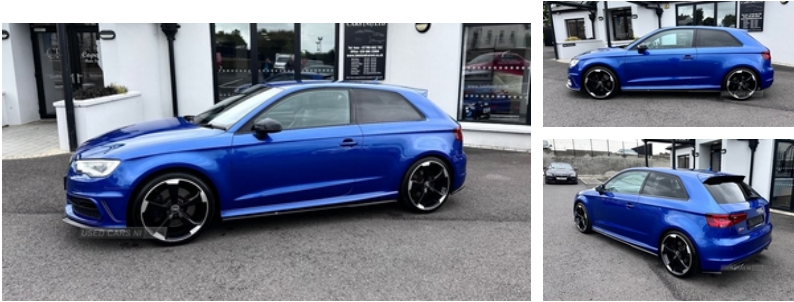


**Audi A3 S3 TFSI Quattro 3dr | Sep 2015**

**£14,995**



ABSOLUTELY IMMACULATE EXAMPLE! Comes complete with Full owners manual, Fully serviced, Full electrics, S Body styling, Heated front seats, Storage and luggage pack, S Sports suspension and all the usual S3 refinements All our vehicles are fully serviced, warranted and prepared to the highest standards. Excellent part ex and finance examples are available on request. Contact one of our sales team for more information

**Vehicle Features**

3 adjustable rear headrests, 3 point seatbelts on all seats, 3 spoke flat bottomed multi-function leather steering wheel, 4 lashing points to secure luggage, 60/40 split folding rear seat, ABS/EBD, Active bonnet, Active front headrests, Adjustable front armrest, Aluminium air vent surrounds, Aluminium door mirror housings, Aluminium door sill trims, Aluminium side window trim, Aluminium trim elements, Anti-lock Braking System/EBD, Anti-theft wheel bolts, ASR, Audi drive select, Audi music interface, Body colour bumpers, Body coloured bumpers, Body coloured roof spoiler, Body colour roof spoiler, Chrome exhaust tailpipes, Cloth headlining, Coat hooks on both sides, Colour driver's information system display, Cup holders, Curtain airbags, DAB Digital radio, Driver/Front Passenger airbags, Driver/passenger sunvisors, Driver and passenger side airbags, Driver seat undertray, Drivers knee airbag, Dual zone electronic climate control, EDL, Electric front windows, Electromechanical parking brake, ESC - Electronic Stability Control + traction control, Front/rear floor mats, Front and rear interior lights with delay, Front passenger airbag deactivation, Front seats - 'Easy Entry', Heated front seats, Heated rear window, Heated windscreen washer jets, Height/depth adjustable steering column, Height adjustable front seats, Illuminated glovebox, Illuminated luggage compartment, ISOFIX child seat preparation+airbag deactivation, Jack and tool kit, LED daytime running lights, LED rear lights, Low washer fluid indicator, Platinum grey radiator

<b>Miles:</b>	73000
<b>Fuel Type:</b>	PETROL
<b>Transmission:</b>	Manual
<b>Colour:</b>	Blue
<b>Engine Size:</b>	1984
<b>CO2 Emission:</b>	162
<b>Tax Band:</b>	G (£255 p/a)
<b>Body Style:</b>	Hatchback
<b>Insurance group:</b>	36E
<b>Reg:</b>	WU65TPX

**Technical Specs**

<b>DIMENSIONS</b>	
<b>Length:</b>	4254mm
<b>Width:</b>	1777mm
<b>Height:</b>	1401mm
<b>Seats:</b>	5
<b>Luggage Capacity (Seats Up):</b>	325L
<b>Gross Weight:</b>	1965KG
<b>Max. Loading Weight:</b>	560KG

<b>PERFORMANCE &amp; ECONOMY</b>	
<b>Fuel Consum. (Urban Cold):</b>	31MPG
<b>Fuel Consum. (Extra Urban):</b>	48.7MPG
<b>Fuel Consum. (Combined):</b>	40.4MPG
<b>Fuel Tank Capacity:</b>	55L
<b>Number Of Gears:</b>	6 SPEED
<b>Top Speed:</b>	155MPH
<b>Acceleration 0-100 km/h:</b>	5.2s
<b>Engine Power BHP:</b>	296.4BHP

grille with double chrome bars, Progressive power assisted steering, Rear wiper, Remote control central locking, Removable rear parcel shelf, S body styling, Seatbelt warning, Service interval indicator, Space saver spare wheel, S sports suspension, Stainless steel pedals, Storage and luggage pack - A3/RS3, Storage compartment in centre console, Storage compartments in doors, Thatcham category 1 alarm + immobiliser, Twin exhaust tailpipe, Tyre pressure monitor, Voice control system, Warning triangle and first aid kit