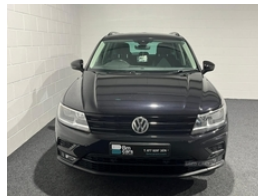


## Volkswagen Tiguan 2.0 TDi 150 SE Nav 5dr | Oct 2018

# £14,995



<b>Miles:</b>	58000
<b>Fuel Type:</b>	Diesel
<b>Transmission:</b>	Manual
<b>Colour:</b>	Black
<b>Engine Size:</b>	1968
<b>CO2 Emission:</b>	126
<b>Tax Band:</b>	Petrol/Diesel (£190 p/a)
<b>Body Style:</b>	Sport utility vehicle
<b>Insurance group:</b>	16E
<b>Reg:</b>	DE68ZFZ

Indoor and after hours viewing available

Part ex and finance available  
 PM for an individual finance quote

Tel/Whatsapp 07792973874

### Vehicle Features

2 x USB sockets in front, 3 rear 3 point seatbelts, 3 rear headrests, 3 zone climate control, 4 load lashing points, 12V socket in centre console, 40:20:40 split folding rear seats, ABS+EBD+Brake assist, Active bonnet, Active pedestrian safety system, Adaptive cruise control, Alarm with interior protection, Auto dimming interior mirror, Automatic activation of hazard warning lights, Aux-in socket, Black door protector with chrome inserts, Bluetooth phone integration system, Body colour door handles, Body colour door mirrors, Body coloured bumpers, Car-Net App-Connect, Chrome door trim inserts, Chrome side window surrounds, Chrome trimmed radiator grille, Coming/leaving home lighting function, Curtain airbags, DAB Digital radio, Diesel particulate filter, Distance control assist, Driver + front passenger lumbar support, Driver/Front Passenger airbags, Driver/Passenger whiplash optimised head restraints, Drivers knee airbag, DTC - Drag torque control, Dusk sensor + auto driving lights, Elec heated + adjust door mirrors, Electric folding door mirrors, Electronic engine immobiliser, Electronic parking brake with auto hold, ESP with EDL + ASR, Fatigue detection system, First aid kit, Foldable passenger seatback, Front + rear carpet mats, Front and rear electric windows, Front assist including city emergency braking, Front centre armrest with 12v socket, Front centre armrest with storage + rear 2 air vents +

### Technical Specs

DIMENSIONS	
<b>Length:</b>	4486mm
<b>Width:</b>	1839mm
<b>Height:</b>	1657mm
<b>Seats:</b>	5
<b>Luggage Capacity (Seats Up):</b>	615L
<b>Gross Weight:</b>	2170KG
<b>Max. Loading Weight:</b>	640KG

PERFORMANCE & ECONOMY	
<b>Fuel Consum. (Urban Cold):</b>	50.4MPG
<b>Fuel Consum. (Extra Urban):</b>	65.7MPG
<b>Fuel Consum. (Combined):</b>	58.9MPG
<b>Fuel Tank Capacity:</b>	58L
<b>Number Of Gears:</b>	6 SPEED
<b>Top Speed:</b>	127MPH
<b>Acceleration 0-100 km/h:</b>	9.3s
<b>Engine Power BHP:</b>	147.5BHP

---

cupholders, Front seatback folding tables, Front side airbags, Head airbag system, Heated rear window, Height/reach adjust steering wheel, Height adjustable front 3 point seatbelts + pretensioners, Hill hold control, Illuminated driver/passenger vanity mirrors, Illuminated scuff plates, Instrument cluster, Interior light with delay, Isofix Preparation 2 Rear child seats, Lane assist, Leather gear knob, Load through provision with 2 cupholders when folded, Lockable cooled glovebox, Low washer fluid warning light, Luggage compartment lighting, Luggage compartment side storage, Map pockets on front seats, MP3 compatible single CD player, Outside temperature display, Passenger airbag deactivate switch, Passenger seat height adjuster, Passenger underseat drawer, Pre crash system, Rain sensor windscreen wipers, Rear cupholders, Rear side airbags, Rear windscreen washer and wiper with interval delay, Remote central locking with 2 remote folding keys, Removable luggage cover, SD card slot, Seatbelt warning lamp and buzzer, Service interval indicator, Silver roof rails, Sliding/reclining rear seats, Speed limiter, Steel space saver spare wheel, Storage compartment in driver's door, Storage compartment in passenger's door, Storage compartment in rear doors, Storage tray on dashboard, Sunglasses storage, Tinted windows (B pillar backwards), Titan silver decorative inserts, Two tone horn, Variable boot floor, Warning lights, Warning triangle, Windscreen wipers/ intermittent wipe + 4 position delay, XDS electronic differential lock