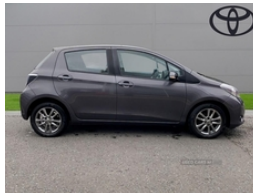


Toyota Yaris 1.33 Vvt-I Icon+ 5Dr | May 2014
LOW MILEAGE

£7,199



Miles:	37909
Fuel Type:	Petrol
Transmission:	Manual
Colour:	Grey
Engine Size:	1329
CO2 Emission:	123
Tax Band:	D (£160 p/a)
Body Style:	Hatchback
Insurance group:	10E

TFZ3249. Toyota Dundonald are offering a rare opportunity to own the TOYOTA YARIS 1.33 Vvt-I Icon+ 5dr. This 2 owner vehicle has full service history, was supplied by our group and has been maintained by us too. Since being returned to us it has been fully checked over by our fully trained, experienced technicians and is ready to go.

Technical Specs

DIMENSIONS

The Toyota Yaris 1.33 VVT-i Icon+ 5dr is a compact hatchback known for its practicality, making it a popular choice for city driving. Here's a breakdown of what this model typically offers: Key Features: Engine: 1.33-liter VVT-i petrol engine. Power: Approximate 100hp. Usually comes with a 6-speed manual transmission, though an automatic version might be available. Fuel Economy: The model boasts good fuel efficiency, with a combined fuel consumption figure around 50-60 mpg (miles per gallon), depending on driving conditions. Emissions: CO2 (123g/km) - an environmentally friendly option within its class. This car is supplied with the optional Tech Pack which includes Satellite Navigation and Heated Seats. Standard features include Navigation, Heated Front Seats, Cruise Control & much more..

Length:	3885mm
Width:	1695mm
Height:	1510mm
Seats:	5
Gross Weight:	1470KG
Max. Loading Weight:	465KG

PERFORMANCE & ECONOMY

Every Approved used & nearly new car we retail has passed numerous checks and tests, to give you peace of mind when you buy. The servicing and vehicle history is confirmed in Verification that it has never been written-off or stolen, * Status on sale. Thorough & accurate Multi-point inspections expertly carried out by one of our fully trained technicians.

Fuel Consum. (Urban Cold):	41.5MPG
Fuel Consum. (Extra Urban):	62.8MPG
Fuel Consum. (Combined):	52.3MPG
Fuel Tank Capacity:	42L
Number Of Gears:	6 SPEED
Top Speed:	109MPH
Acceleration 0-100 km/h:	11.7s
Engine Power BHP:	99.2BHP

Charles Hurst has been serving Northern Ireland for over 100 years. We offer a wide range of award-winning car manufacturers, providing you with an exceptional used cars, currently for sale. Our exceptional standards ensure you receive a reliable service when you purchase with us, ensuring peace of mind when you drive away with us. We care about our customers and want to ensure that the price you see is the price you pay. Our transparent pricing policy simply means, honest, straightforward pricing offering our vehicles at the best price possible, ensuring no hagglng or hassle for you."

Vehicle Features

2 speed front wipers + intermittent wipe, 3 point rear seatbelts x3, 6 speakers, 12V Accessory socket, 15" Selena 10 spoke alloy wheels, 60/40 split folding rear seat, ABS+EBD+Brake assist, Air Conditioning, Alloy Wheels, Anti-

lock Braking System, Auxiliary input socket, Bluetooth system, Body colour heated door mirrors, Boot light, Chrome rear garnish, Clean air filter, Cloth upholstery, Collapsible pedal support, Colour keyed bumpers, Colour keyed door handles, Cruise control, Curtain airbags, Door open warning, Driver's glovebox with lid, Driver/passenger vanity mirrors with covers, Driver and passenger airbags, Driver seat height adjust, Drivers knee airbag, Dual zone climate control, Dusk sensitive headlamps, Electrically adjustable door mirrors, Electric front windows, Electric pack A - Transporter, Electric rear windows, Engine immobiliser, External temperature gauge, Follow me home headlights, Front cupholders x 2, Front fog lights, Front map reading lights, Front seats with lumbar support, Front side airbags, Fuel indicator with low level warning, Green tinted glass, Headlamp levelling, Heated rear windscreen, Height adjustable front seatbelts with pre-tensioners and load limiters, Height adjustable rear seat head restraints (x3), Interior silver door handles, Isofix system on outer rear seats, Leather gear knob, Leather steering wheel, LED rear lights, Lights on warning, Passenger airbag deactivate switch, Radio/CD + MP3, Rain sensitive windscreen wipers, Rear child proof door locks, Rear cupholder, Rear view camera, Rear wiper, Remote central locking, Remote fuel flap release, Removable rear parcel shelf, Seatbelt warning lamp and buzzer, Speed limiter, Speed sensitive power steering, Steering wheel mounted audio controls, Tachometer, Tilt/telescopic steering column, Touch screen audio system, Trip computer, Tyre repair kit, USB connection, Vehicle stability control VSC + traction control, Ventilated front disc brakes, Ventilated glovebox with light