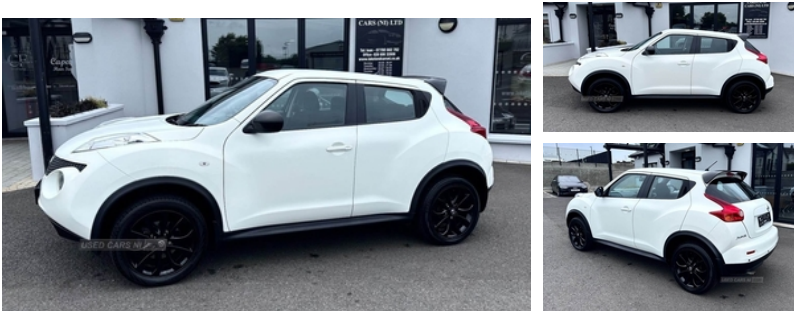


Nissan Juke 1.6 [94] Visia 5dr | Apr 2013

ABSOLUTELY IMMACULATE EXAMPLE! FULL SERVICE HISTORY

£5,295



ABSOLUTELY IMMACULATE EXAMPLE! Comes complete with Full owners manual, Full service history, Full electrics, 2 Keys, AC, Side steps and all the usual Visia refinements. All our vehicles are fully serviced, warranted and prepared to the highest standards. Excellent part ex and finance examples are available on request. Contact one of our sales team for more information

Vehicle Features

2 speed wipers+variable intermittent wipe, 4 speakers, 12V socket, 16" alloy wheels, 60/40 split folding rear seat, ABS + EBD + EBA, Air conditioning, Anti-lock Braking System + EBD + EBA, Aux input, Body colour bumpers, Body colour door mirrors and handles, Body coloured bumpers, Body coloured door mirrors and handles, Casual cloth upholstery, Child locks on rear doors, Chrome exhaust finish, Driver and passenger airbags, Driver and passenger side airbags, Electric door mirrors, Electric front/rear windows, Electric speed sensitive power steering, ESP + traction control, Front and rear curtain airbags, Front cupholders x 2, Front door pockets with bottle holders, Front head restraints, Front seat belt pre-tensioners with load limiters, Glovebox, Grey centre console, Height adjustable driver's seat, Height adjustable front seatbelts, Illuminated footwell, Immobiliser, Isofix child seat preparation, Luggage area under floor storage box, Map reading lamp, Passenger airbag deactivate switch, Passenger seat back pocket, Rear headrests, Rear tonneau cover integrated into tailgate, Rear wiper, Remote central locking, Service interval indicator, Sports seats, Steering wheel rake adjustment, Stereo radio/CD player and MP3 facility, Three 3 point rear seatbelts, Trip computer

Miles:	76000
Fuel Type:	PETROL
Transmission:	Manual
Colour:	White
Engine Size:	1598
CO2 Emission:	138
Tax Band:	E (£190 p/a)
Body Style:	Sport utility vehicle
Insurance group:	12E
Reg:	FRZ8309

Technical Specs

DIMENSIONS	
Length:	4135mm
Width:	1765mm
Height:	1565mm
Seats:	5
Luggage Capacity (Seats Up):	251L
Gross Weight:	1605KG
Max. Loading Weight:	443KG

PERFORMANCE & ECONOMY	
Fuel Consum. (Urban Cold):	37.2MPG
Fuel Consum. (Extra Urban):	56.5MPG
Fuel Consum. (Combined):	47.1MPG
Fuel Tank Capacity:	46L
Number Of Gears:	5 SPEED
Top Speed:	104MPH
Acceleration 0-100 km/h:	12s
Engine Power BHP:	92.5BHP

