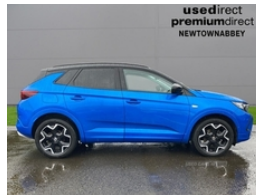


## Vauxhall Grandland 1.5 Turbo D Ultimate 5Dr Auto | Dec 2022

# £20,999

### HEATED STEERING WHEEL & SEATS



Presenting our 2018 Vauxhall Grandland 1.5 Turbo D Ultimate 5dr Auto, with just 26,377 miles on the clock. This stylish and spacious SUV offers a comfortable ride with plenty of features, including a responsive automatic transmission, efficient diesel engine, and high-end Ultimate trim. Ideal for families or those who appreciate a mix of practicality and luxury, this vehicle is perfect for both urban commutes and longer road trips

### Vehicle Features

2 coat hooks, 2nd Row ISOFIX child seat mountings, 3 bench rear seats in 2nd row, 3 spoke flat bottom leather steering wheel with satin chrome effect bezel, 4 way electric driver lumbar support, 4 way passenger electric lumbar support, 12" colour digital cluster, 12v plug in front console and 12v plug in boot, 19" diamond cut bi-colour alloy wheel, 60/40 split folding rear seat with centre rear seat armrest and load through facility, Advanced predictive logic control system using a sun sensor, Air Conditioning, Alarm, Alcantara upholstery, Alloy effect front and rear skid plates, Alloy sports pedals, Alloy Wheels, Ambient centre console downlighter, Anti-lock Braking System, Anti-lock braking system (ABS), Anti-roll bars, Apple carplay/Android auto, Auto lights, Automatic air direction and fan speed with manual override, Automatically dimming anti dazzle rear view mirror, Automatic emergency braking with pedestrian detection, Automatic lighting control, average speed and fuel economy, backrest adjustment and seat cushion extension, Black door mirrors, Black door panels with black premium leather effect inserts, Black roof, Black side window trim, bluetooth audio streaming/mobile phone portal, Bluetooth Music Streaming, Body colour door handles, Body colour lower front and rear

<b>Miles:</b>	26377
<b>Fuel Type:</b>	Diesel
<b>Transmission:</b>	Automatic
<b>Colour:</b>	Blue
<b>Engine Size:</b>	1499
<b>Tax Band:</b>	Petrol/Diesel (£190 p/a)
<b>Body Style:</b>	Hatchback
<b>Insurance group:</b>	16E
<b>Reg:</b>	BYZ7832

### Technical Specs

DIMENSIONS	
<b>Length:</b>	4477mm
<b>Width:</b>	1906mm
<b>Height:</b>	Not Availablemm
<b>Seats:</b>	5
<b>Luggage Capacity (Seats Up):</b>	514L
<b>Gross Weight:</b>	2000KG
PERFORMANCE & ECONOMY	
<b>Fuel Consum. (Combined):</b>	57.7MPG
<b>Fuel Tank Capacity:</b>	53L
<b>Number Of Gears:</b>	8 SPEED
<b>Top Speed:</b>	119MPH
<b>Engine Power BHP:</b>	128.7BHP

bumpers, Body colour upper front bumper, Central fascia display with digital clock, Charcoal filter, Child proof locks on rear doors, Chrome effect interior door handles, Collapsible windscreen wipers, Compatible With Apple Carplay or Android Auto, Compound crank rear suspension with coil springs and gas pressure dampers, Covered storage compartment in centre console and in driver armrest, CSC - Cornering stability control, Dark tinted Rear side and tailgate windows, Dax decor fascia panel with palladium medium finish, Deactivation switch for front passenger front and side impact airbags, Deflation detection system, Digital fuel gauge with low fuel level warning light, Digital rev counter, Digital water temperature gauge with warning light, Door to door illumination, Driver's centre armrest, Driver airbag, Driver drowsiness alert system, Driver information - Total mileage, Drivers and front passengers seat with height, Dual seatbelt pretensioners on front seats, Dual zone electronic climate control, EBD - Electronic brakeforce distribution, Electrically operated front and rear windows with safety auto reverse and one touch up/down facility, Electronically protected audio equipment, Electronic parking brake, Electronic stability program (ESP) including traction control, Engine deadlock immobiliser, Ergonomic active drivers sports style seat, Ergonomic active front passenger sports style seat, Forward collision alert, Front and rear parking distance sensors with 360 degree rear view camera and advanced park assist, Front brake ventilated disc 304mm diameter, Front door pockets with 2.6 litre capacity, Front passenger airbag, Front seat back storage pockets, front seat passenger and outer rear seat passengers, Front seat side impact airbags, Front wiper system spraying directly from wipers, Full size curtain airbags for driver, Fully carpeted luggage area, Gearshift up/down indication light, Hazard warning lights, HBA (Hydraulic Brake Assist), Heated rear screen with timed cut off, Heated Seats, Heated steering wheel, Heated windscreen, Height adjustable headrests, High beam assist, High gloss black Griffin for Vizor and tailgate with high gloss black Grandland tailgate lettering, High gloss black roof rails, High level centre rear brake light, Highway integration assist (Lane positioning assistant and Adaptive cruise control), Hill start assist, Illuminated driver/passenger sunvisors with vanity mirror, Illuminated luggage area, Independent decoupled MacPherson strut front suspension with gas pressure dampers and coil springs, Inertia reel lap and diagonal seatbelts for all seats, instantaneous fuel economy and driving time, IntelliLux adaptive LED pixel headlights and LED tail lights, Intermittent rear window wash/wipe, iPod Connection, Isofix Mounting Points, ISOFIX on front passenger and rear outer seats, Keyless entry and start, Lane departure warning system, Lane keep assist, LED daytime running lights, LED front fog lights, LED Headlights,

Lights on audible warning, Load limiters on outer seat seatbelt retractors, Locking wheel nuts, Luggage compartment cover, Magic wash, Manual headlight beam levelling, Multi function trip computer - Trip odometer, Multimedia navi pro with 10" colour touch+ sat nav+AM/FM/DAB radio, oil life, outside air temperature and audio information, Parking Sensors, Power operated tailgate with foot sensor, Power Steering, Pretensioners on outer rear seatbelt retractors, protective wheel arches and lower door cladding, Rain sensor windscreen wipers, reach, Reach + rake adjustable steering column, Rear brake ventilated disc 268mm diameter, Rear centre seat head restraint, Rear door pockets with 1.8 litre capacity, Rear passenger compartment heating ducts, Rear reading lights, Rear side wing doors, Rear spoiler, Remote control central locking activation switch on driver door, Remote security alarm system, Reversing light, service indicator, Shark fin aerial, Side blind spot alert, Silver effect protective front and rear skid plate, Six speaker - four front + two rear, Smart seatbelt reminder for front and rear seats, Soundproof insulated windscreen, Speed sensitive electric power assisted steering, Speed sign recognition, Split Folding Rear Seats, Steering wheel mounted audio/phone/cruise controls, tilt, Tinted windows, Twin electrically adjustable and heated power door mirrors (wide-angle on drivers side) with automatic timed cut-off, Two drinks holders in centre console, Two speed windscreen wipers with variable intermittent wipe, Tyre inflation kit, Tyre pressure monitoring system, Upper and lower bumper design, USB, Vauxhall connect including Emergency call (SOS e-call) and Breakdown call (b-call), vehicle range, Vizor front grille, Welcome lighting, Winter pack - Grandland, Wireless charger for mobile devices