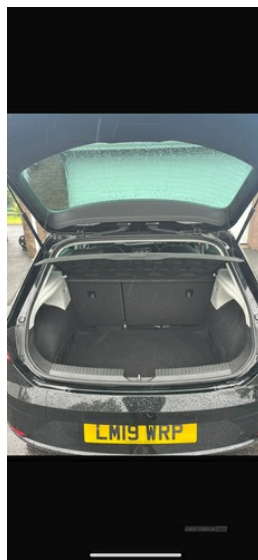


Seat Leon 1.6 TDI SE Dynamic [EZ] 5dr | Mar 2019

£7,400

EXCELLENT CONDITION



Miles:	97452
Fuel Type:	Diesel
Transmission:	Manual
Colour:	Black
Engine Size:	1598
CO2 Emission:	111
Tax Band:	Petrol/Diesel (£190 p/a)
Body Style:	Hatchback
Reg:	Lm19wrp

Technical Specs

DIMENSIONS	
Length:	4282mm
Width:	1816mm
Height:	1459mm
Seats:	5
Luggage Capacity (Seats Up):	380L
Gross Weight:	1870KG
Max. Loading Weight:	634KG

Vehicle Features

'Lights On' warning buzzer, 1 knee, 2 curtain, 2 folding remote keys with window open/close and boot opening function, 2 front side, 2 X SD card slot, 3 point rear seatbelts x3, 3D map display, 4 USB, 7 airbags - 2 front, 8 speakers, 8" touch screen, 12v power point in centre console, 17" Dynamic alloy wheels 30/3, 60/40 split folding rear seat with armrest, ABS + TCS, Active front headrests and 3 rear headrests, Additional heating and ventilation outlet in rear of centre console, Air conditioning, Apple Car Play, Auxiliary input socket, Black radiator grille, Bluetooth audio streaming, Bluetooth Handsfree Phone Connection, Body colour door handles, Body coloured bumpers, Body coloured exterior mirrors with integrated LED indicators, Boot storage net, Cargo rings in boot, CD player, Central locking fuel filler cap, Child proof door locks, Chrome-plated radiator grille surround, Chrome interior detailing, Comfort suspension,

PERFORMANCE & ECONOMY	
Fuel Consum. (Urban Cold):	58.9MPG
Fuel Consum. (Extra Urban):	72.4MPG
Fuel Consum. (Combined):	67.3MPG
Fuel Tank Capacity:	50L
Number Of Gears:	5 SPEED
Top Speed:	122MPH
Acceleration 0-100 km/h:	9.8s
Engine Power BHP:	114BHP

DAB Digital radio, Dark tinted rear windows, Driver and passenger seat height adjust, Driver seat lumbar adjustment, Dust/pollen filter, Electrically adjustable door mirrors, Electric front/rear windows, Electric handbrake, Electro-mechanical power steering, Electronic parking brake with auto hold, Engine immobiliser, ESC with tyre pressure warning indicator, ESP+EBA, Front/rear floor mats, Front adjustable head restraints, Front and rear parking sensors, Front armrest with storage box, Front assist with pedestrian protection, Front comfort seats in Tresil cloth, Front cupholders x 2, Front fog lights with cornering function, Front seatback storage pockets, Front seatbelt pretensioners, Front seatbelt reminder, Full Link Smartphone Integration with Mirror Link, Gear shift indicator, Google Android Auto, Halogen headlights with small LED daytime running lights, Heated door mirrors, Height/reach adjust steering wheel, Hidden exhaust pipe, High centre console with integrated box & cup holder, High gloss black finish B and C pillars, High resolution colour driver display, Hill hold control, Instrument lighting with brightness control, Leather steering wheel and gear knob, Locking wheel bolts, Low fuel warning light, Luggage tie-down hooks, Media system plus (incl. media system colour), Multi-Collision braking, Navigation system (incl. media system plus), Outside temperature gauge, Passenger airbag deactivation system, rear air outlet, Rear top tether child seat ISOFIX attachment, Rear wash/wipe, Remote central locking + deadlocks, RPM counter, SEAT logo boot release, SEAT USB media cable, Service interval indicator, Steering wheel mounted audio/phone controls, Storage box under drivers seat, Trip computer, Voice recognition, Volumetric alarm with back up horn, with armrest in front seats, XDS electronic differential lock